

The Manchester Citizen



YOUR OFFICIAL TOWNSHIP RESOURCE

FROM THE MAYOR

Dear Manchester Township Residents,

As the weather gets warmer and the days grow longer, I am thrilled to connect with you through this Spring 2024 edition of the Manchester Citizen.

This magazine is available at no cost, thanks to the support of local advertisers. Inside, you'll find detailed information about the wide array of services offered by our departments, as well as a lineup of events we have planned for the upcoming months. Whether you're interested in exploring our parks, participating in community events, or supporting local businesses, there's something for everyone to enjoy.



Mayor Robert S. Arace

Additionally, I encourage you to visit our website, www.ManchesterTwp.com, regularly. It's your go-to resource for information on Town Council meetings, municipal updates, and community events. From road closures to volunteer opportunities, staying informed has never been easier.

Thank you for your continued engagement and support. Your participation is key to our community's growth and prosperity. I look forward to seeing you all out enjoying the spring season in our wonderful community. Together, let's make Manchester Township a place we are all proud to call home.

Warm regards,

Robert S. Arace
Mayor of Manchester

Inside This Issue

- Who's Who in Town Hall2
- Other Agencies.....2
- 9th Legislative District3
- Calendar of Events4
- Tax Assessor's Office5
- Bureau of Fire Protection.....6
- From the Clerk's Office8
- Senior Services.....9
- Tax Collector's Office.....9
- Police Department.....11
- Department of Public Works..... 12-19



MANCHESTER TOWNSHIP, NJ

1 COLONIAL DRIVE, MANCHESTER, NJ 08759 • 732-657-8121 • www.ManchesterTwp.com

WHO'S WHO IN TOWN HALL

Mayor , ext. 3105	Robert S. Arace	Tax Assessor , ext. 3700	Martin Lynch
Council , ext. 3203	Roxanne Conniff	Inspection, Land Use & Planning , ext. 3919	Gary Sylvester, Director
Council , ext. 3203	James Vaccaro	Construction Official , ext. 3919	Michael Martin
Council , ext. 3203	Craig Wallis	Chief of Police , ext. 4100	Antonio Ellis
Council , ext. 3203	Joseph Hankins	Emergency Management , ext. 4901	Robert Sharry
Council , ext. 3203	Michele Zolezi	Senior & Social Services , ext. 5001	Melissa DePalma
Business Administrator , ext. 3105	Carl Block	Municipal Court Judge , ext. 3407	Daniel Sahin
Public Works and Utilities , ext. 3300	Albert Yodakis, Director	Municipal Court Administrator , ext. 3405	Tracy Barcus
Recreation , ext. 5102	Tracey Lynch, Director	Personnel Division , ext. 3010	Tamara Goble
Finance , ext. 3600	Diane Lapp, Director	Purchasing Division , ext. 3500	Sean Canning
Clerk/Registrar , ext. 3200	Teri Giercyk		
Tax Collector , ext. 3802	Andrea Gaskill		

OTHER AGENCIES

Emergency Police/Fire /Ambulance.....	911	County Clerk	732-929-2018
Non -Emergency call	732-657-6111	Salvation Army.....	732-270-8393
Deborah Hospital.....	609-6611	Consumer Affairs Department.....	732-929-2105
Ocean University Medical Ct (Brick)	732-840-2200	Catholic Charities	732-350-4120
Community Medical Ct.....	800-266-2278	Rental Assistance Program	732-55-0818
Dial-A-Ride.....	732-350-2900	Nursing Home Complaint Hotline	800-792-9770
Ocean Ride.....	732-736-8989	Lifeline Utility Bill Support.....	800-633-4227
Manchester Senior Outreach Transportation	732-849-8305	PADD.....	800-792-9745
Ocean County Veterans Reservation Ride.....	732-929-2096		
Comcast Cable (Xfinity).....	800-266-2278		
Social Security Administration	800-772-1213		
Ocean County Surrogate Court.....	732-929-2011		
County Connection (ocean county mall)	732-288-7777		
Ocean county Senior Services.....	732-929-2091		
Ocean County Meals on Wheels	848-228-9900		
Manchester Senior Outreach	732-849-8305		
JCP&L	800-662-3115		
N.J Natural GasCo. 609-221-0051/Gas Leaks:.....	800-427-5325		
Manchester Town Hall.....	732-657-8121		
Manchester water/Sewer	732-914-1200		
Manchester Recreation.....	732-657-8121 ext 5102		
Ocean County Library (main branch).....	732-349-6200		
Manchester Branch (ocean county Library).....	732-657-7600		
Manchester Animal Control	732-657-8121ext 4606		
Recycling	732-657-8121ext330		
Manchester Tax Assessor	732-646-8121ext3802		
Manchester/Lakehurst Post Office.....	732-657-8562		
Whiting Post Office.....	732-350-5817		
Toms River Post Office	732-349-0710		
Ocean County Board of Elections.....	732-929-2167		
Veteran Services	732-929-2096		
Emergency Managemen.....	732-657-8121ext4901		
Poison control.....	800-222-1222		
NJ DMV.....	609-2926500		
Construction Official.....	732-657-8121ext3919		
Ocean County Sheriff.....	732-929-2044		

N.J. STATE 9TH DISTRICT LEGISLATIVE OFFICE

609-693-6700

Senator Carmen F Amato
Assembly Brian E. Rumpf
Assemblyman Greg E. Myhre

FEDERAL REPRESENTATIVES

Congressman Christopher Smith.....	732-350-2300
405 Route 539 (Pinehurst Road), Plumsted, NJ 08533	
U.S. Senator, Robert Menendez	973-645-3030
210 Hudson St., Harborside 3, Suite 1000, Jersey City, NJ 07311	
U.S. Senator, Cory A. Booker	856-338-8922
1 Port Center, 2 Riverside DR. Suite 505, Camden, NJ 08101	

OCEAN COUNTY COMMISSIONERS

732-929-2005

Washington Street, Admin. Building
P.O. Box 2191, Toms River, NJ 08754

Commissioner Bobbi Jo Crea
Commissioner Gary Quinn
Commissioner Frank sadegi
Commissioner Virginia Haines
Commissioner John Kelly

AMATO, RUMPF & MYHRE PLEDGE STEADFAST COMMITMENT TO CONSTITUENT SERVICES

Members comprising the newly formed 9th Legislative District Delegation announced that providing effective constituent services will be among their top priorities as members of the State Legislature.

Senator Carmen F. Amato, Jr., Assemblyman Brian Rumpf and Assemblyman Greg Myhre are encouraging constituents to consider the new Delegation as an active resource for assistance with State-related matters including, but not limited to, property tax relief programs, veterans' services, E-ZPass issues as well as unemployment and temporary disability cases.

"During my tenure as Mayor of Berkeley Township, I made it a priority to be accessible to my constituents," said Senator Amato. "This positioned me to be more effective in addressing residents' issues and allocating the Township's resources accordingly while always prioritizing keeping property taxes under control. With that same approach to governance, our legislative delegation will welcome feedback from those we have the privilege of representing, which includes being responsive to requests for assistance with State programs and services."

Assemblyman Rumpf went on to add "The 9th Legislative District has historically been home to large numbers of seniors and veterans who, collectively, are enrolled in various State programs and in certain cases require consistent access to State-offered services. For these individuals as well as all of our constituents, we fully intend to work to resolve issues that our

constituents have encountered that involve State agencies whether it be the New Jersey Division of Taxation, E-ZPass, or the New Jersey Department of Labor. Issues related to the relatively newly established ANCHOR Program have only underscored the need for State legislators to have effective constituent services, especially where tax relief is concerned."



"We want to emphasize that our Delegation welcomes feedback from constituents wanting to voice their opinions on specific legislation or State policies," said Assemblyman Myhre. "To be effective, our respective voting records must accurately reflect the views held by our constituents. For too long, residents in our area of the state have felt that the controlling interests in Trenton do not share their priorities or principles in how to

govern fairly, sensibly and transparently. High taxes and a rigged school funding formula are two prime examples of government mismanagement which infuriate residents of the Garden State. In working to reform these failed policies, we will start with being a receptive and responsive Delegation that actively engages with our constituents. This will be consistent with the overall approach that I and my 9th district colleges have taken in our respective tenures in public service to promote good government that embraces common sense policy making."

Residents of Manchester who have any issues regarding the State of New Jersey, can contact the delegation by Email: SenAmato@njleg.org or by Phone: 609-693-6700.



Thank You to the Businesses

The township would like to thank the businesses that appear in this newsletter and recognizes each of them as contributors to our community. Thanks to their advertising support, this newsletter has been produced at no charge to our residents.



**Kathleen
Pascocello**


Cell: 732-330-9339
Office: 732-370-4664

kpascocello@gmail.com
www.kathypascocellorealtor.com



Setting the Standard in Real Estate Excellence

Bringing 22 years of expertise as a seasoned REALTOR Associate, I am dedicated to serving Ocean County's active adult community with distinction. Whether you're selling, buying, or building, trust in my comprehensive knowledge and specialized expertise to navigate every aspect of your real estate journey. Let's collaborate to position your property strategically for a successful sale or to find your ideal home in our vibrant communities.

 [Kathy.pascocello.realtor](https://www.instagram.com/kathy.pascocello.realtor)

 Ocean County Real Estate Expert - Kathy Pascocello

Weichert
REALTORS



MANCHESTER TOWNSHIP

Calendar of Events

Saturday, May 25th

HARRY WRIGHT LAKE OPENS

Open on weekends only until June 29th
Then open 7 days a week until Sept. 2nd
10:00 am-6:00 pm



Monday, May 27th

MEMORIAL DAY CEREMONY

Grand Army Memorial, Pine Lake Park
10:00 am

Thursday, June 20th

“SOUTH PACIFIC”

Surflight Theatre, Beach Haven, NJ
\$103.00/ea. (Bus/Lunch @ The Waterfront/Show)
Bus leaves from Soccer Field parking lot @ 10:15 a.m.
Lunch @ 11:00 a.m. - Showtime is 2:00 p.m.

Saturday, June 29th

MANCHESTER DAY

Harry Wright Lake
2pm Start
Saturday, June 29th
6:00 p.m. - “Kickin’ Wing”
7:00 p.m. - “KBrown Express”
Fireworks at Dusk

SUMMER CONCERT SERIES

Harry Wright Lake
6:00 pm Start

Wednesday, July 10th

6:00 p.m. - Joey Scarangelo “The Wedding Singer”
7:30 p.m. - “The British Invasion Years”

Wednesday, July 31st

6:00 p.m. - “Jukebox Legends”
7:30 p.m. - “Sensational Soul Cruisers”

Wednesday, August 7th

6:00 p.m. - “Stiletto and the Saxman”
7:30 p.m. - “The Cameos”

Wednesday, August 21st

6:00 p.m. - “Julian & Dominique”
7:30 p.m. - “Mission Dance”

Friday, August 9th

“A NIGHT IN PARADISE”

Harry Wright Lake
7:00 pm

Tuesday, September 10th

“STARDUST ROAD”

Surflight Theatre, Beach Haven, NJ
\$103.00/ea. (Bus/Lunch @ Calloway’s Show)
Bus leaves from Soccer Field parking lot @ 10:15 a.m.
Lunch @ 11:00 a.m. - Showtime is 2:00 p.m.



Wednesday, September 11th

SEPTEMBER 11TH CEREMONY

Manchester Town Hall
10:00 a.m.

Friday, September 13th

MOVIES AT THE LAKE

“The Super Mario Bros. Movie”

Pine Lake
7:30 p.m.

Tuesday, October 8th

“ONE SLIGHT HITCH”

Hunterdon Hills Playhouse, West Hampton, NJ
\$124.00/ea. (Bus/Lunch/Show)
Bus leaves from Soccer Field parking lot @ 9:15 a.m.
Lunch @ 11:00 a.m. - Followed by Show

October Date TBA

HALLOWEEN

TRICK OR TRUNK

Manchester High School
7:00 p.m. - 9:00 p.m.



November 11th

VETERANS DAY CEREMONY

Manchester Town Hall
11:00 a.m.

Tuesday, November 19th

“A PLAYHOUSE CHRISTMAS 2024”

Hunterdon Hills Playhouse, West Hampton, NJ
\$128.00/ea. (Bus/Lunch/Show)
Bus leaves from Soccer Field parking lot @ 9:15 a.m.
Lunch @ 11:00 a.m. - Followed by Show

DECEMBER DATES TBA

Time TBD

MENORAH LIGHTING - Manchester Town Hall

Saturday, December 7, 2024

CHRISTMAS IN THE PINES - Harry Wright Lake
2:00 p.m.

TAX ASSESSOR'S OFFICE

Township Reassessment

After several months of preparation the reassessment of Manchester Township is under way. A letter by the Tax Assessor, Martin Lynch was mailed on January 2nd to each property owner informing them of the start of the reassessment process.

The Ocean County Board of Taxation approved the township to conduct a revaluation in November of 2023 to be completed for tax year 2025. The difference between a revaluation and a reassessment is that a reassessment is completed by the municipal Tax Assessor and a revaluation is completed by an outside firm, usually at a much higher cost. Reassessment is the process of appraising all real estate in a municipality according to its full and fair value. The process is revenue neutral, meaning the purpose is not to raise property taxes. The purpose is to ensure that the property tax assessments are fair and equitable. The last reassessment in the township was in 2020. According to New Jersey Division of Taxation records, the average township property is assessed at only 64.93% of its market value for tax year 2024.

Mr. Lynch has already held many informational meetings throughout the Township for residents to obtain additional information concerning the reassessment process and to answer any related questions. Additional information can be obtained on the Township website at www.manchestertwp.com.

The inspection of the township's 17,000 homes will be conducted in 2024 per the following schedule. The property inspector will be taking a front and rear photograph of each house, physically inspecting the interior, and measuring the exterior of each property. For your protection, each property inspector will have photographic identification. Please be sure to confirm that they are a Township representative and do not permit anyone who is unable to properly identify themselves to enter your property. If a resident is not home on the inspector's visit, a notice will be left asking the resident to call the office to arrange an appointment. Some of the data that the inspector will be collecting is the design, style, overall condition, plumbing, heat source, air conditioning and basement. The data collected and anything else believed to have an influence on property values will be utilized to determine each property's full and fair value.

Area	Approximate Date of Inspections	Area	Approximate Date of Inspections
PINE LAKE PARK	FEBRUARY - SEPTEMBER 2024	COUNTRY WALK	FEBRUARY - APRIL 2024
RICHARD ESTATES	FEBRUARY 2024	WHITING STATION	MARCH - MAY 2024
OAK KNOLL	FEBRUARY 2024	ROUTE 70 & BECKERVILLE	MAY 2024
SAVANNAH ACRES	APRIL 2024	CRESTWOOD VILLAGE 5	APRIL - AUGUST 2024
RIDGECREEK	APRIL 2024	CRESTWOOD VILLAGE 7	APRIL - AUGUST 2024
LEISURE RIDGE	FEBRUARY 2024	MEADOWS AT LAKE RIDGE	MAY - JUNE 2024
AUTUMN RIDGE	FEBRUARY 2024	RESERVE OF LAKE RIDGE	JULY - AUGUST 2024
RIVER POINTE	FEBRUARY - MARCH 2024	CRESTWOOD VILLAGE 6	JUNE - AUGUST 2024
SUMMIT PARK	MARCH 2024	WOODLANDS AT VENUE	AUGUST - SEPTEMBER 2024
LEISURE VILLAGE WEST	FEBRUARY - JUNE 2024	WHITING	MAY - JUNE 2024
LEISURE KNOLL	MARCH-MAY 2024	WHITING TERRACE	MAY - JUNE 2024
GREEN ACRES - HOLLY OAKS	MARCH - APRIL 2024	PASADENA	SEPTEMBER 2024
RIDGEWAY AREA	APRIL - MAY 2024	FOX HOLLOW	JUNE - SEPTEMBER 2024
RENAISSANCE	JUNE-SEPTEMBER 2024	ROOSEVELT CITY	JUNE - SEPTEMBER 2024

Recent sales of comparable homes are analyzed and used to value all of the homes in the Township. The notice of the new assessed values for each property will be mailed between December of 2024 and January of 2025. Residents will be given the opportunity to arrange for an informal review of the new assessments if they have any questions or concerns after they receive the notice. The impact of the new assessments will not affect the property owner's tax bill until the 2025 tax year.

A reassessment does not necessarily mean an increase in taxes for every homeowner. The tax rate will go down to compensate for the increase in the assessed values. Since not all properties have appreciated in value at the same rate, some tax bills will go up, some will stay the same and others will go down.

If any resident should have a question or concern related to the reassessment, they should contact the Tax Assessor's office at 732-657-8121.

Manchester Township Bureau of Fire Prevention



The Manchester Township Bureau of Fire Prevention is working in coordination with the National Fire Protection Association (NFPA) to raise awareness about the risks associated with lithium-ion batteries and ways to minimize them. NFPA's new campaign, "Charge into Fire Safety™", includes an expanded series of resources, guidelines, and information in response to the concerns fire officials have about the growing number of fires caused by lithium-ion batteries that power micromobility devices such as e-bikes and e-scooters, smaller electronics such as cell phones and laptops, and electric vehicles. As the use of these items has increased in recent years, so, too, has the number of fires associated with them.

"Lithium-ion batteries are increasingly found in the many devices and systems we use every day," said Lorraine Carli, vice president of Outreach and Advocacy at N FPA. "With this greater use, however, we are seeing an uptick in related fires, prompting people to contact us frequently with questions about battery safety. In response, N FPA created the 'Charge into Fire Safety' campaign with information that helps answer these questions clearly and thoroughly, in one easy-to-find location."

The Manchester Township Fire Prevention Bureau recommends these tips when buying, charging, storing, and using lithium-ion batteries to help prevent fires:

- Only purchase and use devices, batteries, and charging equipment that are listed by a nationally recognized testing lab and labeled accordingly.
- Use charging equipment that is only compatible with your device. To be safe, use only the charging equipment that is supplied with your device.
- Do not keep charging the device or device battery after it is fully charged.
- Do not put lithium-ion batteries in the trash. Recycling is always the best option. Take the batteries to a battery recycling location or contact your local waste department for disposal instructions.
- Stop using your device if the battery shows signs of damage, such as an unusual odor, excessive heat, popping sounds, swelling, or change in color.
- Only have device repairs performed by a qualified professional.

The Manchester Township Fire Prevention Bureau encourages residents to learn more about the hazards of lithium-ion batteries and understanding how lithium-ion battery fires start, people can take the necessary steps to minimize associated risks and safely use their electronics and other devices powered by these batteries.

ADK will help you SELL your HOME for More...*Faster!*

Our experienced agents specialize in Adult Community sales and live in neighboring communities. ADK is a local, independent company that works hard to gain a better understanding of your individual NEEDS, provide you with better ADVICE, and help you set realistic GOALS.

At ADK we understand your needs & will meet your Expectations!

Get The Attention You Deserve & The Results You Want.....

Don't Delay Call ADK!

CALL FOR A COMPLIMENTARY MARKET ANALYSIS AND HOME STAGING CONSULTATION



JoAnn Petrizzo
Owner/Broker



2009-2022



732-255-4433

1071 Rt 37 West & Bananier

Located in the Favorites OTB Shopping Center across from CVS

www.adkrealtynj.com



Lithium-Ion Battery Safety



Signs of a Problem

Stop using the battery if you notice these problems: odor, change in color, too much heat, change in shape, leaking, or odd noises. If it is safe to do so, move the device away from anything that can catch fire. Call 9-1-1.

Battery Disposal

- Do not put lithium-ion batteries in the trash.
- Recycling is always the best option.
- Take them to a battery recycling location or contact your community for disposal instruction.
- Do not put discarded batteries in piles.

Lithium-ion batteries supply power to many kinds of devices including smart phones, laptops, e-scooters and e-bikes, e-cigarettes, smoke alarms, toys, and even cars. If not used correctly, or if damaged, these batteries can catch on fire or explode.

The problem

- These batteries store a large amount of energy in a small amount of space.
- Sometimes batteries are not used the right way; batteries not designed for a specific use can be dangerous.
- Like any product, a small number of these batteries are defective. They can overheat, catch fire, or explode.

Safety Tips

- Purchase and use devices that are listed by a qualified testing laboratory.
- Always follow the manufacturer's instructions.
- Only use the battery that is designed for the device.
- Put batteries in the device the right way.
- Only use the charging cord that came with the device.
- Do not charge a device under your pillow, on your bed, or on a couch.
- Do not keep charging the device or device battery after it is fully charged.
- Keep batteries at room temperature when possible. Do not charge them at temperatures below 32°F (0°C) or above 105°F (40°C).
- Store batteries away from anything that can catch fire.



NATIONAL FIRE PROTECTION ASSOCIATION

The leading information and knowledge resource on fire, electrical and related hazards

nfpa.org/education ©NFPA 2022

BUY LIKE A BUILDER®

ALL FLOORS

AMERICAN FLOORING

DIRECT

DESIGNER FLOORS - WHOLESALE PRICES

516 E. Bay Ave. Manahawkin 609 - 597 - 7551

www.AmericanCarpet1.com

Call for a Free Estimate LIC# 13VH00147400

Carmona ~ Bolen

Home for Funerals, LLC



VETERAN & FIRST RESPONDER DISCOUNTS OFFERED

"Let Our Home Be Your Home"

Family Owned & Operated

Traditional Funerals

Cremations and Memorials

Please call us to inquire about our affordable cremation packages!

Two Convenient Locations To Serve You

Toms River



Whiting



412 Main Street
Toms River, NJ 08753
(732) 349-1922

Michael J. Defonzo Jr.,
Manager
N.J. Lic #4075

66 Lacey Road
Whiting, NJ 08759
(732) 350-0003

www.carmonabolenfh.com

From The Clerk's Office



FREE RABIES CLINIC

Saturday, June 1, 2024

Ridgeway Firehouse
2848 Route 571, Manchester
Cats: 8:30-9:00 a.m.
Dogs: 9:00-11:00 a.m.

Whiting Volunteer Fire Company
Route 530 and Cherry Street
Cats: 1:00-1:30 p.m.
Dogs: 1:30-3:00 p.m.

IMPORTANT NOTICE! *Bring proof of previous vaccination to the rabies clinic so a three (3) year certificate may be issued. If proof is not provided, the certificate will be issued for one year only.*

It's Hot Out!

Don't Leave Your Pet in the Car!



A car can overheat **even** when the window has been left cracked an inch or two.



Young, overweight or elderly animals, or those with short muzzles or thick or dark-colored coats are **most** at risk for overheating.



Shady spots offer **little** protection on hot days, and move with the sun.



Even if the temperature outside is only 70°, the inside of your car may be as much as 20 degrees hotter!

On an 85° day, it only takes ten minutes for the inside of your car to reach 102°.

Within just 30 minutes, the car's interior can climb from 85° to a scorching 120°.

If you see an animal trapped in a car on a hot day, try to locate the owner or call 911! Stay by the car until assistance arrives.

PIZZERIA



We Deliver!

732.323.0500

1900 Route 70
Manchester, NJ008759



Full Menu Online!

TOMS RIVER BREWING

Tap Room & Brewery

16 unique beers on tap.
Draft, Crowlers,
Growlers, and 4-Packs.



1540 RT 37W TOMS RIVER, NJ - TOMSRIVERBREWING.COM

Manchester Township Senior Services

Manchester Township Senior Services offers Information & Assistance to senior residents 60 years of age or older or persons on disability. All calls made to Manchester Senior Services can provide you with information about programs on local, county and state level. An outreach coordinator can assist you in applying for benefits. The information may help you to make the best decision for your particular needs. Medical and Non-Medical transportation is available on a first come, first served basis. We offer a Senior Socialization Program as well, call the number below to find out more!

NOW AT 2 LOCATIONS

1 Colonial Drive, Manchester (Monday – Friday)

*82 Lacey Rd, Whiting
(Tuesday, Wednesday, Thursday ONLY)*

Call today: 732-849-8305

Tax Collector's Office

- Taxes are due 2/1, 5/1, 8/1 and 11/1 with a 10-day grace period.
- Water and Sewer are due in the office by 2/15, 5/15, 8/15, and 11/15.
- For questions regarding the tax freeze program with the State of New Jersey please call 1-800-882-6597.
- For questions regarding the Anchor program with the State of New Jersey please call 1-800-323-4400.
- If you are a veteran or widow of a veteran, please contact 732-657-8121 ext. 3700 on how to apply for a veteran's deduction.
- For residents over 65 or disabled with an income less than \$10,000 not including social security, please contact 732-657-8121 ext. 3700 on how to apply for a senior deduction.
- We offer automatic withdrawal from you checking or savings account to pay taxes, water, and sewer with no charge to residents. Please contact 732-657-8121 ext. 3700 or stop in to fill out the application.



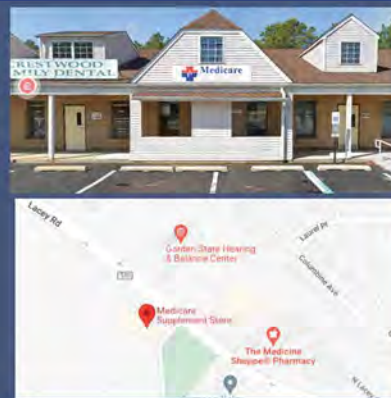
**New to Medicare?
Need to review your plan?
Want to know what's new?**



**FOR APPOINTMENTS CALL
(732) 252-8828**

www.MedicareSuppStore.com

This is an advertisement for insurance. By responding to the ad, you will be put in contact with a licensed insurance agent offering Medicare Advantage Plans, Medicare Supplement Plans, and Prescription Drug Plans. Not affiliated with or endorsed by any government agency.



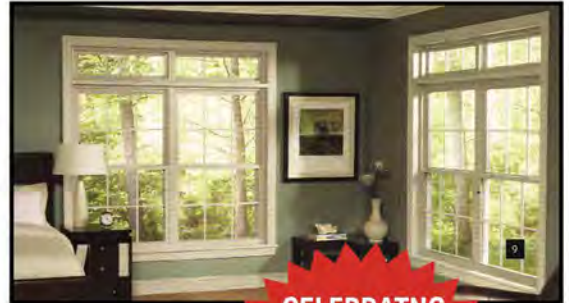
**Visit our store to learn about
the 2024 Medicare Plans.**

**70 Lacey Road, Suite 7
Whiting, NJ 08759**

SUNROOMS, SCREEN ROOMS & DECKS



- **WINDOWS • DOORS**
- **SCREEN ROOMS**
- **PATIO ENCLOSURES**
- **SIDING • ROOFING • DECKS**
- **RAILINGS • AND MORE!!!**



Built Rite WINDOWS

CELEBRATING
OUR
40TH
YEAR!

Owned and Operated
by a Veteran!
"All our products are MADE IN AMERICA"

CALL NOW FOR FREE ESTIMATE

732-270-4433

1591 RT. 37 WEST | TOMS RIVER
TAKE JUG HANDLE AT NORTH HAMPTON

SINCE 1979 FAMILY OWNED A+ RATED BY BBB

license number: #I3VH00722500

Manchester Township Police Department



Upon assuming the office of Chief of Police in 2021, one of Chief Robert Dolan's goals was to foster increased engagement with the community, forming enduring relationships between Manchester Township's residents and police officers. After finding success with police departments across the country, Chief Dolan instituted Coffee with a Cop and Pizza with Police events here in Manchester Township.

"Our Coffee with a Cop and Pizza with Police events allow our officers to connect with members of the community as regular people," said Chief Dolan. "Oftentimes, we interact with our residents during difficult and highly stressful circumstances. With these events, our officers can get to know our residents, answer their questions, and address any concerns in a relaxed and informal setting."

These social events are regularly held on the east and west ends of Manchester Township, alternating locations as to encourage as many residents as possible to visit with our officers. Currently, Officer Jordan Weed is coordinating upcoming events, which previously have been held in varied locations including Manchester ShopRite, Whiting Shop and Shop, The Barn, and Dunkin Donuts, among others.

Coffee with a Cop events serve as invaluable bridges between law enforcement and the community, fostering crucial relationships and trust. These gatherings provide an informal setting where community members can engage with police officers, discuss concerns, and build mutual understanding. Community policing emphasizes collaborative efforts to address local issues, enhance safety, and prevent crime.

At these events, members of various Manchester Township Police Department sections are available to answer questions, including the Patrol Division, Investigations Bureau, and Traffic Safety Section. Members of the Command Staff, including Chief Dolan, are in attendance to greet residents and are regularly joined by Mayor Robert Arace and members of the Township Council. Community members not only gain insight into law enforcement practices but also contribute to crime prevention strategies, making their neighborhoods safer and more resilient.

"These events are a bright spot for our officers, as forming bonds with the community helps us to do our jobs better," said Chief Dolan. "Interacting with police officers in a casual setting like Coffee with a Cop not only humanizes law enforcement but also empowers individuals to play an active role in shaping their community's safety and well-being."

Coffee with a Cop events are typically held during the morning, while Pizza with the Police events are scheduled during the evening hours. We encourage all residents to stop by one of these community events for some quality conversation and refreshments.

Follow our Manchester Police social media platforms and website for announcements regarding the next Coffee with a Cop and Pizza with Police events:

Facebook: @manchesterpolice
Instagram: @manchesterpolicenj
Website: www.manchesterpolicenj.com



DEPARTMENT OF PUBLIC WORKS

NO MORE THAN 8 CUBIC YARDS OF BULK WASTE ITEMS WILL BE COLLECTED FROM ANY SINGLE RESIDENCE DURING ANY ONE SCHEDULED COLLECTION. (APPROXIMATELY 5-FEET WIDE BY 4-FEET HIGH BY 10-FEET LONG)

PLEASE NOTE RULES:

BULK PICK-UP: Large items such as furniture, doors, cabinets, mattresses and other large items will be picked up on your scheduled date. Windows, mirrors and other pane glass must be **TAPED** before they are put out for pick-up, or they **will not** be picked up. Broken pane glass (not bottles) must be placed in a separate reusable, **not cardboard**, container marked "Broken Glass." Please stack computers, TVs, stereos, DVDs & video players, etc. (all electronics with cords) separately curbside. As of January 2011 these items are banned from the landfill and must be recycled. These items can also be brought to the Whiting Recycling Center.



LEAF PICK-UP: Leaves and pine needles must be raked to the curb in a single row, no earlier than 2 days prior to the scheduled pick up. Leaves will be vacuumed up utilizing large equipment and a clear path is required. All vehicles should be parked away from leaf rows to expedite the process. Leaves mixed with any brush or debris **will not** be picked up. Brush and garden waste, clippings and other vegetative waste must be placed in a separate container. Branches must be tied into manageable bundles, less than 4-ft. long and under 50 lbs., with a max. branch diameter of 3-inches. Loose & unmanageable branches and waste **will not** be picked up.

WHITE GOODS/APPLIANCES & METAL ITEMS: Large household appliances such as washers, dryers, refrigerators, stoves & dishwashers as well as lawnmowers, bicycles & other large metal items, or items containing a significant amount of metal will be picked up on your Bulk Pick-Up dates. USEPA regulations require that freon be removed from such appliances as refrigerators, air conditioners & freezers before pick-up & disposal. Residents must contact a certified contractor to remove the freon from the appliance. **A Certificate of Freon Removal must be placed on the unit before it can be picked up.**

CONSTRUCTION DEBRIS/BUILDING MATERIALS: Drywall, shingles, plaster, untreated railroad ties, plywood, lumber, paneling, insulation, siding & porcelain fixtures will not be picked up at your home. It is requested that residents use a Private Container Service for home renovations. Small amounts of debris may be taken to the Whiting Recycling Center. Disposal of any debris generated by a building contractor is the sole responsibility of the contractor. Residents who are contractors **CANNOT** place their business waste & debris curbside during Bulk Pick-Up, nor can they bring it to the Whiting Recycling Center.

TIRES, HAZARDOUS WASTE: (Anti-Freeze, Paint, Thinners, Solvents, Chemicals, Asbestos, Household Cleaners, etc.) concrete, tree stumps, grass clippings, rocks and large branches **will not** be picked up and are not accepted at the Whiting Recycling Center. For disposal of these items, contact the OCEAN COUNTY NORTHERN RECYCLING CENTER at 732-367-0802. Automobile batteries may be taken to the Whiting Recycling Center.

USED MOTOR OIL **will not** be picked up. It should be taken to the Whiting Recycling Center on Rt. 70 in Whiting as long as the oil does not contain gas, water or antifreeze. Motor oil **must** be checked in by an employee.

BRUSH & GARDEN WASTE will be picked up on your scheduled **Leaf & Brush Pick-Up Dates**. No logs, stumps, grass clippings, bushes or trees with roots or debris from land clearing will be picked up.

CARPETING will be picked up provided it is cut up in 4-foot lengths, rolled and tied, and weighing not more than 50 pounds. Wet carpeting will not be picked up; it is the resident's responsibility to make sure that carpeting is not put out in the rain.

SEE WHAT MATTERS MOST



Experience top-tier eye care and cutting-edge services tailored to your individual needs from SightMD's New Jersey team of expert ophthalmologists.



CATARACT SURGERY



OPTOMETRY SERVICES



GLAUCOMA TREATMENT



COMPREHENSIVE OPHTHALMOLOGY

📍 550 County Rd 530 #19, Whiting, NJ 08759



(877) 296-4144

Community Medical Center | RWJ Barnabas HEALTH

Comprehensive Breast Center

We are dedicated to saving lives through breast cancer prevention and early detection.



368 Lakehurst Road, Suite 102
Toms River, NJ 08755
732-557-3363

770 Lighthouse Drive, Suite 118A
Barnegat, NJ 08005
848-208-6203

Finding a Physician You Can Trust


CONNOLLY DERMATOLOGY

Specializing in general, surgical, pediatric, adult and cosmetic dermatology, Connolly Dermatology offers quality dermatological care for the whole family at offices conveniently located throughout NJ, DE and PA.



Dr. Coyle S. Connolly, D.O.

Our Whiting office is located at
108 LACEY ROAD, SUITE 38A, WHITING NJ 08759
(609) 926-8899 | ConnollyDermatology.com



Ocean Cardiovascular Specialists

MURAT KARATEPE, MD, FACC
ASU RUSTEMLI, MD, FACC

*Invasive and Noninvasive Cardiology
Board Certified in Cardiology & Nuclear Cardiology*

Echocardiography | Carotid Ultrasound
Holter Monitoring | Stress Testing

25 Mule Road, Suite B2 | Toms River, NJ 08755
Tel: 732.505.9005 | Fax: 732.505.9919

www.oceancardiovascular.com

**RENOVATE YOUR BATHROOM IN AS
LITTLE AS 1 DAY!**

732-812-0843

WHY US?

- ✓ **4.7 GOOGLE RATING**
- ✓ **LOCAL EXPERTS IN OCEAN COUNTY**
- ✓ **CERTIFIED CONTRACTORS**
- ✓ **FREE DESIGN CONSULTATION**
- ✓ **OVER 100 DESIGN OPTIONS**

**NO PAYMENTS
UNTIL 2025**

HASSLE FREE

**FINANCING
AVAILABLE**



SCAN ME

TEXT US



WEBSITE



BATHROOMPROSNJ.COM

**367 Brick Blvd,
Brick Township**

BATHROOM|PROS

**1545 Route 37,
Toms River NJ**

PLEASE NOTE RULES: *continued from page 12*

MOTORIZED VEHICLES such as dirt bikes, jet skis, scooters, boat motors & boats of any type **will not** be picked up and will not be accepted at the Whiting Recycling Center.

PROPANE TANKS **will not** be picked up and are not accepted at the Whiting Recycling Center.

STICKERS can be obtained at Town Hall, Room 103 or at the Public Works Garage on Rte. 70 in Whiting, by providing driver's license & vehicle registration showing a Manchester address. (New residents need to provide proof of residency such as a phone, cable, electric or gas bill. We DO NOT accept water or tax bills)

Residents of Manchester Township are permitted to bring household waste to the Ocean County Landfill on Rte. 70. Household waste, recyclables & bulk can be brought to the Whiting Recycling Center, provided you have a Township issued sticker on your vehicle. Stickers are issued only to people who reside in the Township. Landfill permits are not issued to landlords or property owners who do not reside in Manchester Township. Landfill permits will not be issued for commercial vehicles. Upon entry of the recycling center in Whiting, a valid Manchester driver's license must be presented to the booth attendant.

For more information, contact the Department of Public Works: 732-657-8121 x3300

2024 MANCHESTER BULK & LEAF PICK-UP SCHEDULE

NO MORE THAN 8 CUBIC YARDS OF BULK WASTE ITEMS WILL BE COLLECTED FROM ANY SINGLE RESIDENCE DURING ANY ONE SCHEDULED COLLECTION. (APPROXIMATELY 5-FEET WIDE BY 4-FEET HIGH BY 10-FEET LONG)

Zone 1 & Reserve @ Lake Ridge

All of Whiting, beginning at the border of Lakehurst, west of Rte 70, all of Beckerville, Roosevelt City, Fox Hollow, Timber Green, Woods @ Whiting, the Pasadena Area & Woodlands

Bulk pick-up dates: February 6 & August 29

Leaf & brush pick-up dates: April 23 & Nov 14

Zone 2b

Holly Oaks & Wilbur Avenue

Bulk pick-up dates: February 15 & September 10

Leaf & brush pick-up dates: May 9 & Dec 2

Leisure Village West

Bulk pick-up dates: February 26 & September 19

Zone 2a & River Pointe

Whitney, Richard & Clearstream Estates, Ridgeway Acres, Quarry Rd, Ridgeway Blvd, Single Family Homes-Ridgeway Area, Ridgeway Mobile Home Park, Rolling Meadows, Johnson, Richmond & Washington Aves., Autumn Ridge & Brentwood

Bulk pick-up dates: February 8 & September 3

Leaf & brush pick-up dates: April 25 & Nov 19

Zone 3a

All Single Family Homes On Or Off Rte 571 From Rte 527, Up To Maplewood & Fairfield St. Includes Alberta, Lockhart, Seminole, Midway, Lake, Wellington Pl. & Lawrence Pl Oak Knoll & Riverwood Ct.

Bulk pick-up dates: February 13 & September 5

Leaf & brush pick-up dates: April 30 & Nov 21

BULK ITEMS MAY BE PUT OUT FOR PICK-UP NO EARLIER THAN 2-DAYS BEFORE YOUR SCHEDULED PICK-UP DATE & MUST BE CURBSIDE NO LATER THAN 6:30AM ON THIS DATE. ONCE YOUR HOME HAS BEEN PASSED, THERE WILL BE NO RETURN FOR PICK-UPS.

2024 MANCHESTER BULK & LEAF PICK-UP SCHEDULE

Zone 3b

All Single Family Homes In Savannah Acres And Summit Park Including All Single Family Homes On Route 37, Ridgecreek, Pine Acres Manor, Commonwealth Woods & Karen Ct.

Bulk pick-up dates: February 20 & September 12
Leaf & brush pick-up dates: May 14 & Dec 4

Zone 4a

Pine Lake Park, 1st Ave. To The South Side Of Commonwealth, Gladstone Thru Manchester St. Including All Dead End Streets Off Manchester St.

Bulk pick-up dates: March 7 & October 1
Leaf & brush pick-up dates: May 22 & Dec 16

Zone 4b

North Side Of Commonwealth Blvd To Riverside & All Dead End Sts. Off Manchester St.

Bulk pick-up dates: March 11 & October 7
Leaf & brush pick-up dates: May 28 & Dec 19

Crestwood Village 1

Bulk pick-up dates: January 2 & July 25
Leaf & brush pick-up dates: March 19 & Oct 10

Crestwood Village 2

Bulk pick-up dates: January 4 & July 30
Leaf & brush pick-up dates: March 21 & Oct 15

Crestwood Village 3

Bulk pick-up dates: January 9 & August 1
Leaf & brush pick-up dates: March 26 & Oct 17

Crestwood Village 4

Bulk pick-up dates: January 11 & August 6
Leaf & brush pick-up dates: March 28 & Oct 22

Crestwood Village 5

Bulk pick-up dates: January 16 & August 8
Leaf & brush pick-up dates: April 2 & Oct 24

Crestwood Village 6

Bulk pick-up dates: January 18 & August 13
Leaf & brush pick-up dates: April 4 & Oct 29

Crestwood Village 7

Bulk pick-up dates: January 23 & August 15
Leaf & brush pick-up dates: Apr 9 & Oct 31

Cedar Glen Homes & Renaissance

Bulk pick-up dates: February 29 & September 24
Leaf & brush pick-up dates: May 16 & Dec 9

Cedar Glen West

Bulk pick-up date: February 22 & September 17
Leaf & brush pick-up dates: May 7 & Nov 27

Cedar Glen Lakes

Bulk pick-up dates: January 30 & August 22
Leaf & brush pick-up dates: April 16 & Nov 7

Pine Ridge & PR South

Bulk pick-up dates: February 1 & August 27
Leaf & brush pick-up dates: April 18 & Nov 12

Whiting Station, The Meadows & Country Walk

Bulk pick-up dates: January 25 & August 20
Leaf & brush pick-up dates: April 11 & Nov 5

Leisure Ridge

Bulk pick-up dates: February 22 & September 17
Leaf & brush pick-up dates: May 2 & Nov 25

Leisure Knoll

Bulk pick-up dates: March 5 & September 26
Leaf & brush pick-up dates: May 20 & Dec 11

The Township will provide a **SPECIAL PICK-UP of BULK ITEMS** for the Death of a Homeowner (within 90 days), or if a resident is moving out of the Township. We do not provide a move “in” pickup service. Special bulk pick-ups must be requested **IN PERSON** by resident or family member only at the Public Works office in Town Hall. Families cannot be represented by a realtor. Proof of Residency must be provided along with a Death Certificate, Contract of Sale or Lease Agreement as conditions require. Realtors, landlords and rubbish removal contractors **will not** be permitted to apply for special pick-ups.

20+
YEARS

Celebrating 20+
years of healthcare
excellence



AristaCare HEALTH SERVICES

Short-Term Subacute Rehabilitation, Memory Care, & Long-Term Care.



In times like these, it's good to have
a neighbor you know and trust!

- 5-Star Rated by CMS in Quality Measures
- Newly Renovated State-of-the-Art Facility
- Beautiful and Spacious Rehabilitation Gym
- 24-7 Telehealth Availability
- Specialized Latino & Indian Programs
- Physician-led Cardiac Program
- Orthopedic Physician on Staff
- Full-time Nurse Practitioner on site
- Care Surveillance through Circadia, a remote patient monitoring device.
- Chronic Care Management & Remote Patient Monitoring Through Tapestry Health

*Please call specific center for detailed information as the above list may vary



AristaCare hosts many
community events each month.
Sign up to be added to our
mailing list and be in the know of
all our latest happenings!

 @aristacarehealthservices

 @aristacare_homes

 www.aristacare.com


ARISTA CARE
HEALTH SERVICES

WE ARE THE #1 SINGLE OFFICE FOR WHITING!!

Crossroads is listing and selling more homes for our communities than another other company or franchise. We offer the most honest, ethical agents and they give outstanding customer service.

Thank you for your confidence over all the years!

Call us with any real estate questions, we are here for you and our door is always open!

732-350-1000 or stop in at 480 Route 530! Your Heart of NJ Group



Lori Woytanowski
Broker/Manager
732-874-0764



Noreen Lynch
Realtor® Associate
732-267-2336



Carole Kuiken
Broker Salesperson
732-232-1402



Karen Naedele
Realtor® Associate
973-464-1052



Vincent Maldonado
Realtor® Associate
609-290-6330



Crystle Skinner
Realtor® Associate
732-581-8441



Gerard Fiore
Realtor® Associate
732-966-4197



Elizabeth Kohr
Realtor® Associate
717-269-6720



Susan Kuiken
Realtor® Associate
732-779-7000

 **Crossroads
Realty**

480 Route 530, Whiting, NJ
732-350-1000
www.CrossroadsRealtyNJ.com



2024 Manchester Township Recycling Schedule

MONDAY:

Roosevelt City, Fox Hollow, Beckerville, Timber Green, Crestwood 6, Reserve @ Lake Ridge

Jan. 6-15-29, Feb. 12-26, Mar. 11-25, Apr. 8-22, May 6-20, June 3-17, July 1-15-29, Aug. 12-26, Sept. 9-23, Oct. 7-21, Nov. 4-18, Dec. 2-16-30

Pine Lake Park-East, Southampton to Route 571, Leisure Knoll

Jan. 8-22, Feb. 5-19, Mar. 4-18, Apr. 1-15-29, May 13, June 1-10-24, July 8-22, Aug. 5-19, Sept. 7-16-30, Oct. 14-28, Nov. 11-25, Dec. 9-23

TUESDAY:

Pine Ridge & Pine Ridge South, Country Walk

Jan. 2-16-30, Feb. 13-27, Mar. 12-26, Apr. 9-23, May 7-21, June 4-18, July 2-16-30, Aug. 13-27, Sept. 10-24, Oct. 8-22, Nov. 5-19, Dec. 3-17-31

Pine Lake Park-West of Southampton, Savannah Acres, Pine Acres Manor, Ridge Creek, Summit Park, Commonwealth Woods, Karen Court

Jan. 9-23, Feb. 6-20, Mar. 5-19, Apr. 2-16-30, May 14-28, June 11-25, July 9-23, Aug. 6-20, Sept. 3-17, Oct. 1-15-29, Nov. 12-26, Dec. 10-24

WEDNESDAY:

Homes on Rt. 571 - north of Rt. 70 to Jackson border—Rolling Meadows, Ridgeway Mobile Park, Renaissance, Ridgeway Acres, River Pointe, Cedar Glen West, Wilbur Ave, Holly Oaks, Clearstream Estates, Autumn Ridge Townhomes, Brentwood

Jan. 3-17-31, Feb. 14-28, Mar. 13-27, Apr. 10-24, May 8-22, June 5-19, July 3-17-31, Aug. 14-28, Sept. 11-25, Oct. 9-23, Nov. 6-20, Dec. 4-18

Leisure Village West, homes on Rt. 571 - south of Rt. 70 to Toms River border—Leisure Ridge, Oak Knoll, Cedar Glen Homes, Richard Estates, Whitney Estates

Jan. 10-24, Feb. 7-21, Mar. 6-20, Apr. 3-17, May 1-15-29, June 12-26, July 10-24, Aug. 7-21, Sept. 4-18, Oct. 2-16-30, Nov. 13-27, Dec. 11-28

THURSDAY:

Cedar Glen Lakes, Village Green, Old Whiting, Meadows, Pasedena, The Woods, Woodlands

Jan. 4-18, Feb. 1-15-29, Mar. 14-28, Apr. 11-25, May 9-23, June 6-20, July 6-18, Aug. 1-15-29, Sept. 12-26, Oct. 10-24, Nov. 7-21, Dec. 5-19

Crestwood Villages 2 & 3

Jan. 11-25, Feb. 8-22, Mar. 7-21, Apr. 4-18, May 2-16-30, June 13-27, July 11-25, Aug. 8-22, Sept. 5-19, Oct. 3-17-31, Nov. 14-30, Dec. 12-26

FRIDAY

Crestwood Villages 4 & 5, Schoolhouse Road

Jan. 5-19, Feb. 2-16, Mar. 1-15-29, Apr. 12-26, May 10-24, June 7-21, July 5-19, Aug. 2-16-30, Sept. 13-27, Oct. 11-25, Nov. 8-22, Dec. 6-20

Crestwood Villages 1 & 7, Whiting Station

Jan. 12-26, Feb. 9-23, Mar. 8-22, Apr. 5-19, May 3-17-31, June 14-28, July 12-26, Aug. 9-23, Sept. 6-20, Oct. 4-18, Nov. 1-15-29, Dec. 13-27

IMPORTANT NOTE:

Recyclables put out in plastic garbage bags **WILL NOT** be taken.

Single Stream Recycling:

- All recyclable materials are combined in a reusable container. No larger than 32 gallons.
- Do not sort. **Do not tie or bundle cardboard & newspaper. Do not use plastic bags.**

Acceptable Recyclable Materials:

- Newspaper, mixed paper & brown corrugated cardboard; junk mail, magazines, used writing paper, white envelopes, computer paper, chipboard (tissue or food boxes) & catalogs.
- Commingled bottles, cans & plastics with lids/caps on; plastic bottles, steel & aluminum cans, aluminum foil, food & yogurt containers, & glass bottles.
- *Note - Only recyclable plastic materials with the recycling 1, 2, or 5 symbol on the bottom of container are accepted. See examples at right.



Non-Acceptable Recyclable Materials:

- Plastic bags (shopping bags, food storage bags, etc.), Plastic bowls, plant containers, packaging material, medical waste, dishes, glasses, household batteries, pots & pans.
- Telephone books will not be picked up with your recycling. You may dispose of them at the Whiting Recycling Center located off Route 70 at Sam Pitts Road.
- No shredded paper or styrofoam.!

Do not dispose of syringes and needles in recycling containers or in recyclable bottles and cans.

MANCHESTER RECYCLES - IT'S THE LAW

Recycling services provided by
Interstate Waste Services, Inc.
609-771-8005



United States
Consumer Product Safety Commission

Fireworks Injuries & Deaths

2022 REPORT

#CelebrateSafely

Safety Tips

- ★ Never allow children to play with or ignite fireworks, including sparklers.
- ★ Make sure fireworks are legal in your area before buying or using them.
- ★ Keep a bucket of water or a garden hose handy in case of fire or other mishap.
- ★ Light fireworks one at a time, then move back quickly.
- ★ Never try to re-light or pick up fireworks that have not ignited fully.
- ★ Never use fireworks while impaired by alcohol or drugs.
- ★ More Fireworks Safety Tips: [cpsc.gov/fireworks](https://www.cpsc.gov/fireworks)

Injuries & Deaths



10,200

people were
treated in ERs
for fireworks injuries in 2022

11 Deaths
from Fireworks in 2022



How & When Injuries Occurred

2022 Injuries
by Firework Type



73%

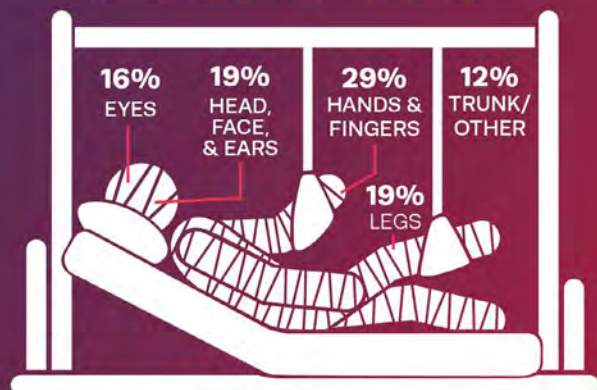
of injuries occurred
in the weeks before &
after the July 4th holiday



Most Injured Body Parts



38% of the injuries were
burns



Source: U.S. Consumer Product Safety
Commission 2022 Fireworks Annual Report



CPSC.gov
USCPC



Everything to thrive

Beacon of LIFE

The independence you want. The care you need.

PACE services

-  **Primary Care**
-  **Social services**
-  **Nutritional guidance**
-  **Physical & Occupational Therapy**
-  **Home & personal care services**
-  **Social Center**
-  **Dental & vision**
-  **Transportation**

ACCEPTS MEDICAID

Enrollment is voluntary and you may disenroll at any time




Scan here


YOU CAN JOIN IF YOU MEET THE FOLLOWING CRITERIA:

- ✓ You are 55+
- ✓ You live in Ocean or Monmouth county
- ✓ You need assistance with basic care needs
- ✓ You are able to live safely in the community with the help of PACE services

 **888-252 3226**

BeaconPace.com
info@Beaconpace.com

 **1075 Stephenson Ave.**
Oceanport, NJ 07757

 **800 Route 70,**
Lakehurst, NJ 08733



Ben Franklin Plumbing, One Hour Heating & Air, and Mister Sparky Electric

Is your local 'one stop shop' for ALL of your home service needs.
One call takes care of it all!



From Plumbing, HVAC, Repairs, Installations, Maintenance, Electric, Remodels & More,
you can depend on our family of home services to do the job RIGHT.
Local, family owned, and backed by trusted national brands –
we treat every family and home, as we do our own.

Call or visit us 24/7 at

732-341-4666/www.benfranklinplumbingoc.com

732-349-7997/www.onehourheatandairoc.com

(732) 204-8120/<https://www.mistersparky.com/ocean-county/>

Ben Franklin Lic #36BI009918 One Hour Lic #19HC004518 Mister Sparky Lic #34EB00529200



This is Where You Belong

When you choose Crestwood Manor, a Life Plan Community, you have the best of all worlds—carefree independent living along with the companionship of community life. We offer all the comfort, security and services you desire, restaurant-style dining, an indoor fitness and aquatic center, events, activities and transportation to your favorite shops, restaurants and entertainment venues.



SIMPLY A WONDERFUL PLACE TO CALL HOME.

CALL TODAY 877-490-2160



50 Lacey Road, Whiting, NJ 08759
A Life Plan Community • crestwoodmanoronline.org



Manchester Township
1 Colonial Drive
Manchester, NJ 08759
732-657-8121

Presort Standard
U.S. Postage
PAID
Permit No. 550
Lehigh Valley, PA



Spring /Summer 2024



This Community Newsletter is produced for
Manchester Township by **Hometown Press**
215.257.1500 • All rights reserved*

To Place An Ad Call Elizabeth Konopacki at 609-209-2277

WILLS ESTATES GUARDIANSHIPS TRUSTS

LAW OFFICES

TAFF, DAVIES & KALWINSKY

ROBERT H. TAFF ~ JOEL A. DAVIES
MATTHEW K. KALWINSKY ~ ZOE M. YAFFE

Serving our clients with dedication, competence and compassion.

143 Route 70 ~ Toms River, NJ 08755 ~ 732-901-5797 ~ fax 732-901-5799

National Academy of Elder Law Attorneys ~ House Calls Upon Request

www.taffanddavies.com

Joel Davies has recently been appointed by Governor Christie to serve
as a member of the "New Jersey Task Force on Abuse of Persons who are Elderly or Disabled."

REAL ESTATE MUNICIPAL COURT TRAFFIC TICKETS ESTATE LITIGATION

The information contained in *The Manchester Citizen* can also be accessed on our website at www.ManchesterTwp.com.