

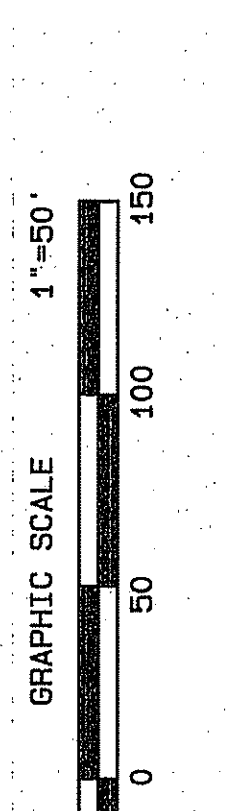
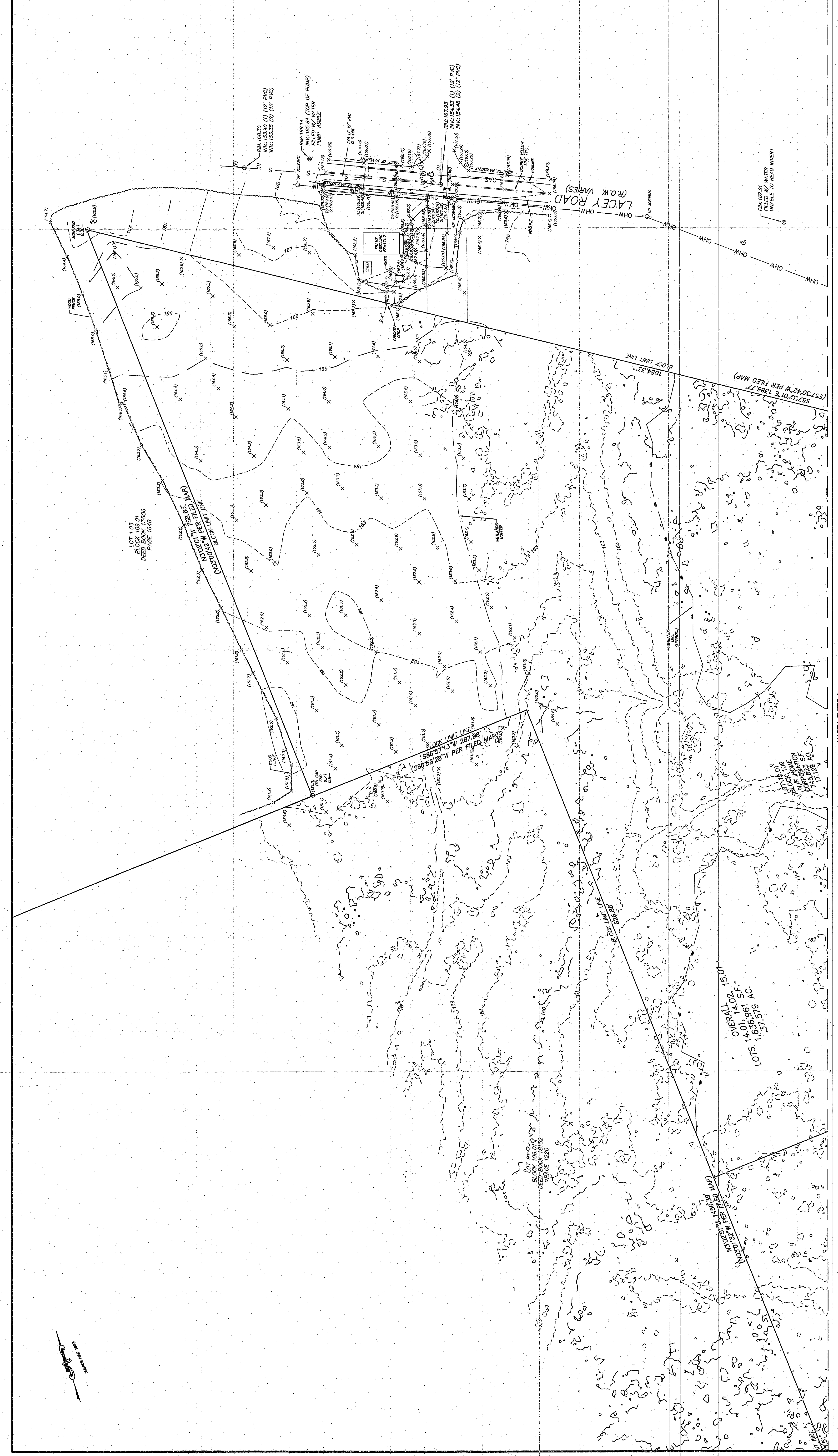
THIS PLAN, SPECIFICATIONS AND NOTES ARE THE PROPERTY OF FWH ASSOCIATES, P.A. AND ARE NOT TO BE REPRODUCED OR TRANSMITTED IN ANY FORM OR BY ANY MEANS, ELECTRONIC OR MECHANICAL, INCLUDING PHOTOCOPYING, RECORDING, OR BY ANY INFORMATION STORAGE AND RETRIEVAL SYSTEM, WITHOUT THE WRITTEN PERMISSION OF FWH ASSOCIATES, P.A.

TOPOGRAPHIC SURVEY DATA SHOWN HEREON IS BASED ON A MEASUREMENT OF 1000 FEET OF SLOPE ON A 1:50 SCALE, WITH A TOTAL STATION TOTAL STATION (TST) OF 1000 FEET ON 03/17/2021.

THESE NOTES ARE TO BE USED IN CONJUNCTION WITH THE SURVEY PLAN AND SPECIFICATIONS. ANY DISCREPANCY BETWEEN THESE NOTES AND THE SURVEY PLAN SHALL BE RESOLVED BY THE SURVEYOR.

- Legend:
- 1. Along the boundary line of Cherry Street, South 89°50'00" West, 257.17 feet to a public traverse.
 - 2. Along the boundary line of Cherry Street, South 89°50'00" West, 257.17 feet to a public traverse.
 - 3. Along the boundary line of Cherry Street, South 89°50'00" West, 257.17 feet to a public traverse.
 - 4. Along the boundary line of Cherry Street, South 89°50'00" West, 257.17 feet to a public traverse.
 - 5. Along the boundary line of Cherry Street, South 89°50'00" West, 257.17 feet to a public traverse.
 - 6. Along the boundary line of Cherry Street, South 89°50'00" West, 257.17 feet to a public traverse.
 - 7. Along the boundary line of Cherry Street, South 89°50'00" West, 257.17 feet to a public traverse.
 - 8. Along the boundary line of Cherry Street, South 89°50'00" West, 257.17 feet to a public traverse.
 - 9. Along the boundary line of Cherry Street, South 89°50'00" West, 257.17 feet to a public traverse.
 - 10. Along the boundary line of Cherry Street, South 89°50'00" West, 257.17 feet to a public traverse.
 - 11. Along the boundary line of Cherry Street, South 89°50'00" West, 257.17 feet to a public traverse.
 - 12. Along the boundary line of Cherry Street, South 89°50'00" West, 257.17 feet to a public traverse.
 - 13. Along the boundary line of Cherry Street, South 89°50'00" West, 257.17 feet to a public traverse.
 - 14. Along the boundary line of Cherry Street, South 89°50'00" West, 257.17 feet to a public traverse.
 - 15. Along the boundary line of Cherry Street, South 89°50'00" West, 257.17 feet to a public traverse.

16. Along the boundary line of Cherry Street, South 89°50'00" West, 257.17 feet to a public traverse.



BOUNDARY & TOPOGRAPHIC SURVEY

CHERRY STREET & LACEY ROAD
LOTS 14.01, 14.02, 15.01, 17

TAX MAP NO. 25
BLOCK 109

MANCHESTER TOWNSHIP, OCEAN COUNTY, NEW JERSEY

FWH ASSOCIATES, P.A.
CIVIL ENGINEERS
LAND SURVEYORS
PLANNERS
LANDSCAPE ARCHITECTS
RESERVE SPECIALISTS
ARCHITECTS

1855 Rt. 9, Toms River, NJ 08755 T: 732.397.3100 F: 732.797.3523

William P. Schemel
PROFESSIONAL LAND SURVEYOR
N.J. LIC. NO. 386276

DATE	REVISION	DRAWN	CHECKED	RELEASED

DATE	10/17/21
SCALE	1"=50'
PROJECT NO.	2021-018
CLIENT	WFS
DATE	12/31/21
SHEET NO.	2

THIS SURVEY WAS CONDUCTED BY FWH ASSOCIATES, P.A. ON 03/17/2021. THE SURVEY WAS PERFORMED BY WILLIAM P. SCHEMEL, LICENSED LAND SURVEYOR, N.J. LIC. NO. 386276. THE SURVEY WAS CONDUCTED IN ACCORDANCE WITH THE STANDARDS AND PRACTICES OF THE PROFESSION OF LAND SURVEYING IN THE STATE OF NEW JERSEY.