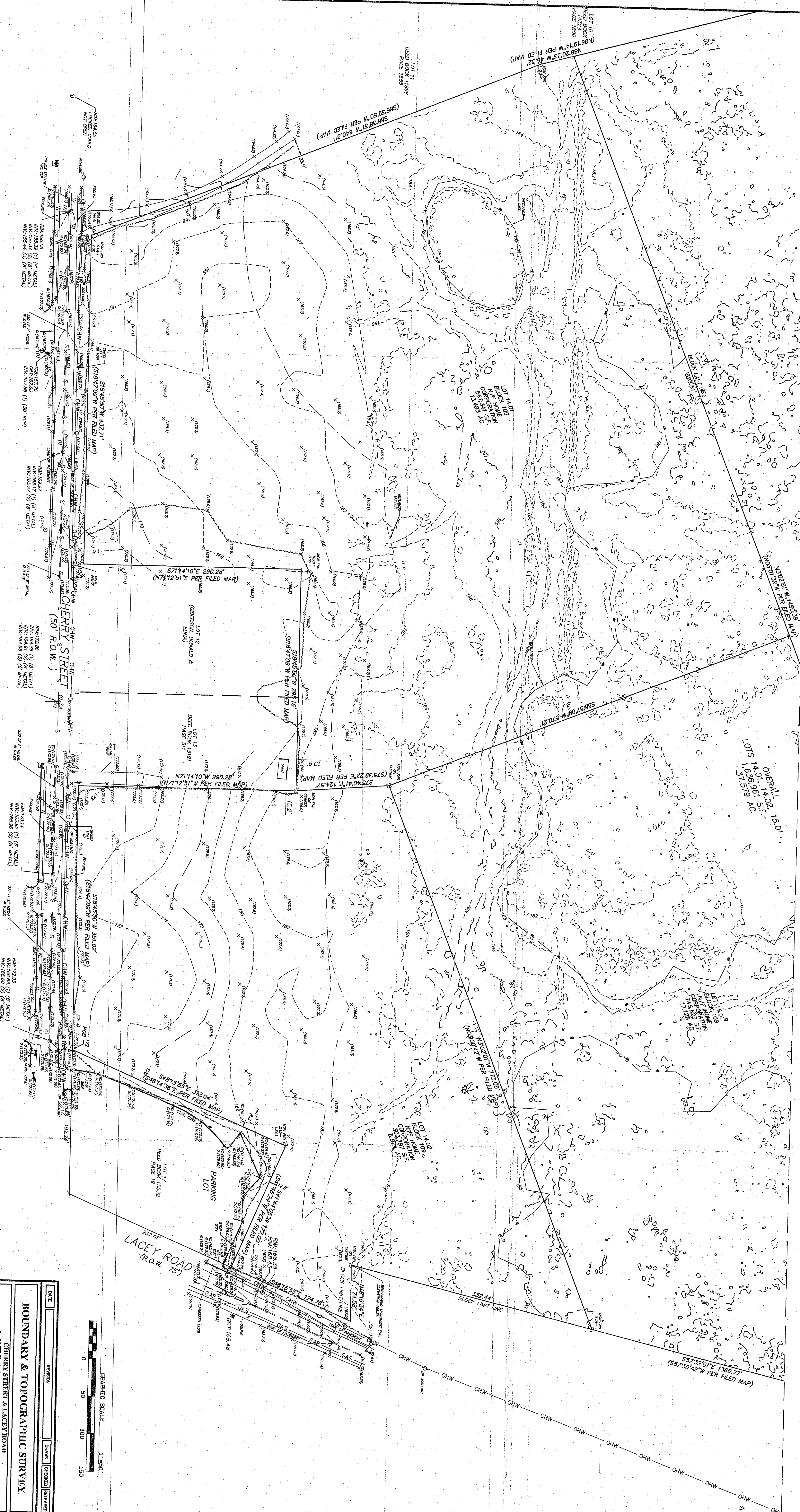




MATCH SHEET 2



NOTICE: This map was prepared by the Surveyor on the basis of the information furnished to him by the owner of the land shown thereon. It is not to be construed as a warranty of the accuracy of the information furnished, nor as a guarantee of the truth of the statements made therein. The Surveyor is not responsible for any errors or omissions in this map, or for any consequences that may result therefrom.

Legend:

- ADJACENT PROPERTY
- ADJACENT LOT
- ADJACENT BLOCK
- ADJACENT DEED
- ADJACENT MAP
- ADJACENT SURVEY
- ADJACENT TOWN
- ADJACENT COUNTY
- ADJACENT STATE
- ADJACENT COUNTRY
- ADJACENT CONTINENT
- ADJACENT UNIVERSE

Notes:

1. The bearings and distances shown on this map were measured by the Surveyor in the field.
2. The bearings and distances shown on this map were calculated by the Surveyor from the field measurements.
3. The bearings and distances shown on this map were calculated by the Surveyor from the field measurements.
4. The bearings and distances shown on this map were calculated by the Surveyor from the field measurements.
5. The bearings and distances shown on this map were calculated by the Surveyor from the field measurements.
6. The bearings and distances shown on this map were calculated by the Surveyor from the field measurements.
7. The bearings and distances shown on this map were calculated by the Surveyor from the field measurements.
8. The bearings and distances shown on this map were calculated by the Surveyor from the field measurements.
9. The bearings and distances shown on this map were calculated by the Surveyor from the field measurements.
10. The bearings and distances shown on this map were calculated by the Surveyor from the field measurements.

Map Information:

Scale: 1" = 50'

Graphic Scale: 0, 50, 100, 150'

North Arrow: True North

Projection: NAD 83

Datum: NAD 83

Units: Feet

Survey Data:

Lot 11: S89°59'31" W 64.05' PER FILED MAP

Lot 12: S89°59'31" W 24.16' PER FILED MAP

Lot 13: S89°59'31" W 31.02' PER FILED MAP

Lot 14: S89°59'31" W 24.16' PER FILED MAP

Lot 15: S89°59'31" W 31.02' PER FILED MAP

Lot 16: S89°59'31" W 24.16' PER FILED MAP

Lot 17: S89°59'31" W 31.02' PER FILED MAP

Lot 18: S89°59'31" W 24.16' PER FILED MAP

Lot 19: S89°59'31" W 31.02' PER FILED MAP

Lot 20: S89°59'31" W 24.16' PER FILED MAP

Lot 21: S89°59'31" W 31.02' PER FILED MAP

Lot 22: S89°59'31" W 24.16' PER FILED MAP

Lot 23: S89°59'31" W 31.02' PER FILED MAP

Lot 24: S89°59'31" W 24.16' PER FILED MAP

Lot 25: S89°59'31" W 31.02' PER FILED MAP

Lot 26: S89°59'31" W 24.16' PER FILED MAP

Lot 27: S89°59'31" W 31.02' PER FILED MAP

Lot 28: S89°59'31" W 24.16' PER FILED MAP

Lot 29: S89°59'31" W 31.02' PER FILED MAP

Lot 30: S89°59'31" W 24.16' PER FILED MAP

Lot 31: S89°59'31" W 31.02' PER FILED MAP

Lot 32: S89°59'31" W 24.16' PER FILED MAP

Lot 33: S89°59'31" W 31.02' PER FILED MAP

Lot 34: S89°59'31" W 24.16' PER FILED MAP

Lot 35: S89°59'31" W 31.02' PER FILED MAP

Lot 36: S89°59'31" W 24.16' PER FILED MAP

Lot 37: S89°59'31" W 31.02' PER FILED MAP

Lot 38: S89°59'31" W 24.16' PER FILED MAP

Lot 39: S89°59'31" W 31.02' PER FILED MAP

Lot 40: S89°59'31" W 24.16' PER FILED MAP

Lot 41: S89°59'31" W 31.02' PER FILED MAP

Lot 42: S89°59'31" W 24.16' PER FILED MAP

Lot 43: S89°59'31" W 31.02' PER FILED MAP

Lot 44: S89°59'31" W 24.16' PER FILED MAP

Lot 45: S89°59'31" W 31.02' PER FILED MAP

Lot 46: S89°59'31" W 24.16' PER FILED MAP

Lot 47: S89°59'31" W 31.02' PER FILED MAP

Lot 48: S89°59'31" W 24.16' PER FILED MAP

Lot 49: S89°59'31" W 31.02' PER FILED MAP

Lot 50: S89°59'31" W 24.16' PER FILED MAP

Lot 51: S89°59'31" W 31.02' PER FILED MAP

Lot 52: S89°59'31" W 24.16' PER FILED MAP

Lot 53: S89°59'31" W 31.02' PER FILED MAP

Lot 54: S89°59'31" W 24.16' PER FILED MAP

Lot 55: S89°59'31" W 31.02' PER FILED MAP

Lot 56: S89°59'31" W 24.16' PER FILED MAP

Lot 57: S89°59'31" W 31.02' PER FILED MAP

Lot 58: S89°59'31" W 24.16' PER FILED MAP

Lot 59: S89°59'31" W 31.02' PER FILED MAP

Lot 60: S89°59'31" W 24.16' PER FILED MAP

Lot 61: S89°59'31" W 31.02' PER FILED MAP

Lot 62: S89°59'31" W 24.16' PER FILED MAP

Lot 63: S89°59'31" W 31.02' PER FILED MAP

Lot 64: S89°59'31" W 24.16' PER FILED MAP

Lot 65: S89°59'31" W 31.02' PER FILED MAP

Lot 66: S89°59'31" W 24.16' PER FILED MAP

Lot 67: S89°59'31" W 31.02' PER FILED MAP

Lot 68: S89°59'31" W 24.16' PER FILED MAP

Lot 69: S89°59'31" W 31.02' PER FILED MAP

Lot 70: S89°59'31" W 24.16' PER FILED MAP

Lot 71: S89°59'31" W 31.02' PER FILED MAP

Lot 72: S89°59'31" W 24.16' PER FILED MAP

Lot 73: S89°59'31" W 31.02' PER FILED MAP

Lot 74: S89°59'31" W 24.16' PER FILED MAP

Lot 75: S89°59'31" W 31.02' PER FILED MAP

Lot 76: S89°59'31" W 24.16' PER FILED MAP

Lot 77: S89°59'31" W 31.02' PER FILED MAP

Lot 78: S89°59'31" W 24.16' PER FILED MAP

Lot 79: S89°59'31" W 31.02' PER FILED MAP

Lot 80: S89°59'31" W 24.16' PER FILED MAP

Lot 81: S89°59'31" W 31.02' PER FILED MAP

Lot 82: S89°59'31" W 24.16' PER FILED MAP

Lot 83: S89°59'31" W 31.02' PER FILED MAP

Lot 84: S89°59'31" W 24.16' PER FILED MAP

Lot 85: S89°59'31" W 31.02' PER FILED MAP

Lot 86: S89°59'31" W 24.16' PER FILED MAP

Lot 87: S89°59'31" W 31.02' PER FILED MAP

Lot 88: S89°59'31" W 24.16' PER FILED MAP

Lot 89: S89°59'31" W 31.02' PER FILED MAP

Lot 90: S89°59'31" W 24.16' PER FILED MAP

Lot 91: S89°59'31" W 31.02' PER FILED MAP

Lot 92: S89°59'31" W 24.16' PER FILED MAP

Lot 93: S89°59'31" W 31.02' PER FILED MAP

Lot 94: S89°59'31" W 24.16' PER FILED MAP

Lot 95: S89°59'31" W 31.02' PER FILED MAP

Lot 96: S89°59'31" W 24.16' PER FILED MAP

Lot 97: S89°59'31" W 31.02' PER FILED MAP

Lot 98: S89°59'31" W 24.16' PER FILED MAP

Lot 99: S89°59'31" W 31.02' PER FILED MAP

Lot 100: S89°59'31" W 24.16' PER FILED MAP

Legend:

- ADJACENT PROPERTY
- ADJACENT LOT
- ADJACENT BLOCK
- ADJACENT DEED
- ADJACENT MAP
- ADJACENT SURVEY
- ADJACENT TOWN
- ADJACENT COUNTY
- ADJACENT STATE
- ADJACENT COUNTRY
- ADJACENT CONTINENT
- ADJACENT UNIVERSE

BOUNDARY & TOPOGRAPHIC SURVEY

CHERRY STREET & LACEY ROAD

LOTS 14.01, 14.02, 15.01, 17

MANCHESTER TOWNSHIP, ORANGE COUNTY, NEW JERSEY

FWH ASSOCIATES, INC.

CIVIL ENGINEERS
LAND SURVEYORS
LANDSCAPE ARCHITECTS
RESERVE SPECIALISTS
ARCHITECTS

1808 Rt. 9, Tomp River, NJ 08753 T: 732.789.2100 F: 732.789.2233
FWHASSOCIATES.COM

William D. Schmel
PROFESSIONAL LAND SURVEYOR
N.J. LIC. NO. 36275

DATE: _____ REVISION: _____ DRAWN: _____ CHECKED: _____ RELEASED: _____

NOV/21 10/1/21
REVISED BY: _____
DRAWN BY: _____
CHECKED BY: _____
DATE: _____