

REVISIONS		
DATE	NAME	NO.
JULY, 1984	G.L. HART	15543
DEC., 1984	G.L. HART	15543
NOV., 1989	FELLOWS, READ & ASSOCIATES	
02-28-93	ARTHUR SWENSON JR., P.L.S.	30753
07-31-06	RICHARD A. MORALLE, P.E., P.L.S.	GB25863
2/17/17	GLEN J. LLOYD, P.L.S. (MASER)	GS37598
2/17/17	GLEN J. LLOYD, P.L.S. (MASER)	GS37598
3/10/17	GLEN J. LLOYD, P.L.S. (MASER)	GS37598
12/30/17	GLEN J. LLOYD, P.L.S. (MASER)	GS37598

SHEET 17

Roosevelt City

SECOND SUBDIVISION
FILED 7/20/1908 MAP No. C-244

Roosevelt City

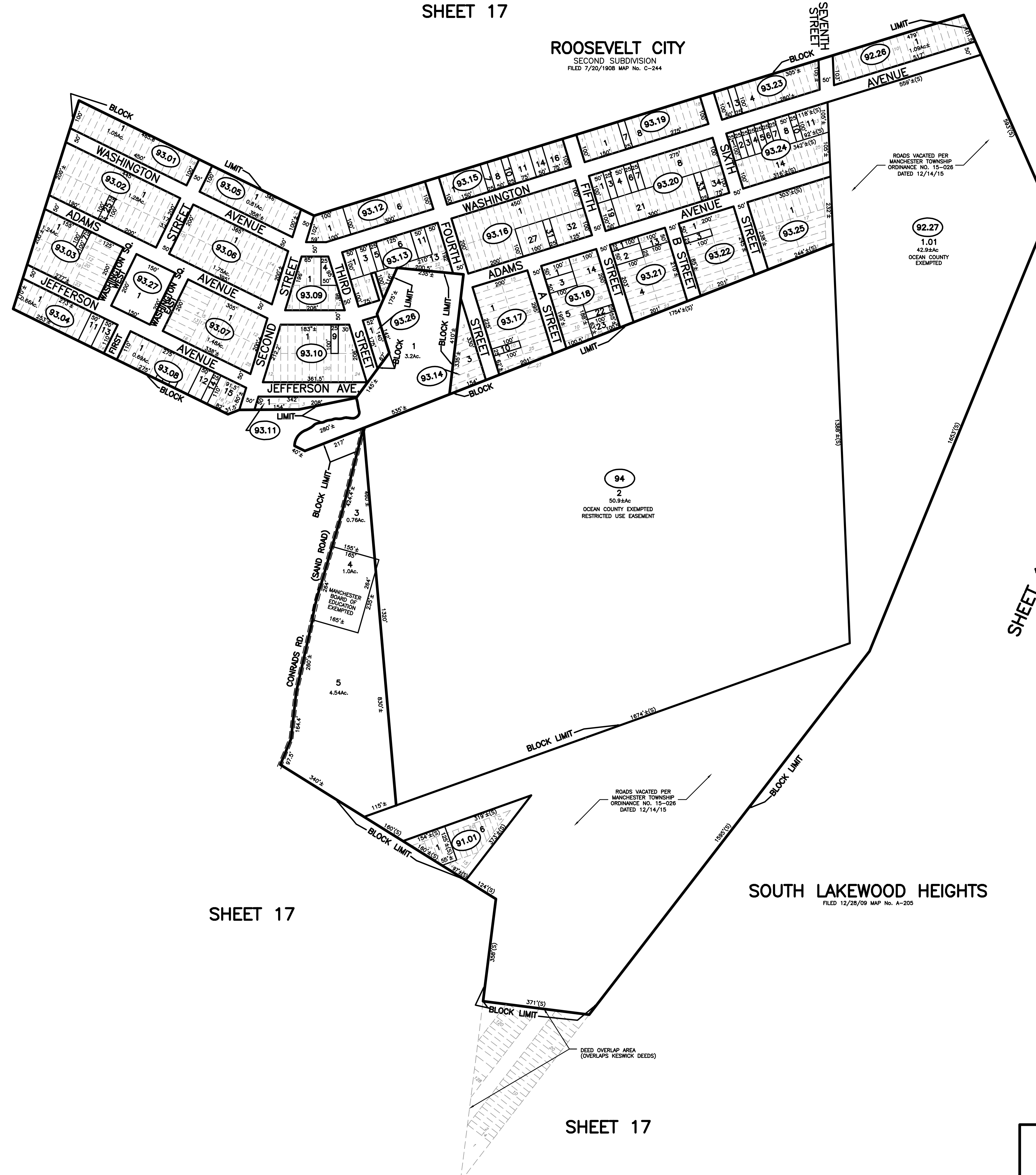
FIRST SUBDIVISION
FILED 11/18/1907 MAP No. A-244

Lakewood Park South

FILED 12/13/09 MAP No. B-201

South Lakewood Heights

FILED 12/28/09 MAP No. A-205

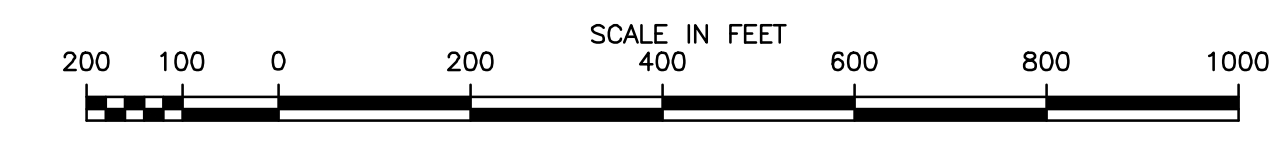
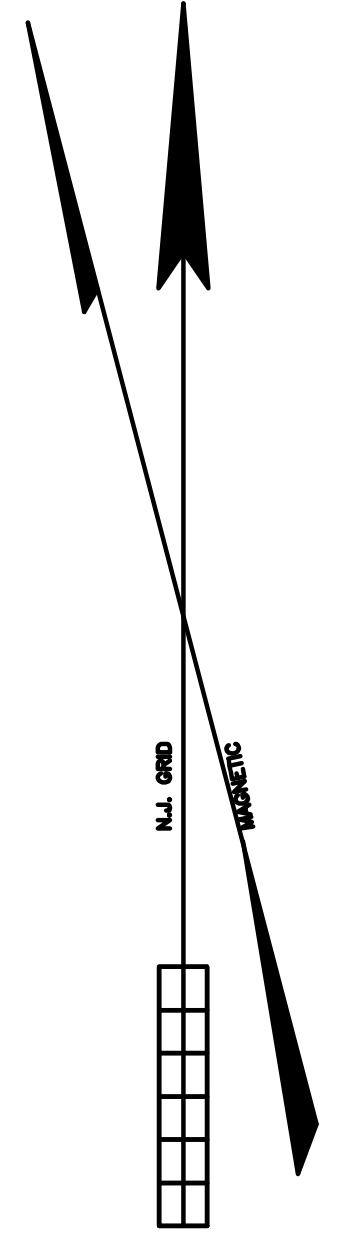


SHEET 17

SHEET 17

SHEET 17

SHEET 17



TAX MAP
MANCHESTER TOWNSHIP
 OCEAN COUNTY NEW JERSEY
 TWP. ENGINEER JOHN A. ERNST, JR. P.E. & L.S.
 N.J. LICENSE 3674 TOMS RIVER, N.J.
 RECOMPILED & REDRAWN FEBRUARY 1973
 REVISED DEC. 1979 SCALE 1 INCH = 200 FEET