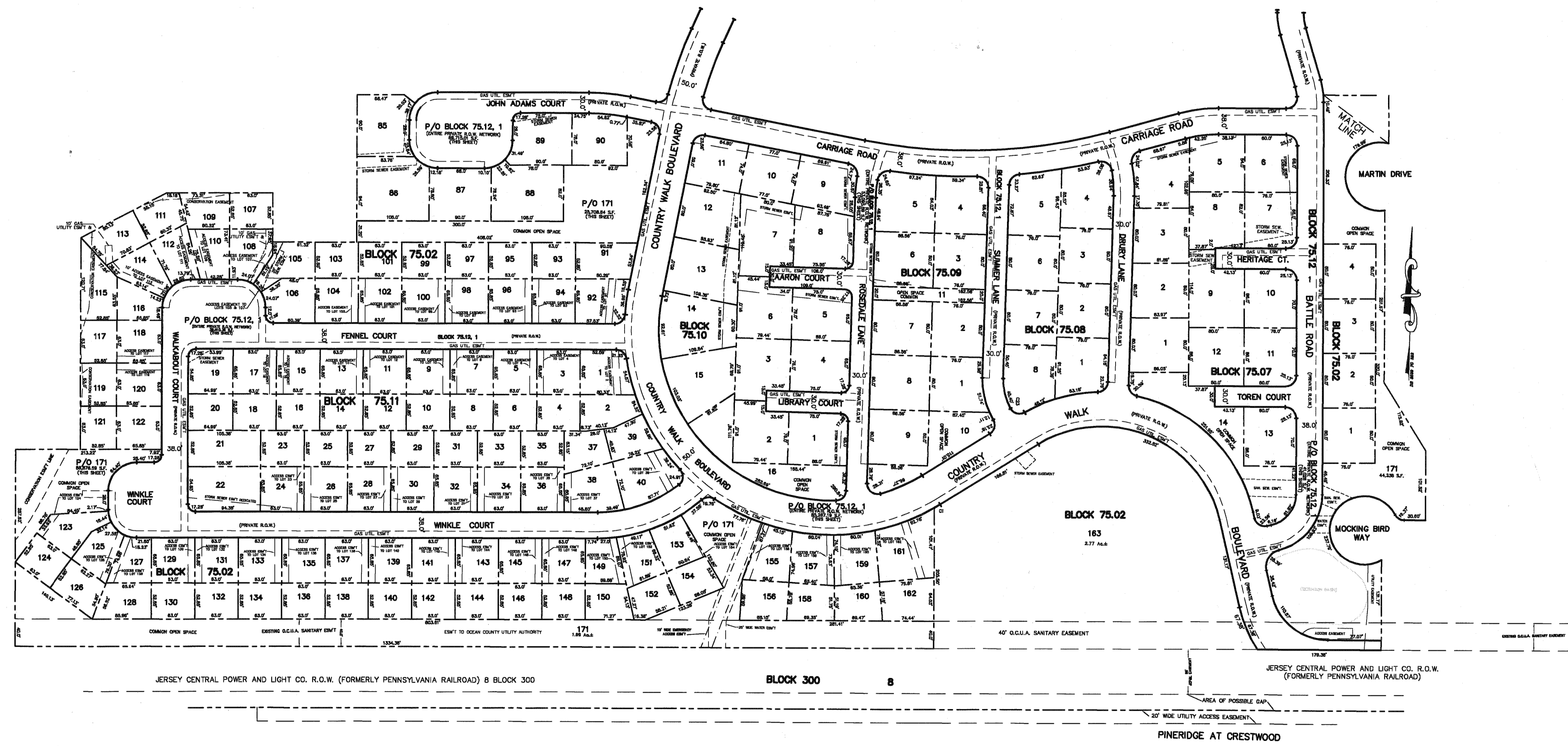


SEE SHEET 16.06

REVISIONS		
DATE	NAME	LIC. No.
12/31/03	RICHARD A MORALLE, PLS	GB25863
07/31/06	RICHARD A MORALLE, PLS	GB25863
12/31/10	RICHARD A MORALLE, PLS	GB25863



SEE SHEET 16

SEE SHEET 16

TAX MAP
 MANCHESTER TOWNSHIP
 OCEAN COUNTY, NEW JERSEY
 SCALE: 1" = 100' DECEMBER, 2003
 RICHARD A. MORALLE, P.E., P.L.S.
 T & M ASSOCIATES
 11 TINDALL ROAD, MIDDLETOWN TOWNSHIP
 NEW JERSEY, 07748

SEE SHEET 17