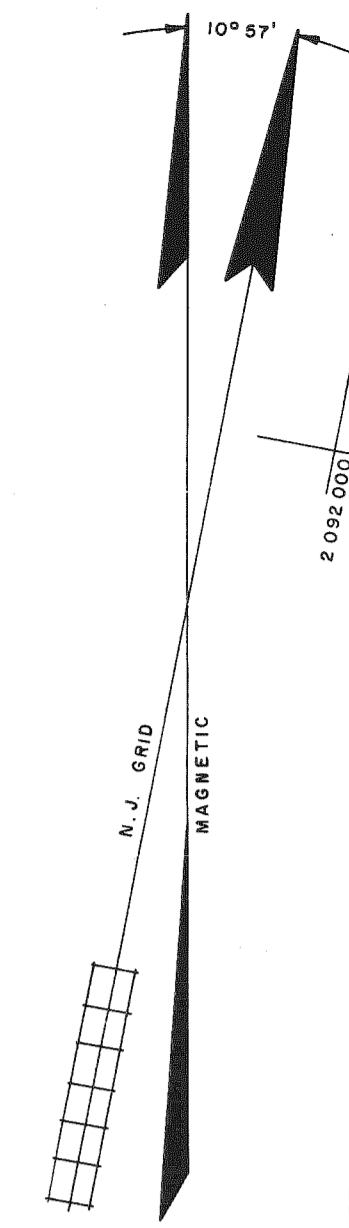
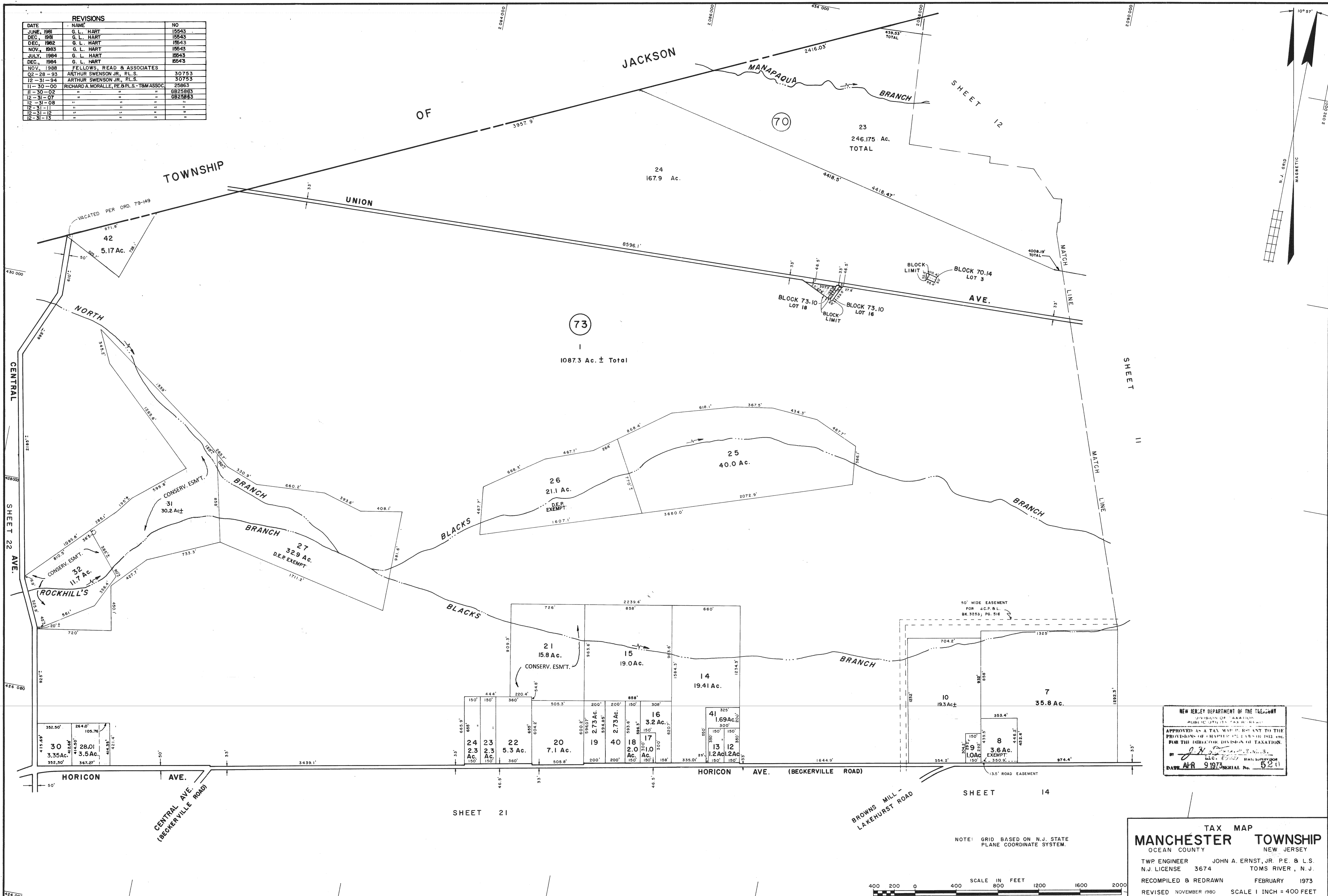


REVISIONS		
DATE	NAME	NO
JUNE, 1981	G. L. HART	15643
DEC. 1981	G. L. HART	15643
DEC. 1982	G. L. HART	15643
NOV. 1983	G. L. HART	15643
JULY, 1984	G. L. HART	15643
DEC., 1984	G. L. HART	15643
NOV., 1988	FELLOWS, READ & ASSOCIATES	
02-28-93	ARTHUR SWENSON JR., P.L.S.	30753
12-31-94	ARTHUR SWENSON JR., P.L.S.	30753
11-30-00	RICHARD A. MORALLE, PE & PLS. - TBM ASSOC.	25863
11-30-02	"	GB25863
12-31-07	"	GB25863
12-31-08	"	"
12-31-11	"	"
12-31-12	"	"
12-31-13	"	"



NEW JERSEY DEPARTMENT OF THE TREASURY
 DIVISION OF TAXATION
 APPROVED AS A TAX MAP IN ACCORDANCE WITH THE
 PROVISIONS OF CHAPTER 124 OF TITLE 54C, N.J.A.C.
 FOR THE DIRECTOR, DIVISION OF TAXATION.
 BY *[Signature]* STATE SUPERVISOR
 DATE APR 9 1973 SERIAL No. 520

TAX MAP
MANCHESTER TOWNSHIP
 OCEAN COUNTY NEW JERSEY
 TWP ENGINEER JOHN A. ERNST, JR. P.E. & L.S.
 N.J. LICENSE 3674 TOMS RIVER, N.J.
 RECOMPILED & REDRAWN FEBRUARY 1973
 REVISED NOVEMBER 1980 SCALE 1 INCH = 400 FEET

NOTE: GRID BASED ON N.J. STATE PLANE COORDINATE SYSTEM.

