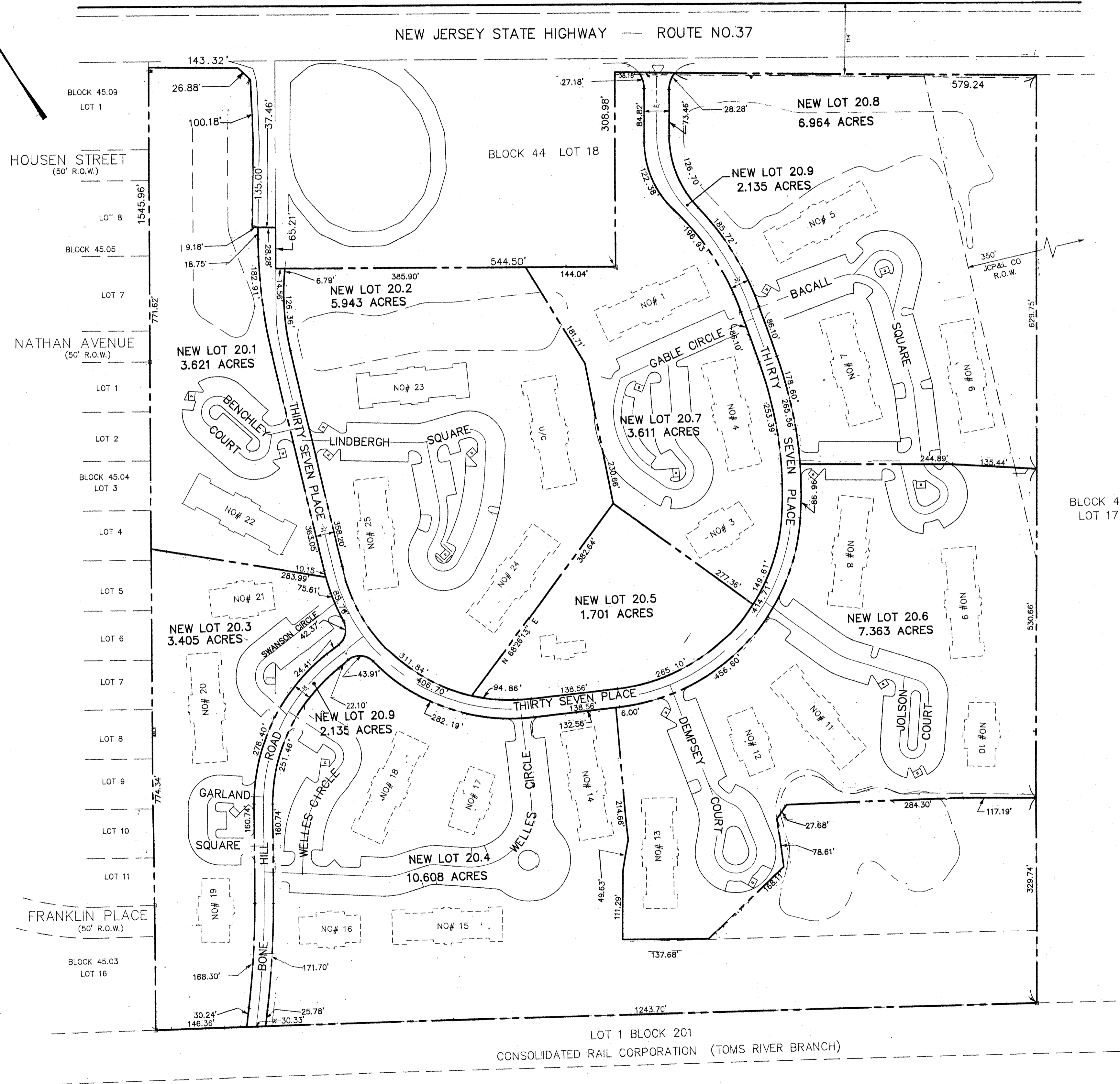
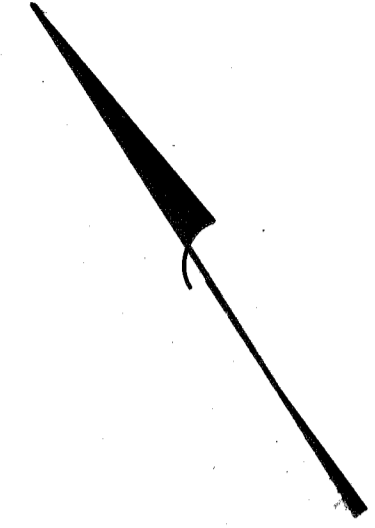


REVISIONS		
DATE	NAME	LIC. No.

SEE SHEET 6



SEE SHEET 8

SEE SHEET 8

LOT 1 BLOCK 201
CONSOLIDATED RAIL CORPORATION (TOMS RIVER BRANCH)

TAX MAP
MANCHESTER TOWNSHIP
 OCEAN COUNTY, NEW JERSEY
 SCALE: 1 = 100 OCTOBER, 1998
RICHARD A. SCHULZ, P.E., P.L.S.
 T & M ASSOCIATES
 11 TINDALL ROAD, MIDDLETOWN TOWNSHIP
 NEW JERSEY, 07748

AL00000 10/17/1998 1324135