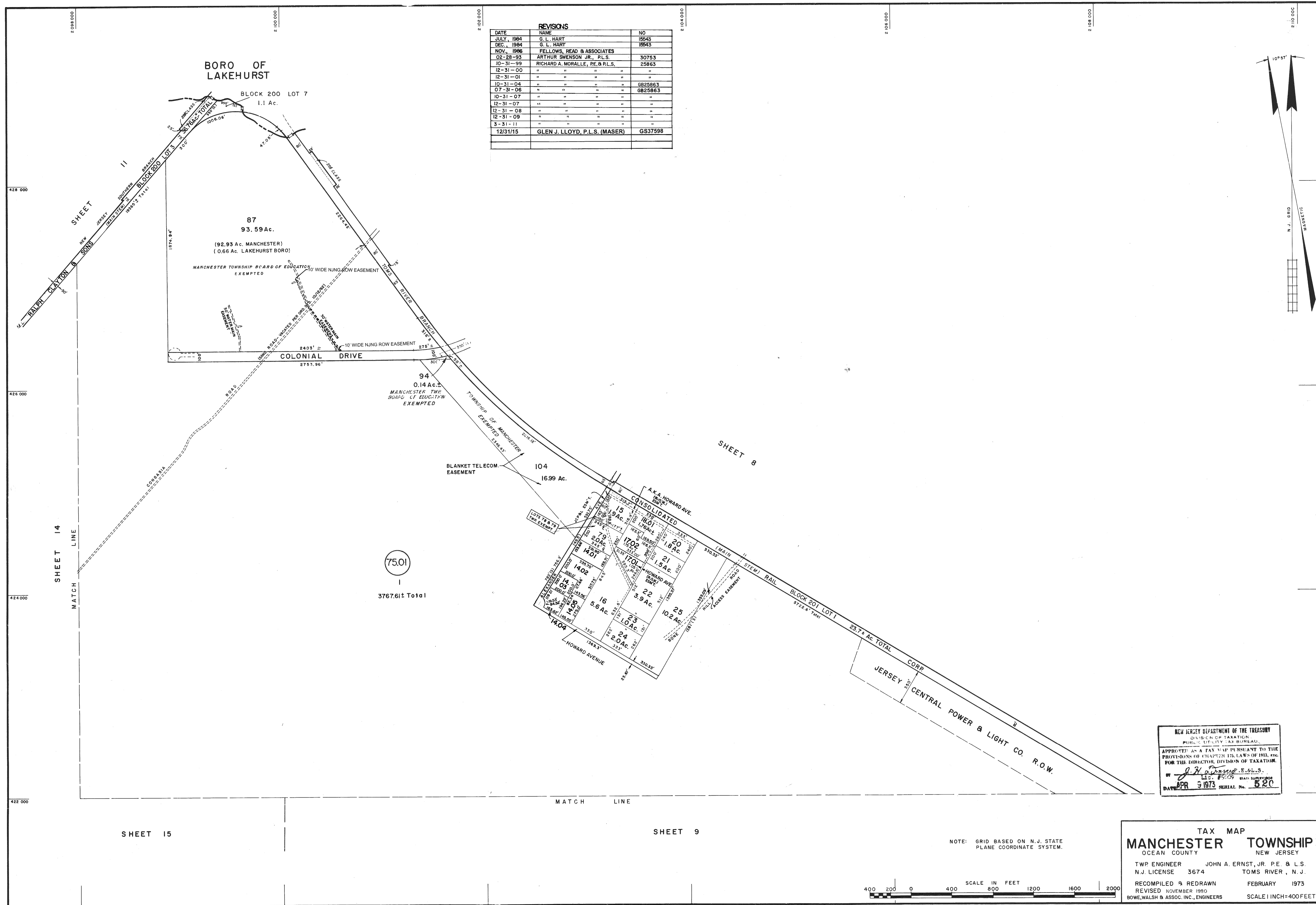
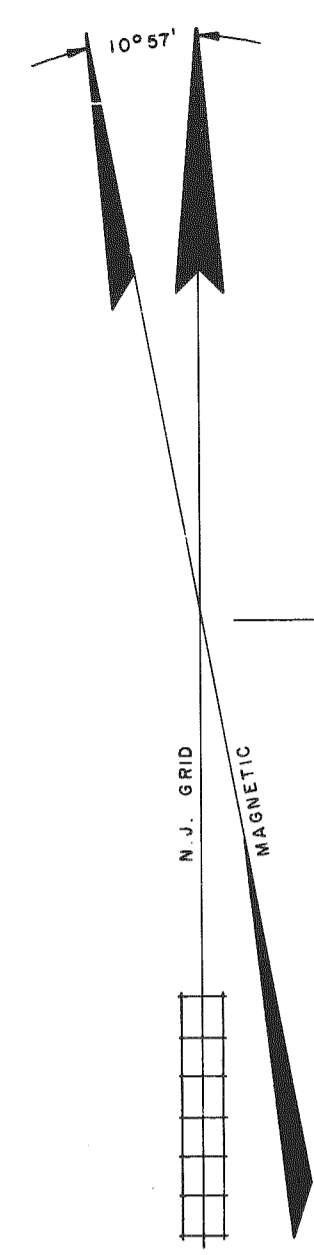


REVISIONS		
DATE	NAME	NO
JULY, 1984	G. L. HART	15643
DEC., 1984	G. L. HART	15643
NOV., 1986	FELLOWS, READ & ASSOCIATES	30753
02-28-85	ARTHUR SWENSON JR., P.L.S.	25863
10-31-99	RICHARD A. MORALLE, PE & P.L.S.	25863
12-31-00	"	"
12-31-01	"	"
10-31-04	"	6825863
07-31-06	"	6825863
10-31-07	"	"
12-31-07	"	"
12-31-08	"	"
12-31-09	"	"
3-31-11	"	"
12/31/15	GLEN J. LLOYD, P.L.S. (MASER)	GS37598



75.01
3767.61± Total

NEW JERSEY DEPARTMENT OF THE TREASURY
DIVISION OF TAXATION
PUBLIC UTILITY TAX BUREAU
APPROVED AS A TAX MAP PURSUANT TO THE
PROVISIONS OF CHAPTER 125, LAWS OF 1913, ETC.
FOR THE DIRECTOR, DIVISION OF TAXATION.
BY *J. H. ...* E.S. & L.S.
LIC. 15009 STATE SUPERVISOR
DATE APR 9 1973 SERIAL No. 520

TAX MAP
MANCHESTER TOWNSHIP
OCEAN COUNTY NEW JERSEY
TWP. ENGINEER JOHN A. ERNST, JR. P.E. & L.S.
N.J. LICENSE 3674 TOMS RIVER, N.J.
RECOMPILED & REDRAWN FEBRUARY 1973
REVISED NOVEMBER 1980
BOWE, WALSH & ASSOC. INC., ENGINEERS SCALE 1 INCH=400 FEET

NOTE: GRID BASED ON N.J. STATE PLANE COORDINATE SYSTEM.

