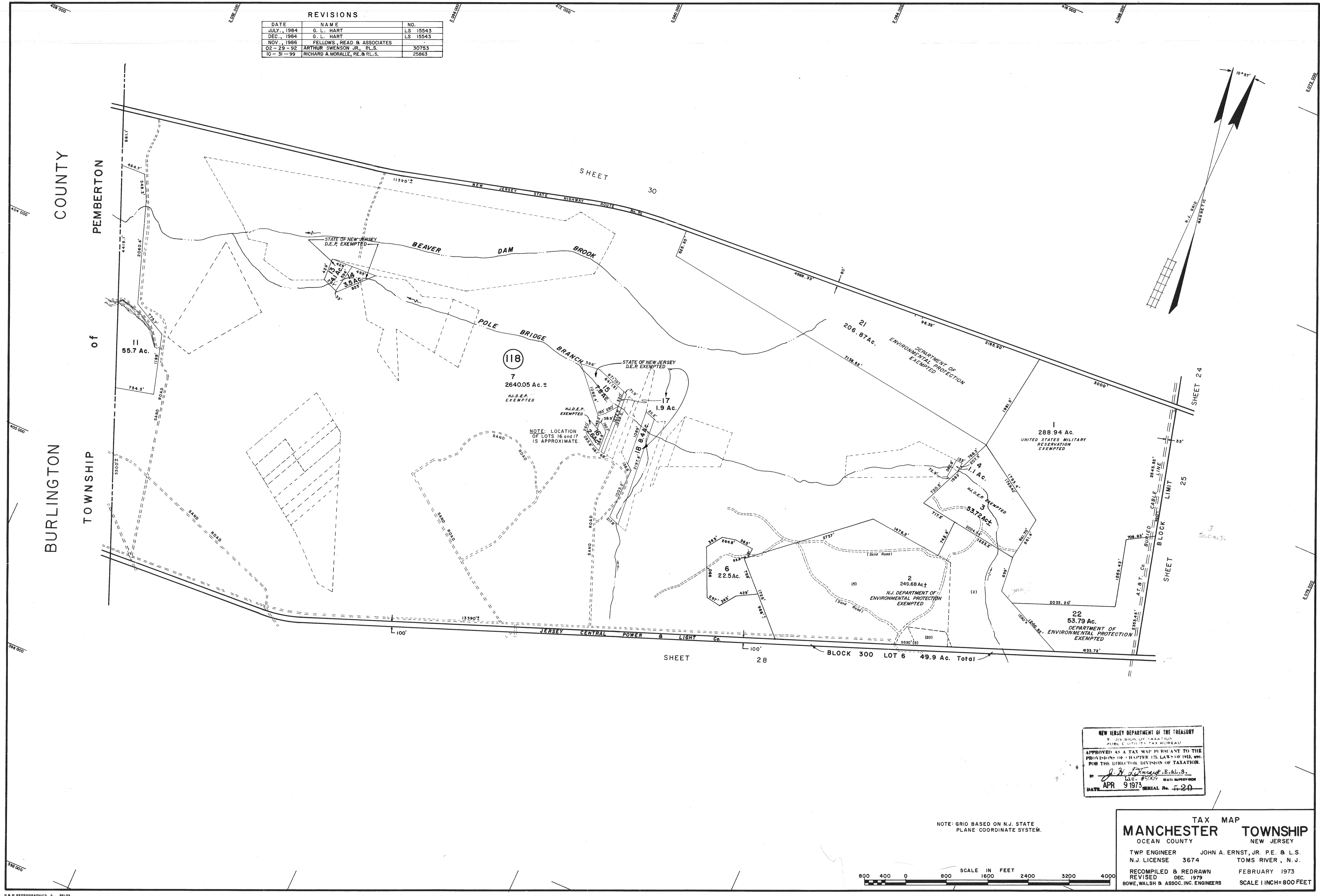
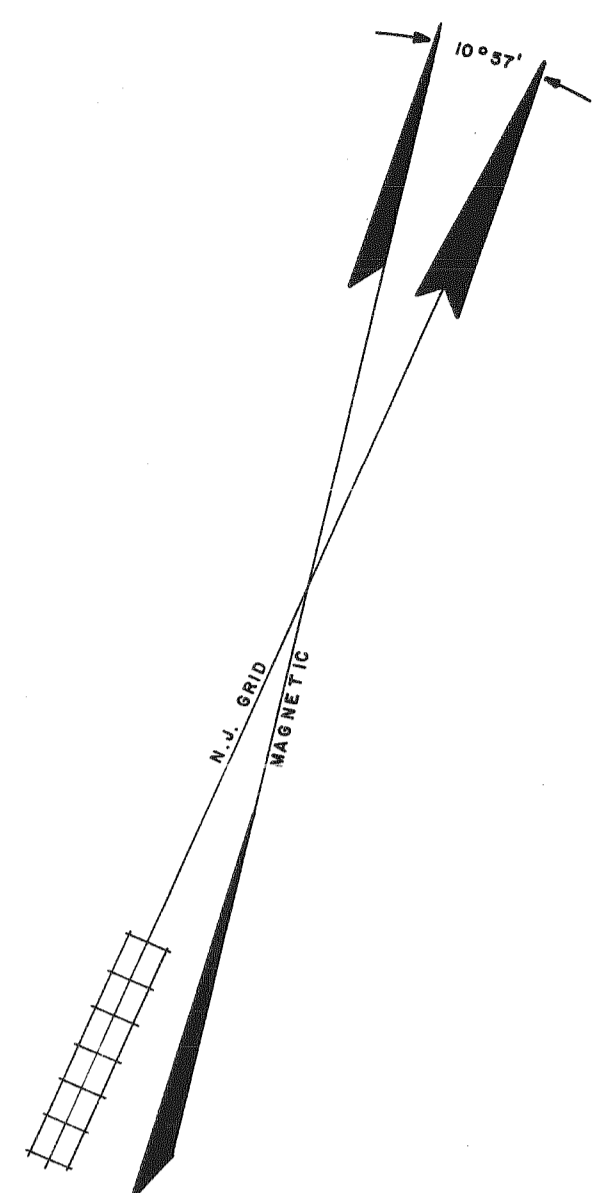


REVISIONS		
DATE	NAME	NO.
JULY, 1984	G. L. HART	LS 15543
DEC., 1984	G. L. HART	LS 15543
NOV., 1986	FELLOWS, READ & ASSOCIATES	
02-29-92	ARTHUR SWENSON JR., P.L.S.	30753
10-31-99	RICHARD A. MORALLE, PE. & P.L.S.	25863



NEW JERSEY DEPARTMENT OF THE TREASURY
 DIVISION OF TAXATION
 PUBLIC UTILITIES TAX BUREAU
 APPROVED AS A TAX MAP PURSUANT TO THE
 PROVISIONS OF CHAPTER 125, LAWS OF 1968, AND
 FOR THE DIRECTOR, DIVISION OF TAXATION.
 BY *J. H. [Signature]*, E.L.S.
 L.S. # 25007 STATE SUPERVISOR
 DATE APR 9 1973 SERIAL No. 5-20

NOTE: GRID BASED ON N.J. STATE PLANE COORDINATE SYSTEM.



TAX MAP
MANCHESTER TOWNSHIP
 OCEAN COUNTY NEW JERSEY
 TWP ENGINEER JOHN A. ERNST, JR. P.E. & L.S.
 N.J. LICENSE 3674 TOMS RIVER, N.J.
 RECOMPILED & REDRAWN FEBRUARY 1973
 REVISED DEC. 1979
 BOWE, WALSH & ASSOC. INC. ENGINEERS SCALE 1 INCH=800 FEET