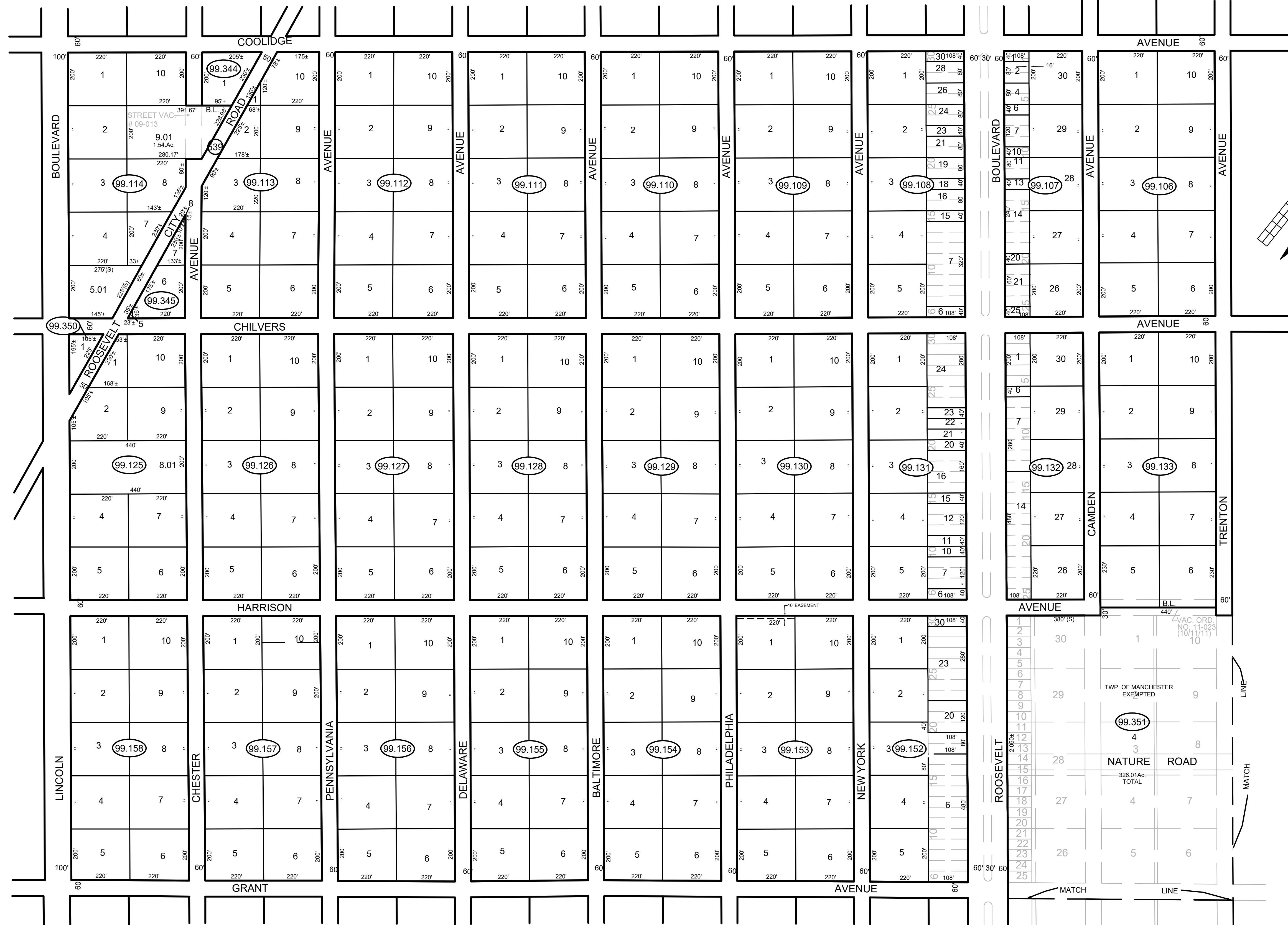


SHEET 26.01

SHEET 26.02

SHEET 26.09

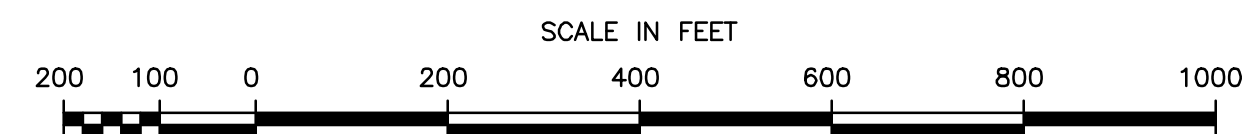
SHEET 26.10



DATE	NAME	LIC. No.
12/30/22	GLEN J. LLOYD, P.L.S.	GS37598
12/31/11		
12/31/09		
07-31-05	RICHARD A. MORALLE, P.E. & P.L.S.	GB25863
NOV. 1989	FELLOWS, READ & ASSOCIATES	
NOV. 1988	FELLOWS, READ & ASSOCIATES	
NOV. 1987	FELLOWS, READ & ASSOCIATES	
DEC. 1984	G.L. HART	15543
JULY, 1984	G.L. HART	15543
DEC. 1982	G.L. HART	15543
DEC. 1981	G.L. HART	15543

REVISIONS

SHEET 26.05



THIS MAP HAS BEEN DRAWN USING COMPUTER-AIDED DRAFTING/DESIGN (CAD/D).

THIS SHEET WAS FORMERLY
CERTIFIED ON APRIL 9, 1973,
ASSIGNED SERIAL NUMBER 520,
SIGNED BY J.H. DITMARS, P.E. & L.S.

TAX MAP
TOWNSHIP OF MANCHESTER
OCEAN COUNTY, NEW JERSEY
SCALE 1"=200' DECEMBER 2022
GLEN J. LLOYD
NJ PROFESSIONAL LAND SURVEYOR LIC. #GS37598
COLLIERS ENGINEERING & DESIGN
331 NEWMAN SPRINGS RD., STE.203, RED BANK, NJ 07701