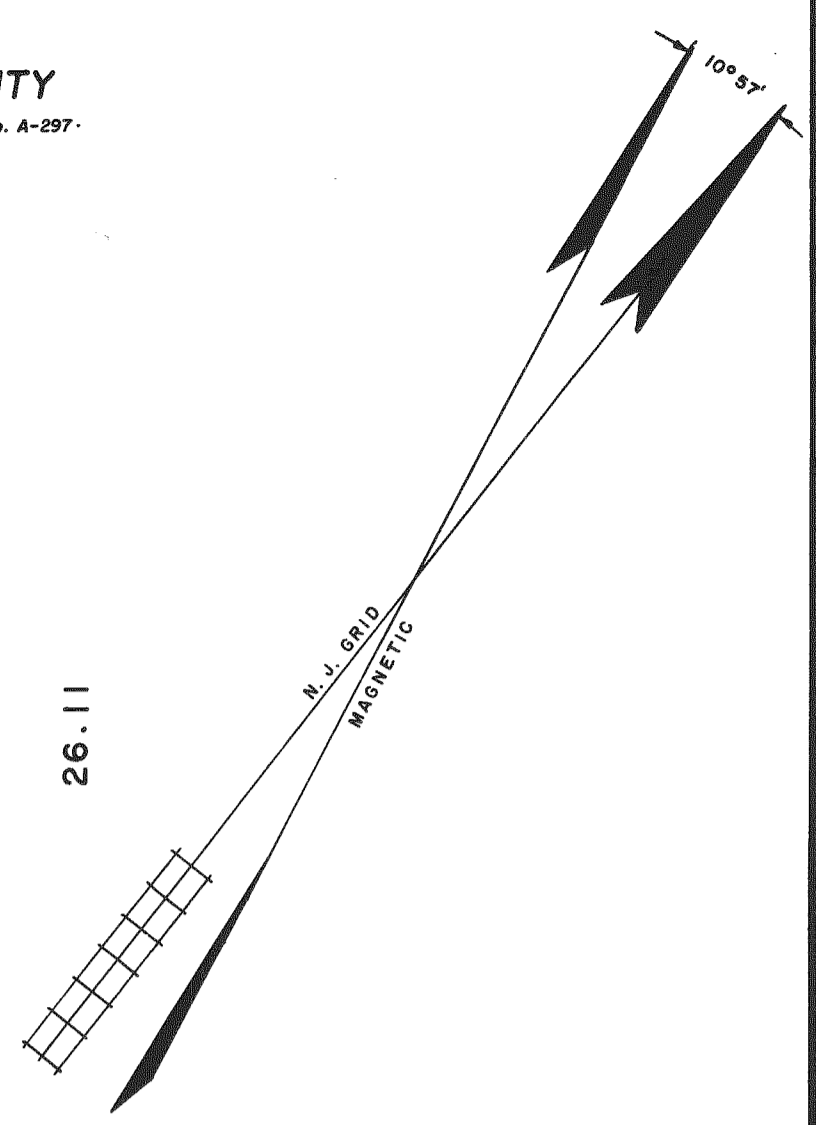
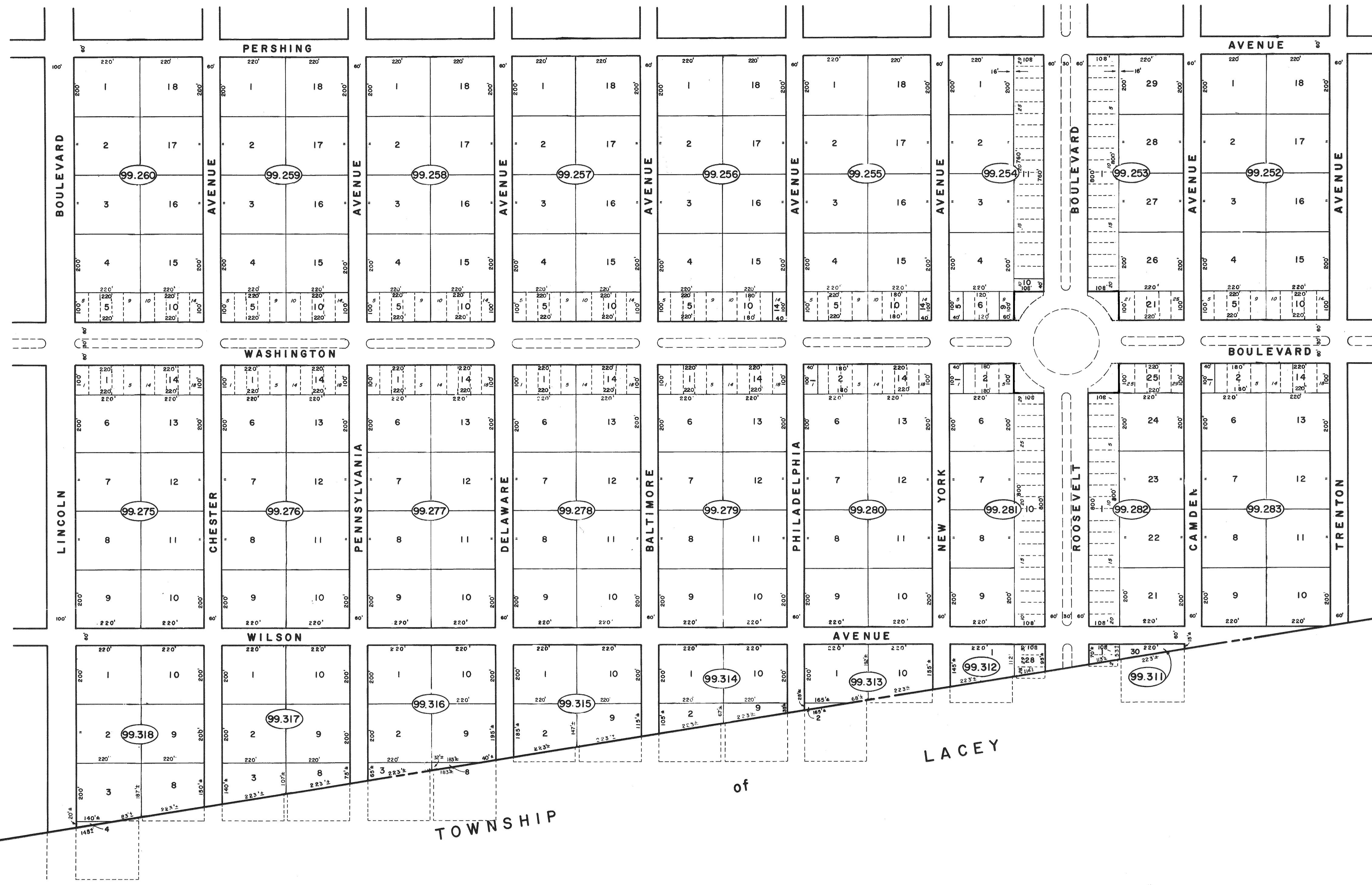


REVISIONS		
DATE	NAME	NO.
DEC., 1984	G. L. HART	L.S. 15543
MAR., 1986	FELLOWS, READ & ASSOCIATES	

SHEET 26.05

Roosevelt City
FILED O.C.C.O. 12/24/1924 MAP No. A-297

SHEET 26.03



NOTE: ALL ALLEYS VACATED PER ORDINANCE 78-111, APRIL 20, 1978

NEW JERSEY DEPARTMENT OF THE TREASURY
DIVISION OF TAXATION
PUBLIC UTILITY TAX BUREAU
APPROVED AS A TAX MAP PURSUANT TO THE PROVISIONS OF CHAPTER 125, LAWS OF 1973, FOR THE DIRECTOR, DIVISION OF TAXATION.
DATE APR 9 1975

TAX MAP
MANCHESTER TOWNSHIP
OCEAN COUNTY NEW JERSEY
TWP ENGINEER JOHN A. ERNST, JR. P.E. & L.S.
N.J. LICENSE 3674 TOMS RIVER, N.J.
RECOMPILED & REDRAWN FEBRUARY, 1973
REVISED DEC. 1979 SCALE 1 INCH = 200 FEET

