

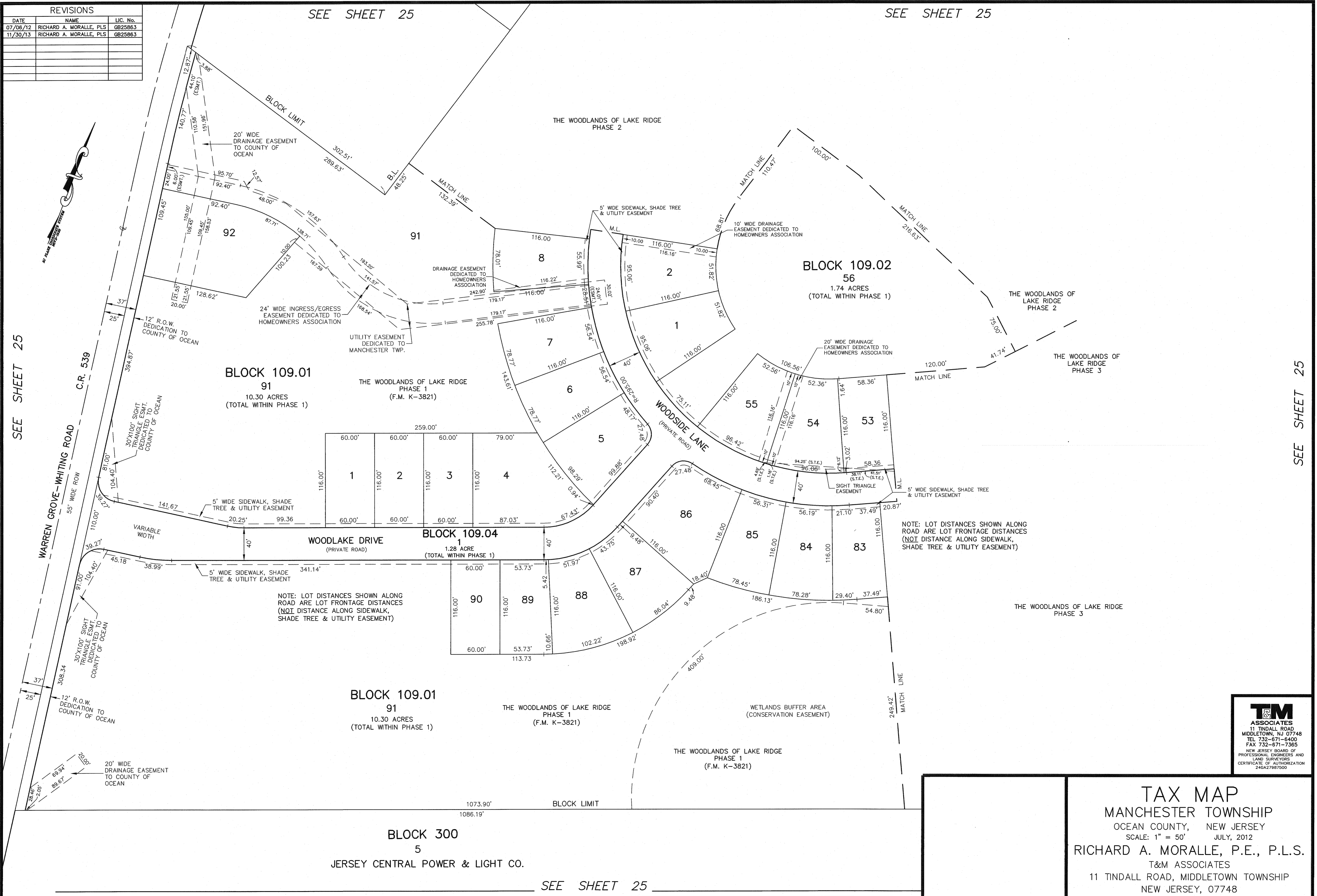
REVISIONS		
DATE	NAME	LIC. No.
07/06/12	RICHARD A. MORALLE, PLS	GB25863
11/30/13	RICHARD A. MORALLE, PLS	GB25863

SEE SHEET 25

SEE SHEET 25

SEE SHEET 25

SEE SHEET 25



BLOCK 109.01
91
10.30 ACRES
(TOTAL WITHIN PHASE 1)

BLOCK 109.02
56
1.74 ACRES
(TOTAL WITHIN PHASE 1)

BLOCK 109.04
1
1.28 ACRE
(TOTAL WITHIN PHASE 1)

BLOCK 109.01
91
10.30 ACRES
(TOTAL WITHIN PHASE 1)

BLOCK 300
5
JERSEY CENTRAL POWER & LIGHT CO.

NOTE: LOT DISTANCES SHOWN ALONG ROAD ARE LOT FRONTAGE DISTANCES (NOT DISTANCE ALONG SIDEWALK, SHADE TREE & UTILITY EASEMENT)

NOTE: LOT DISTANCES SHOWN ALONG ROAD ARE LOT FRONTAGE DISTANCES (NOT DISTANCE ALONG SIDEWALK, SHADE TREE & UTILITY EASEMENT)

T&M ASSOCIATES
11 TINDALL ROAD
MIDDLETOWN, NJ 07748
TEL 732-671-6400
FAX 732-671-7365
NEW JERSEY BOARD OF PROFESSIONAL ENGINEERS AND LAND SURVEYORS
CERTIFICATE OF AUTHORIZATION 24G2787500

TAX MAP
MANCHESTER TOWNSHIP
OCEAN COUNTY, NEW JERSEY
SCALE: 1" = 50' JULY, 2012
RICHARD A. MORALLE, P.E., P.L.S.
T&M ASSOCIATES
11 TINDALL ROAD, MIDDLETOWN TOWNSHIP
NEW JERSEY, 07748

SEE SHEET 25