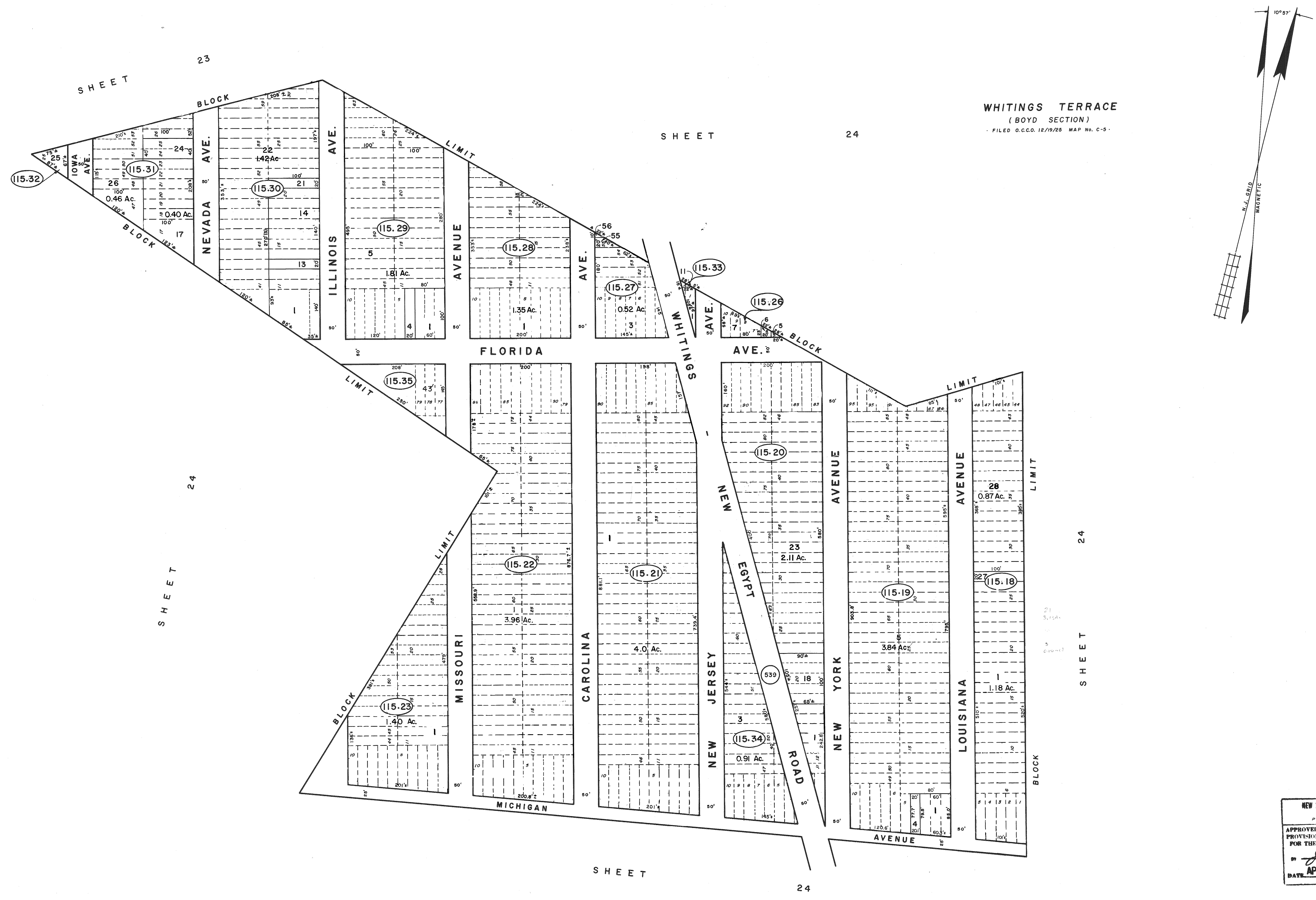


REVISIONS		
DATE	NAME	NO.
DEC. 1981	G. L. HART	LS 15543
DEC. 1984	G. L. HART	LS 15543
MAR. 1986	FELLOWS, READ & ASSOCIATES	
NOV. 1987	FELLOWS, READ & ASSOCIATES	
NOV. 1989	FELLOWS, READ & ASSOCIATES	



WHITINGS TERRACE
(BOYD SECTION)
FILED O.C.C.O. 12/19/75 MAP No. C-5.

NEW JERSEY DEPARTMENT OF THE TREASURY
DIVISION OF TAXATION
PUBLIC UTILITY TAX BUREAU
APPROVED AS A TAX MAP PURSUANT TO THE
PROVISIONS OF CHAPTER 125, LAWS OF 1913, ETC.
FOR THE DIRECTOR, DIVISION OF TAXATION.
BY *J. H. [Signature]* E.L.S.
LIC. 12-05 STATE SUPERVISOR
DATE APR 9 1973 SERIAL No. 520

TAX MAP
MANCHESTER TOWNSHIP
OCEAN COUNTY NEW JERSEY
TWP ENGINEER JOHN A. ERNST, JR. P.E. & L.S.
N.J. LICENSE 3674 TOMS RIVER, N.J.
RECOMPILED & REDRAWN FEBRUARY 1973
REVISED DEC. 1979 SCALE 1 INCH = 100 FEET

