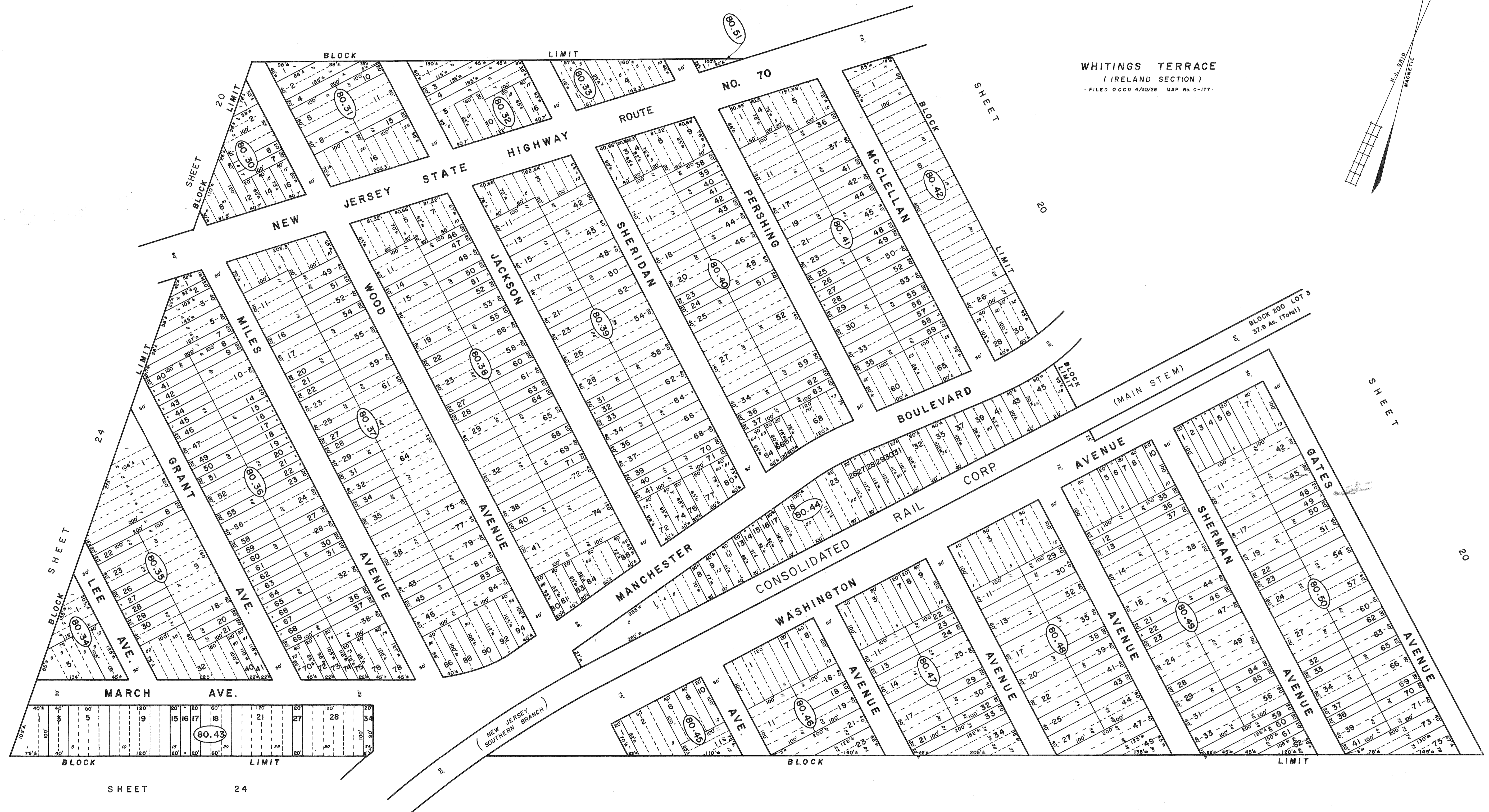
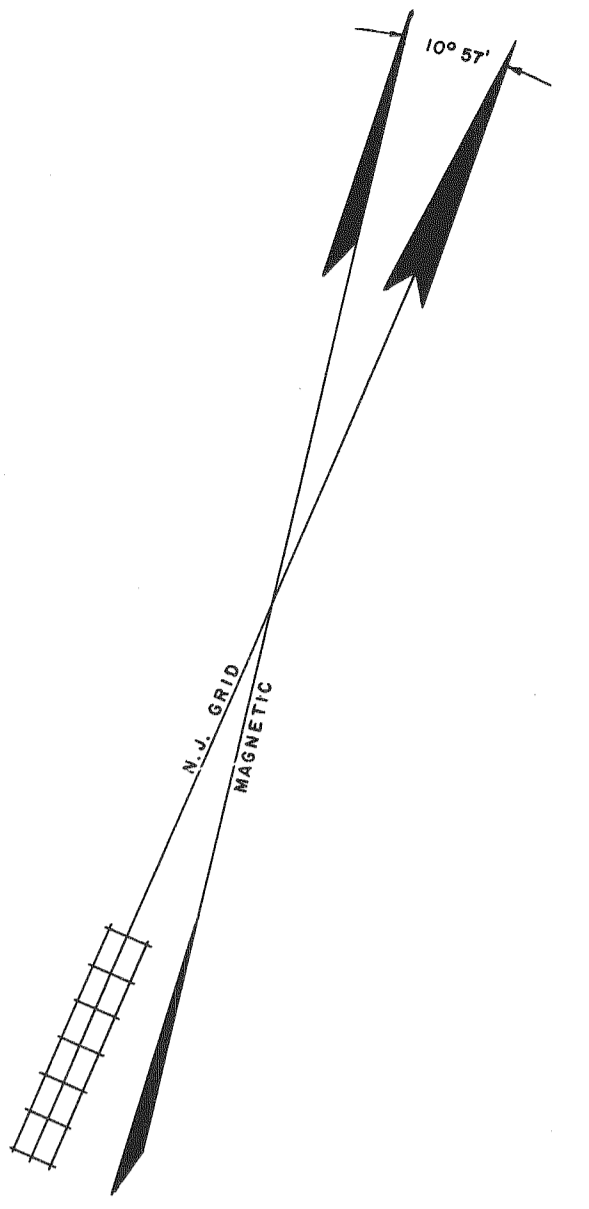


REVISIONS		
DATE	NAME	NO.
DEC. 1981	G. L. HART	LS 15543
JULY 1984	G. L. HART	LS 15543
DEC. 1984	G. L. HART	LS 15543
MAR. 1986	FELLOWS, READ & ASSOCIATES	
NOV. 1989	FELLOWS, READ & ASSOCIATES	

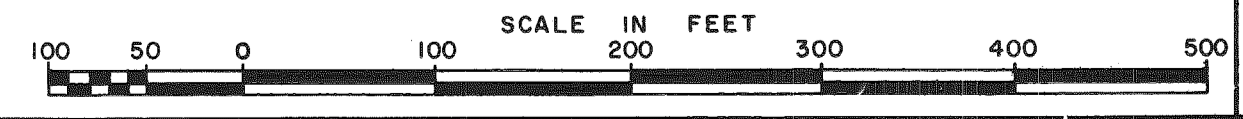
SHEET 20



WHITINGS TERRACE
(IRELAND SECTION)
FILED O C C O 4/30/26 MAP No. C-177.

NEW JERSEY DEPARTMENT OF THE TREASURY
DIVISION OF TAXATION
PUBLIC UTILITY TAX BUREAU
APPROVED AS A TAX MAP PURSUANT TO THE
PROVISIONS OF CHAPTER 175, LAWS OF 1913, ETC.
FOR THE DIRECTOR, DIVISION OF TAXATION.
BY *J. H. [Signature]* S.E.L.S.
L.C. #5009 STATE SUPERVISOR
DATE APR 9 1973 SERIAL No. 520

TAX MAP
MANCHESTER TOWNSHIP
OCEAN COUNTY NEW JERSEY
TWP ENGINEER JOHN A. ERNST, JR. P.E. & L.S.
N.J. LICENSE 3674 TOMS RIVER, N.J.
RECOMPILED & REDRAWN FEBRUARY 1973
REVISED DEC. 1979 SCALE 1 INCH = 100 FEET



SHEET 20