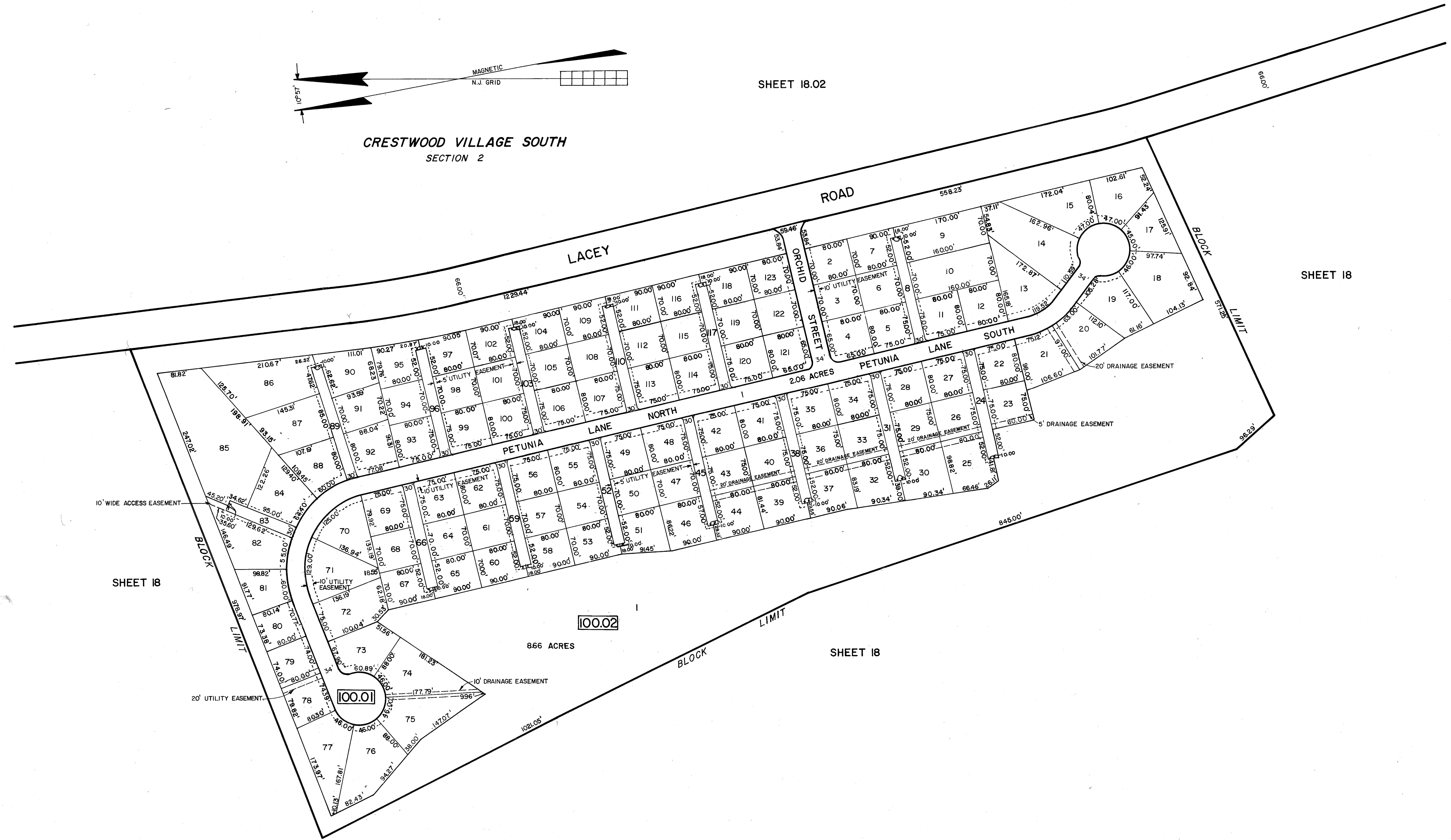


SHEET 18.02

CRESTWOOD VILLAGE SOUTH
SECTION 2

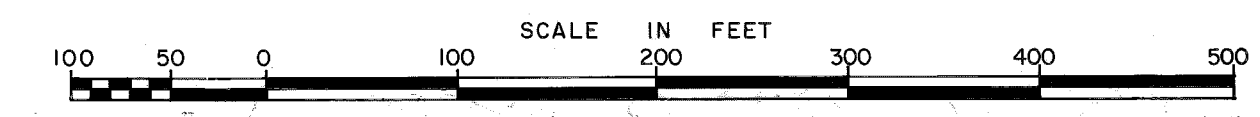


SHEET 18

SHEET 18

SHEET 18

NOV, 1989	FELLOWS, READ & ASSOCIATES
REVISIONS	



TAX MAP
MANCHESTER TOWNSHIP
 OCEAN COUNTY NEW JERSEY
JOHN C. FELLOWS JR., PE. & L.S.
 LIC. NO. 10243
 CONSULTING ENGINEERS AND LAND SURVEYORS
 310 MAIN STREET
 TOMS RIVER, NEW JERSEY 08753
 MARCH 1988 SCALE: 1 INCH=100'