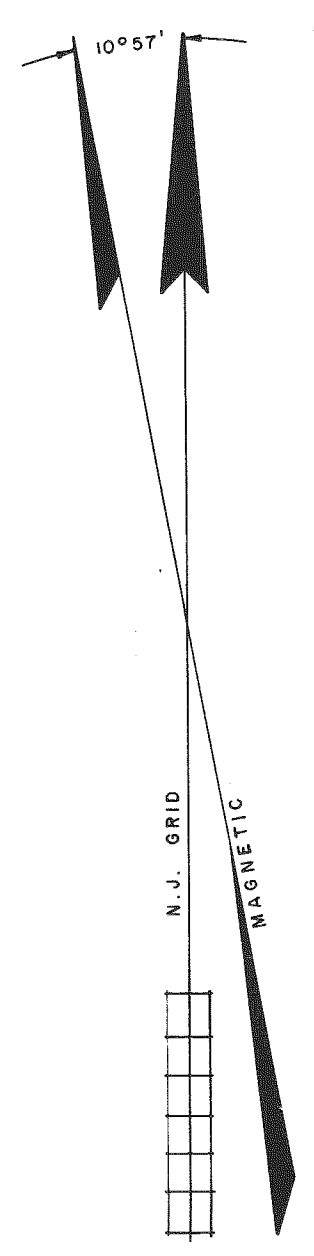
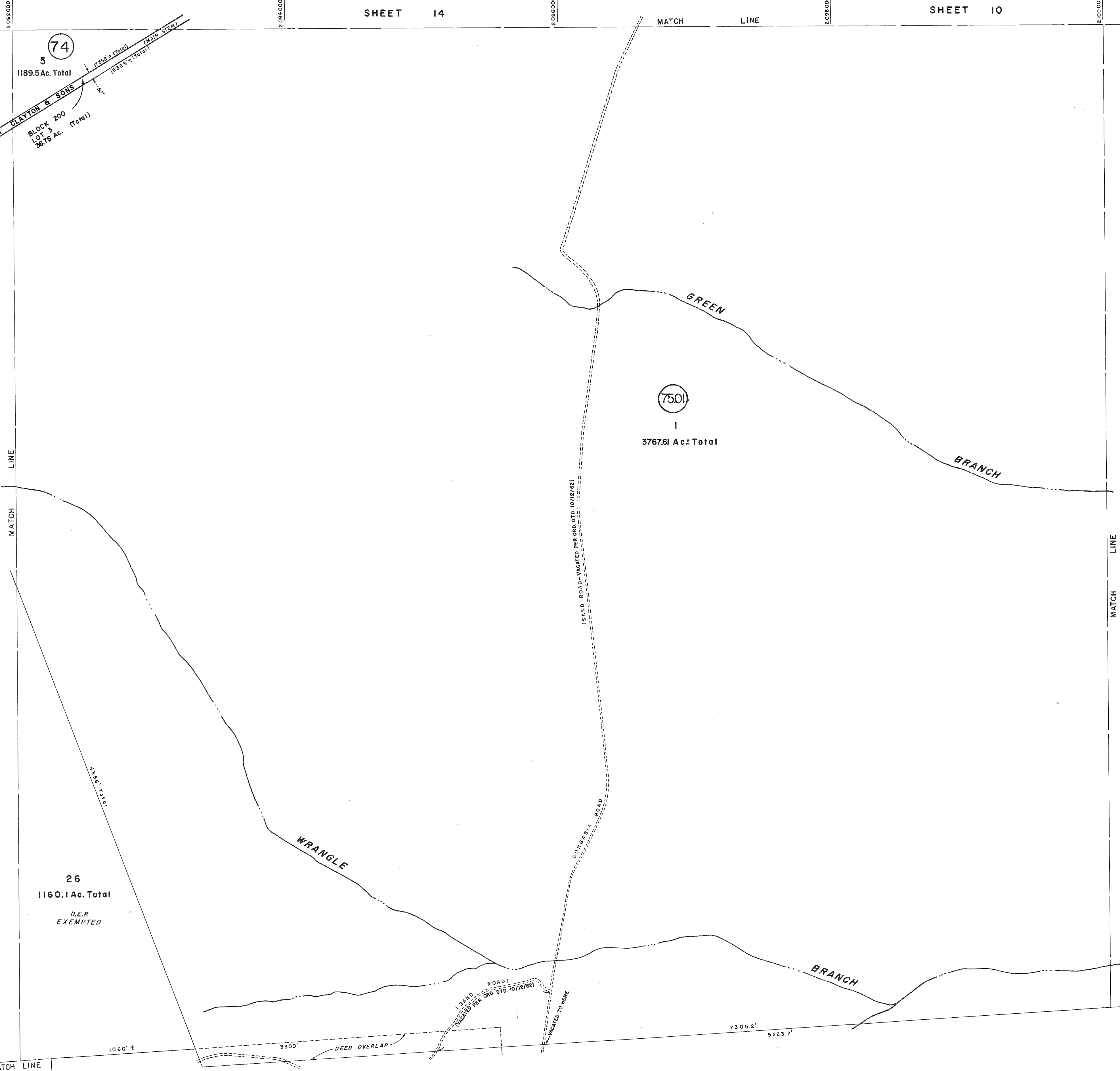


REVISIONS		
DATE	NAME	NO
JULY, 1984	G. L. HART	15543
DEC, 1984	G. L. HART	15543
NOV, 1986	FELLOWS, READ & ASSOCIATES	
02-28-93	ARTHUR SWENSON JR. P.L.S.	30753
12-31-03	RICHARD A. MORALLE, P.E. & P.L.S.	6825863



SHEET 20

SHEET 9

SHEET 19

SHEET 16

SHEET 14

SHEET 10

NEW JERSEY DEPARTMENT OF THE TREASURY
 DIVISION OF TAXATION
 PUBLIC UTILITY TAX BUREAU

APPROVED AS A TAX MAP PURSUANT TO THE
 PROVISIONS OF CHAPTER 125, LAWS OF 1981, ETC.
 FOR THE DIRECTOR, DIVISION OF TAXATION.

BY: [Signature]
 DATE: 11/9/93 SERIAL No. 5273

TAX MAP
MANCHESTER TOWNSHIP
 OCEAN COUNTY NEW JERSEY

TWP. ENGINEER JOHN A. ERNST, JR. P.E. & L.S.
 N.J. LICENSE 3674 TOMS RIVER, N.J.

RECOMPILED & REDRAWN FEBRUARY 1973
 REVISED NOVEMBER 1980 SCALE 1 INCH = 400 FEET

NOTE: GRID BASED ON N.J. STATE PLANE COORDINATE SYSTEM.

