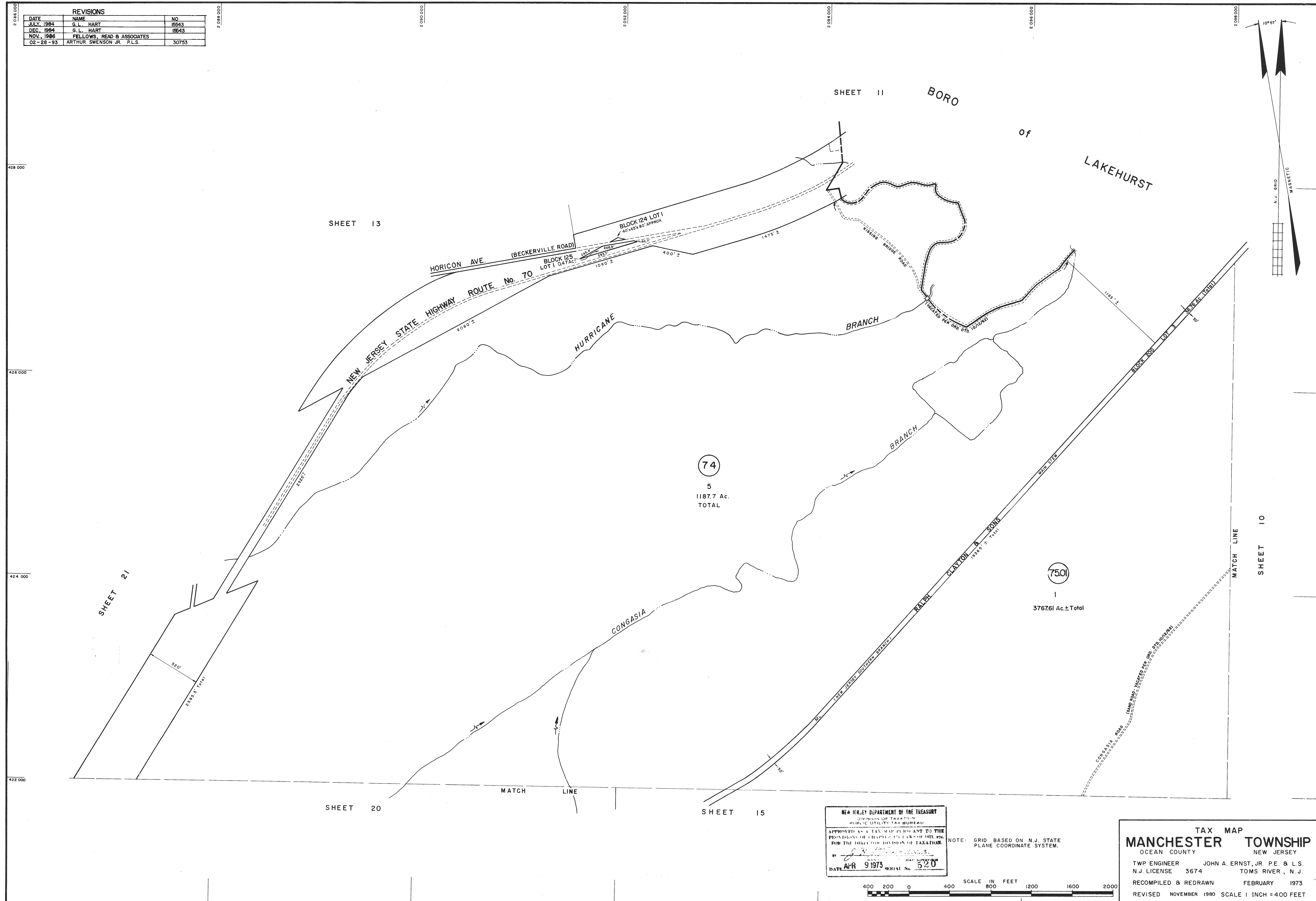
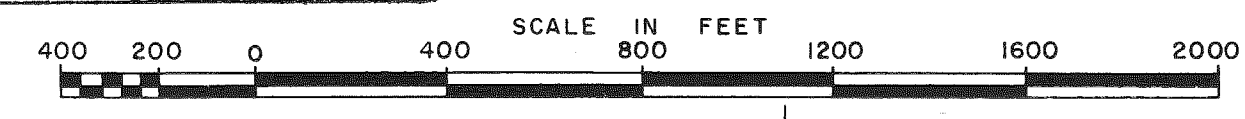


REVISIONS		
DATE	NAME	NO
JULY 1984	G. L. HART	15543
DEC. 1984	G. L. HART	15543
NOV. 1986	FELLOWS, READ & ASSOCIATES	
02-28-93	ARTHUR SWENSON JR. P.L.S.	30753



NEW JERSEY DEPARTMENT OF THE TREASURY  
 DIVISION OF TAXATION  
 PUBLIC UTILITY TAX BUREAU  
 APPROVED AS A TAX MAP PURSUANT TO THE  
 PROVISIONS OF CHAPTER 125, ARTICLE 101, P.L. 1973  
 FOR THE DIVISION OF TAXATION.  
 BY: [Signature]  
 DATE: APR 9 1973 SERIAL No. 520

NOTE: GRID BASED ON N.J. STATE PLANE COORDINATE SYSTEM.



TAX MAP  
**MANCHESTER TOWNSHIP**  
 OCEAN COUNTY NEW JERSEY  
 TWP ENGINEER JOHN A. ERNST, JR. P.E. & L.S.  
 N.J. LICENSE 3674 TOMS RIVER, N.J.  
 RECOMPILED & REDRAWN FEBRUARY 1973  
 REVISED NOVEMBER 1980 SCALE 1 INCH = 400 FEET