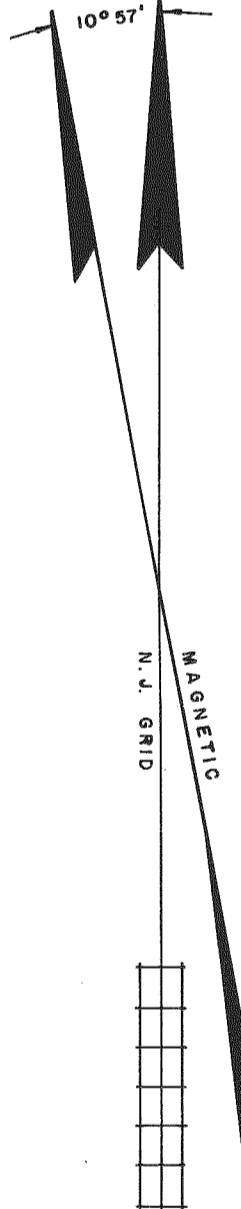
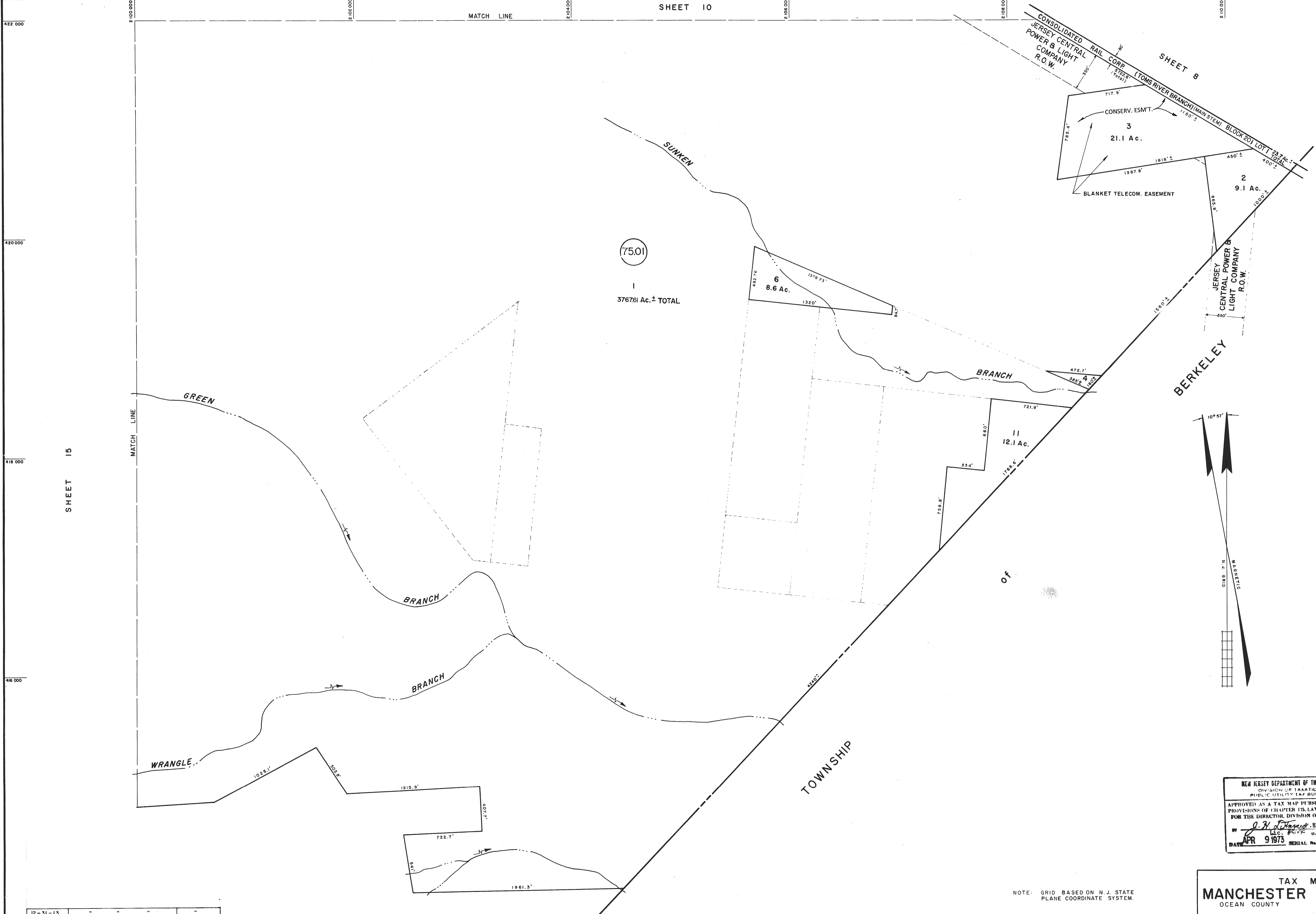


MATCH LINE



DATE	NAME	NO
12-31-13		
12-31-09	RICHARD A. MORALLE, P.L.S.	0825863
02-28-93	ARTHUR SWENSON JR., P.L.S.	30753
DEC. 1984	G. L. HART	15643
JULY 1984	G. L. HART	15643

REVISIONS

NEW JERSEY DEPARTMENT OF THE TREASURY
 DIVISION OF TAXATION
 PUBLIC UTILITY TAX BUREAU
 APPROVED AS A TAX MAP PURSUANT TO THE
 PROVISIONS OF CHAPTER 125, LAWS OF 1913, ETC.
 FOR THE DIRECTOR, DIVISION OF TAXATION
 BY *J. H. [Signature]*
 L.L.C. STATE SUPERVISOR
 DATE APR 9 1973 SERIAL No. 520

TAX MAP
MANCHESTER TOWNSHIP
 OCEAN COUNTY NEW JERSEY

TWP ENGINEER JOHN A. ERNST, JR., P.E. & L.S.
 N.J. LICENSE 3674 TOMS RIVER, N.J.
 RECOMPILED & REDRAWN FEBRUARY 1973
 REVISED NOVEMBER 1980 SCALE 1 INCH = 400 FEET

NOTE: GRID BASED ON N.J. STATE PLANE COORDINATE SYSTEM.

