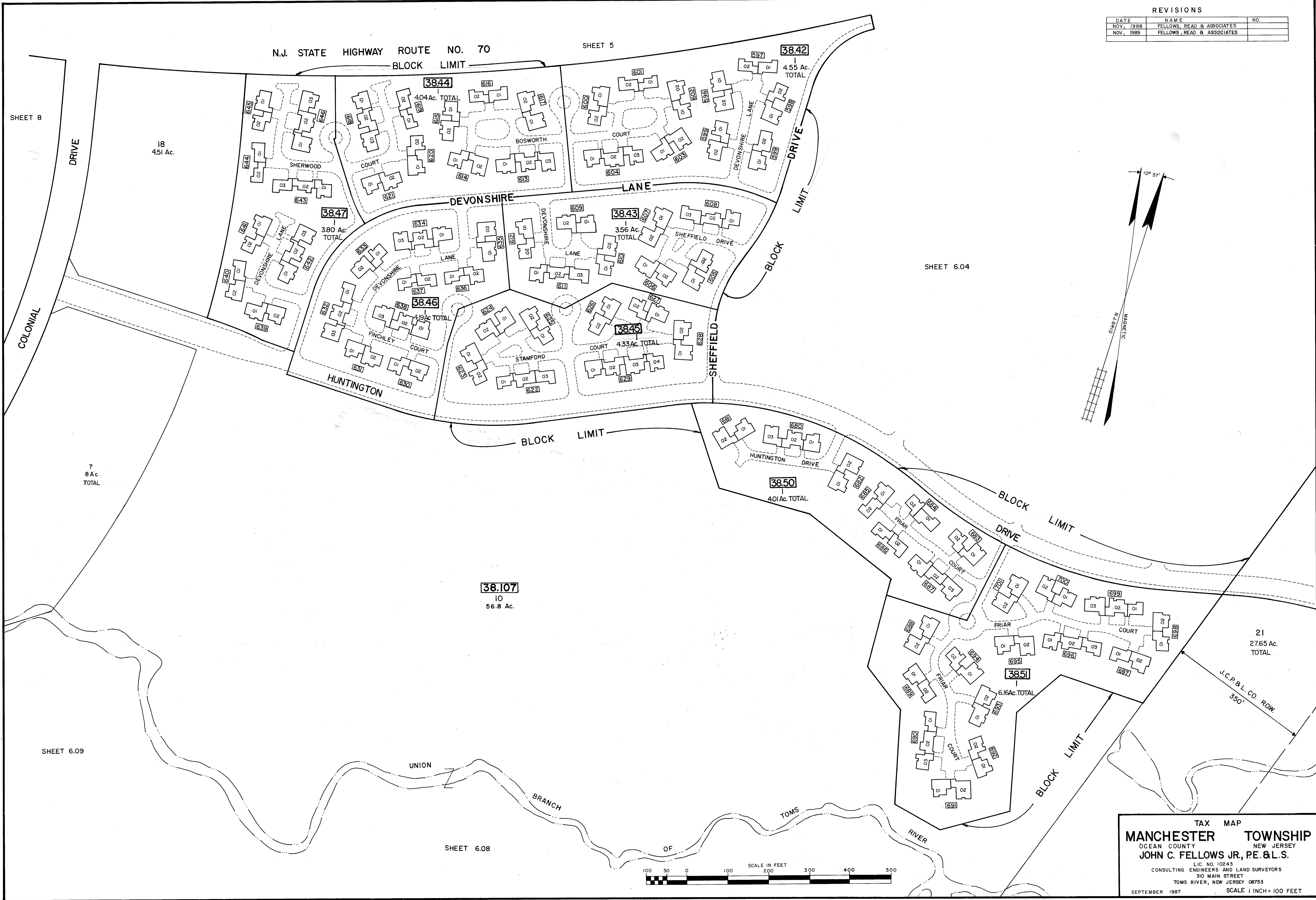


REVISIONS		
DATE	NAME	NO.
NOV, 1988	FELLOWS, READ & ASSOCIATES	
NOV, 1989	FELLOWS, READ & ASSOCIATES	



TAX MAP
MANCHESTER TOWNSHIP
 OCEAN COUNTY NEW JERSEY
JOHN C. FELLOWS JR., P.E. & L.S.
 LIC. NO. 10243
 CONSULTING ENGINEERS AND LAND SURVEYORS
 310 MAIN STREET
 TOMS RIVER, NEW JERSEY 08753
 SEPTEMBER 1987 SCALE 1 INCH = 100 FEET