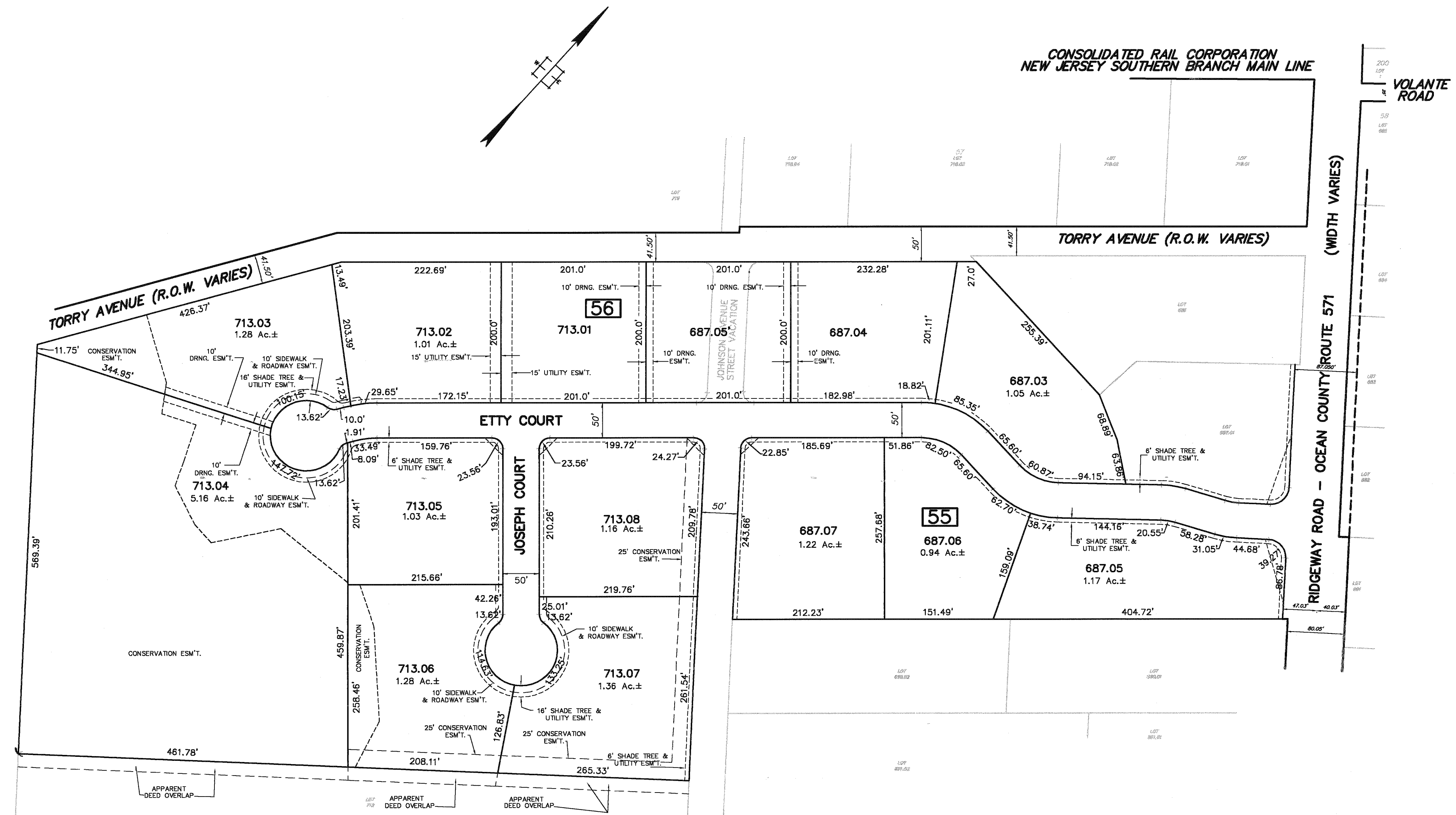


REVISIONS		
DATE	NAME	LIC. No.
06/30/05	RICHARD A. MORALLE, PLS	GB25863
07/31/06	RICHARD A. MORALLE, PLS	GB25863

SEE SHEET 5

SEE SHEET 3



SEE SHEET 5

SEE SHEET 2

SEE SHEET 2

SEE SHEET 5

TAX MAP
MANCHESTER TOWNSHIP
 OCEAN COUNTY, NEW JERSEY
 SCALE: 1 = 50 OCTOBER, 2004
RICHARD A. MORALLE, P.E., P.L.S.
 T & M ASSOCIATES
 11 TINDALL ROAD, MIDDLETOWN TOWNSHIP
 NEW JERSEY, 07748