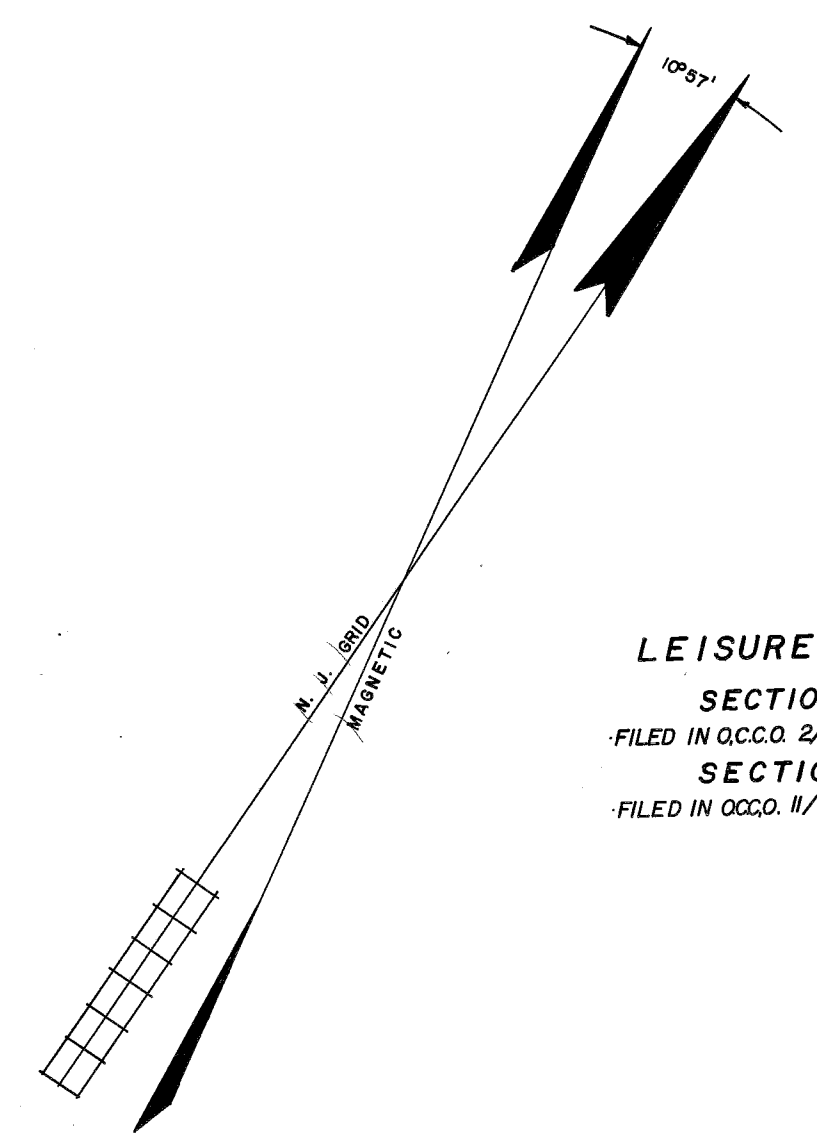


REVISIONS		
DATE	NAME	NO.
NOV., 1987	FELLOWS, READ & ASSOCIATES	
NOV., 1988	FELLOWS, READ & ASSOCIATES	



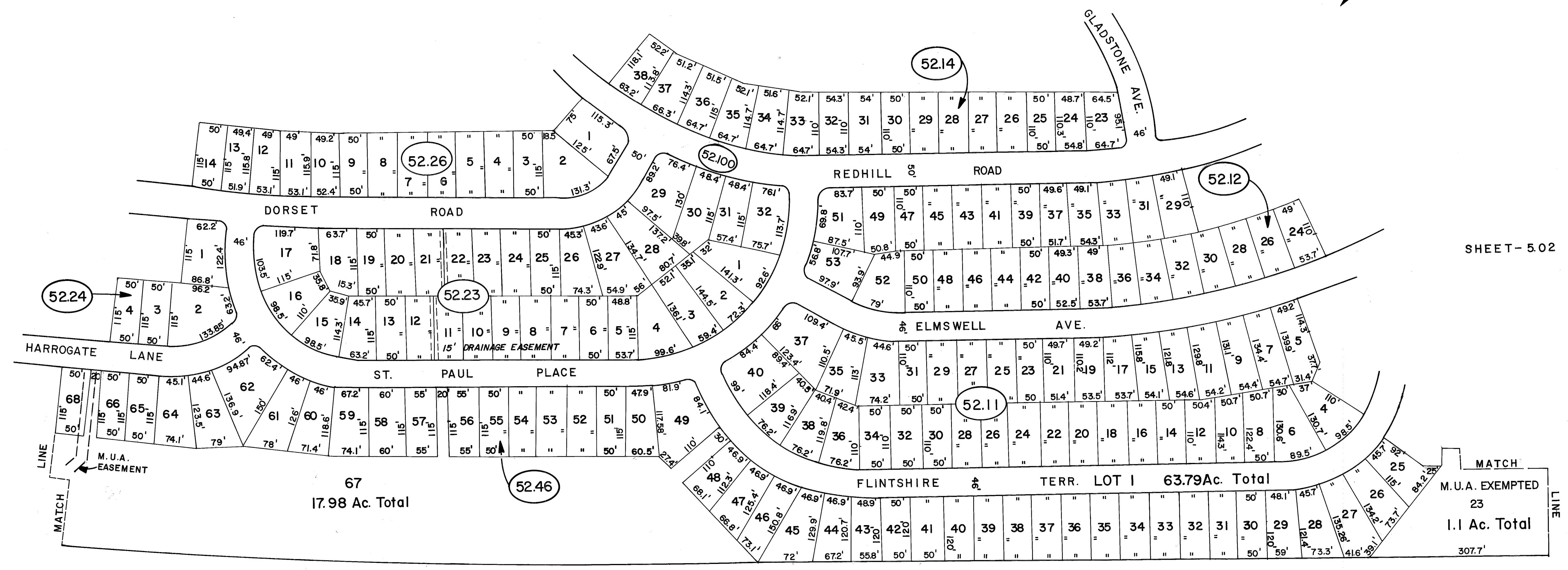
LEISURE KNOLL
SECTION 9
FILED IN OCCO. 2/22/1979 MAP NO. F-871
SECTION 10
FILED IN OCCO. 11/7/1979 MAP NO. E-957

SHEET- 5.04

SHEET- 5.07

SHEET- 5.02

SHEET- 5.01



NEW JERSEY STATE HIGHWAY ROUTE NO. 70

SHEET - 6

NEW JERSEY DEPARTMENT OF THE TREASURY
DIVISION OF TAXATION
LOCAL PROPERTY BRANCH
APPROVED AS A TAX MAP PURSUANT TO THE
PROVISIONS OF CHAPTER 175, LAWS OF 1913, ETC.
FOR THE DIRECTOR, DIVISION OF TAXATION

John C. Fellows Jr.
BY: _____ P.E. & L.S.
LIC. #15434 CHIEF ENGINEERING SECTION
DATE JAN. 23, 1991 SERIAL NO. 3229

TAX MAP
MANCHESTER TOWNSHIP
OCEAN COUNTY NEW JERSEY
JOHN C. FELLOWS JR., P.E. & L.S.
LIC. NO. 10243
CONSULTING ENGINEERS AND LAND SURVEYORS
310 MAIN STREET
TOMS RIVER, NEW JERSEY 08753
NOV., 1986 SCALE 1 INCH = 100 FEET

