

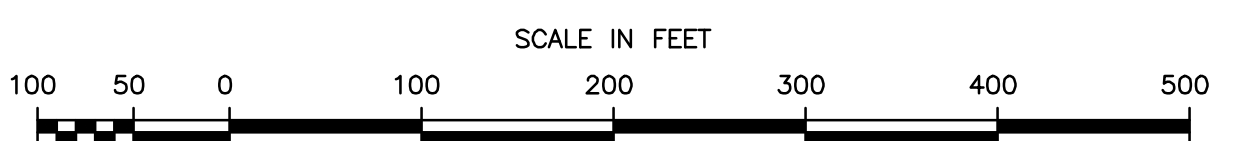
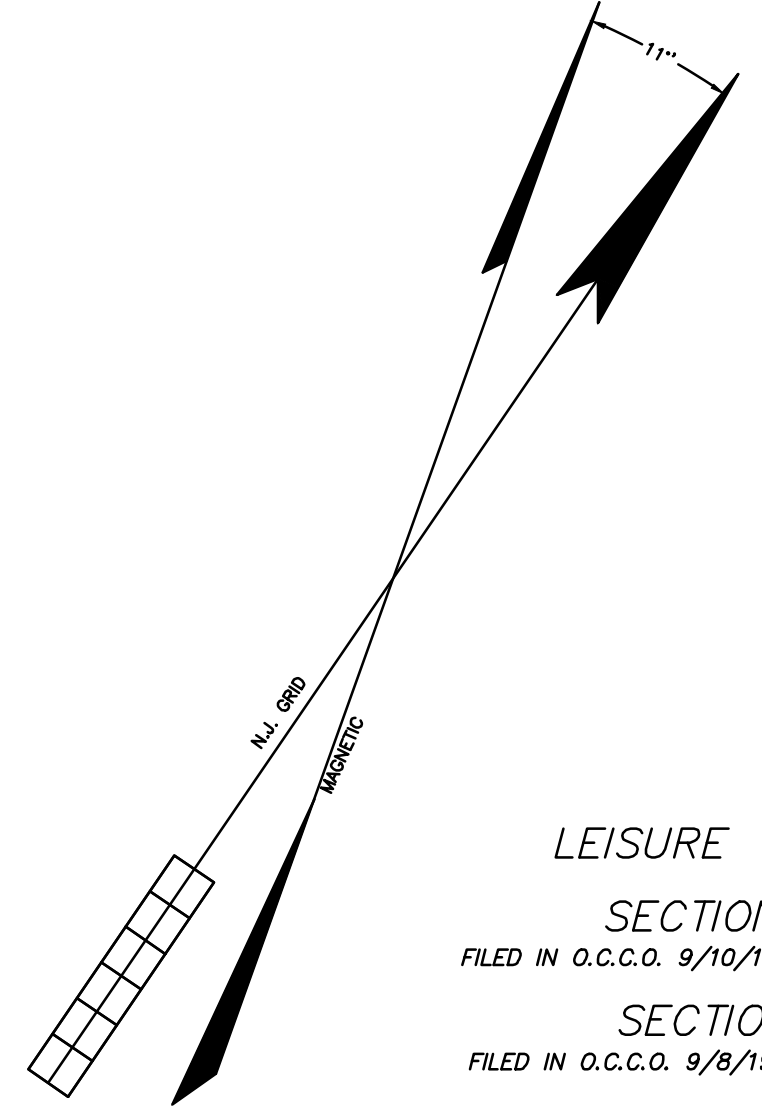
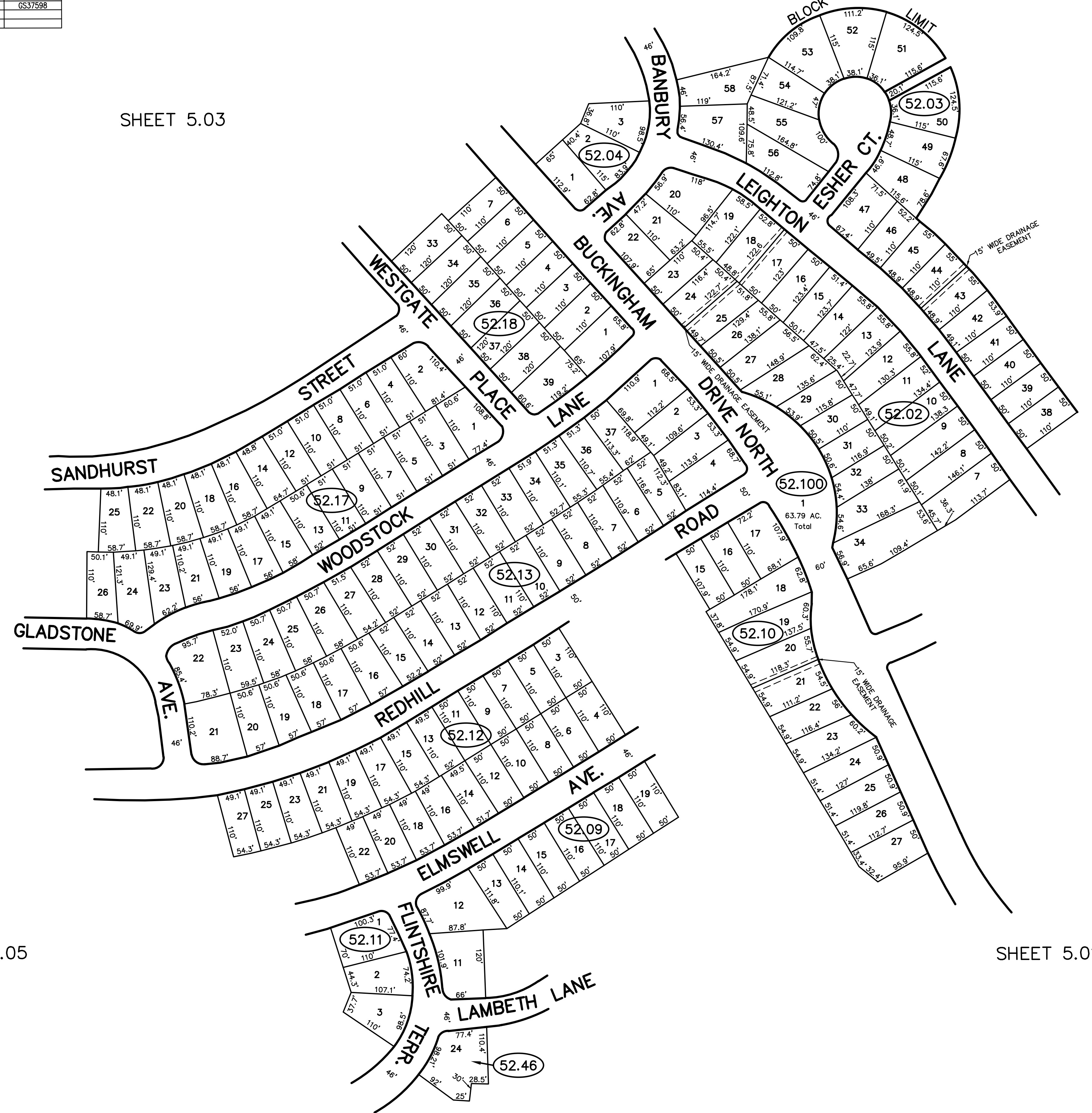
REVISIONS		
DATE	NAME	NO.
NOV., 1987	FELLOWS, READ & ASSOCIATES	
NOV., 1988	FELLOWS, READ & ASSOCIATES	
12-30-18	GLEN LLOYD, P.L.S.	GS37598

SHEET 5.03

SHEET 5.04

SHEET 5.05

SHEET 5.01



THIS MAP HAS BEEN REDRAWN USING COMPUTER AIDED DRAFTING/DESIGN (CAD/D) BASED ON THE MAP PREPARED BY JOHN C. FELLOWS JR. ON NOVEMBER 1986.

THIS SHEET WAS FORMALLY CERTIFIED ON JANUARY 23, 1987, ASSIGNED SERIAL NUMBER 520, SIGNED BY IVAN HAFKOWYCZ P.E. AND L.S.

TAX MAP
MANCHESTER TOWNSHIP
 OCEAN COUNTY NEW JERSEY
 JOHN C. FELLOWS JR., P.E. & L.S.
LIC. NO. 10243
 CONSULTING ENGINEERS AND LAND SURVEYORS
 310 MAIN STREET
 TOMS RIVER, NEW JERSEY 08743
 NOV., 1986 SCALE 1 INCH = 100 FEET