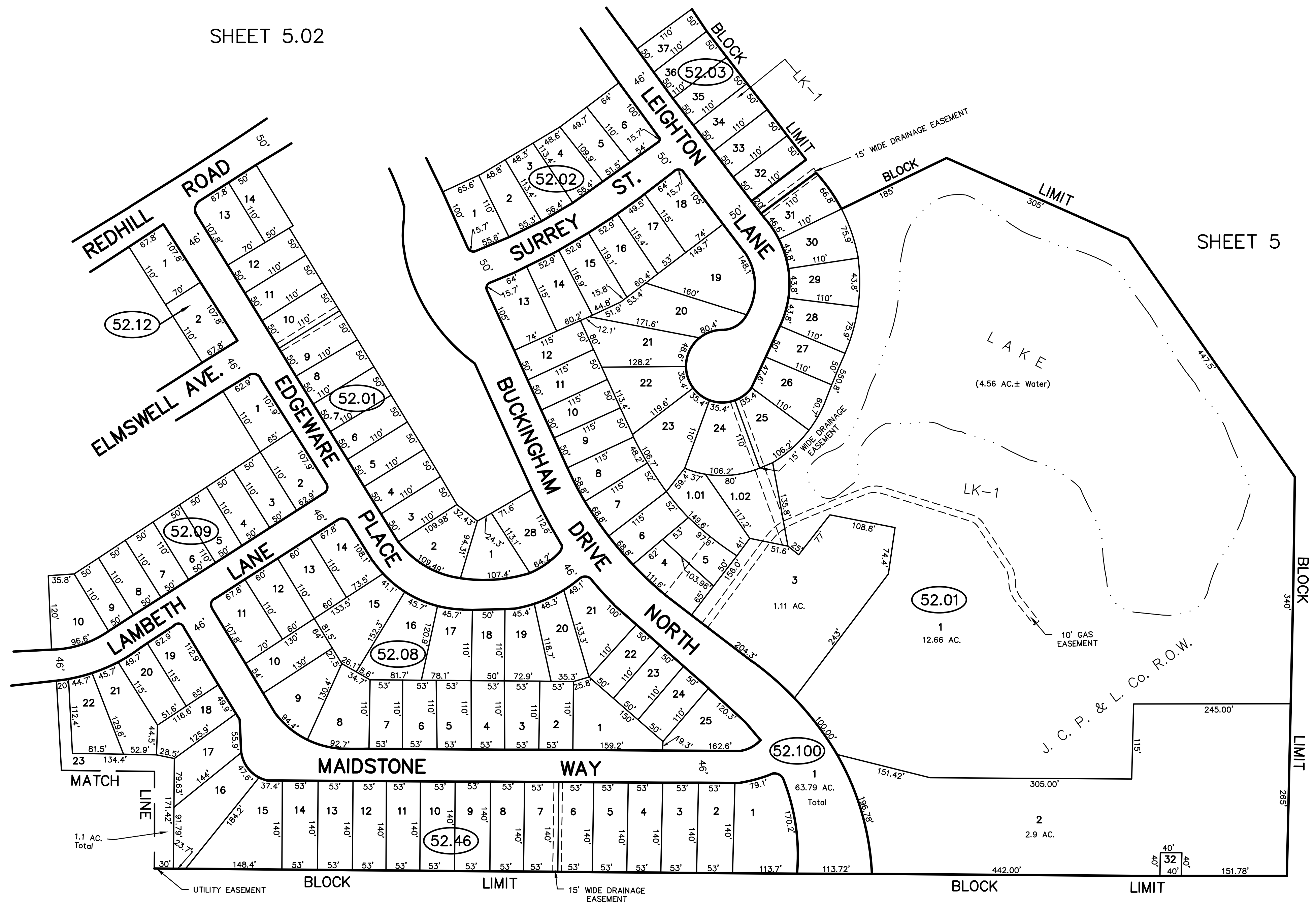


REVISIONS		
DATE	NAME	NO.
NOV., 1987	FELLOWS, READ & ASSOCIATES	
07-31-05	RICHARD A. MORALLE, P.E. & P.L.S.	GB25863
2/1/17	GLEN LLOYD, P.L.S. (MASER)	GS37598
12-30-18	GLEN LLOYD, P.L.S.	GS37598



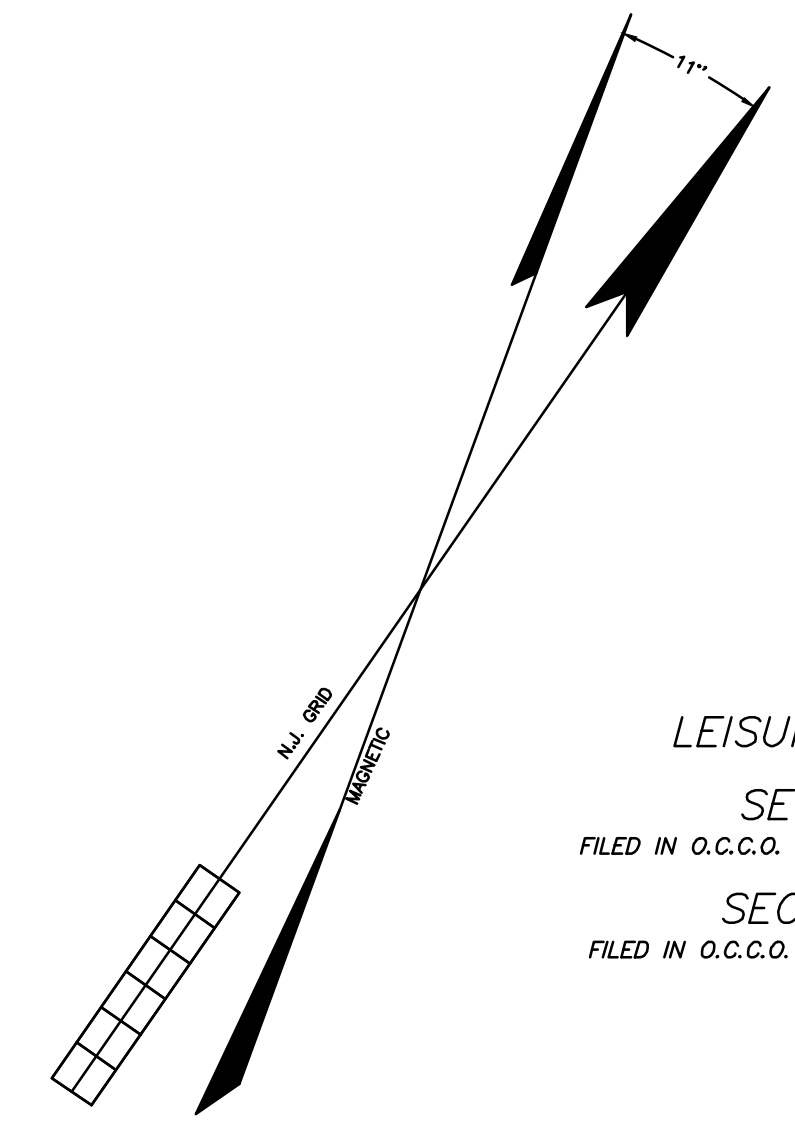
SHEET 5.02

SHEET 5

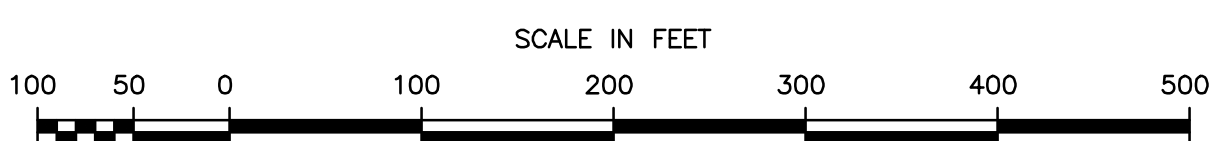
SHEET 5.05

SHEET 6

NEW JERSEY STATE HIGHWAY ROUTE NO. 70



LEISURE KNOLL
SECTION 1
FILED IN O.C.C.O. 9/21/1973 MAP No. 1-260
SECTION 2B
FILED IN O.C.C.O. 11/2/1973 MAP No. 1-359



THIS MAP HAS BEEN REDRAWN USING COMPUTER AIDED DRAFTING/DESIGN (CAD/D) BASED ON THE MAP PREPARED BY JOHN C. FELLOWS JR. ON NOVEMBER 1986.

THIS SHEET WAS FORMALLY CERTIFIED ON JANUARY 23, 1987, ASSIGNED SERIAL NUMBER 520, SIGNED BY IVAN HAFKOWYCZ P.E. AND L.S.

TAX MAP
MANCHESTER TOWNSHIP
OCEAN COUNTY NEW JERSEY
JOHN C. FELLOWS JR., P.E. & L.S.
LIC. NO. 10243
CONSULTING ENGINEERS AND LAND SURVEYORS
310 MAIN STREET
TOMS RIVER, NEW JERSEY 08743
NOV., 1986 SCALE 1 INCH = 100 FEET