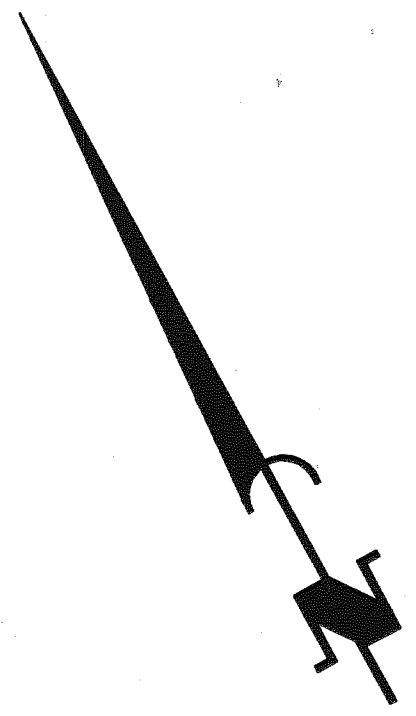


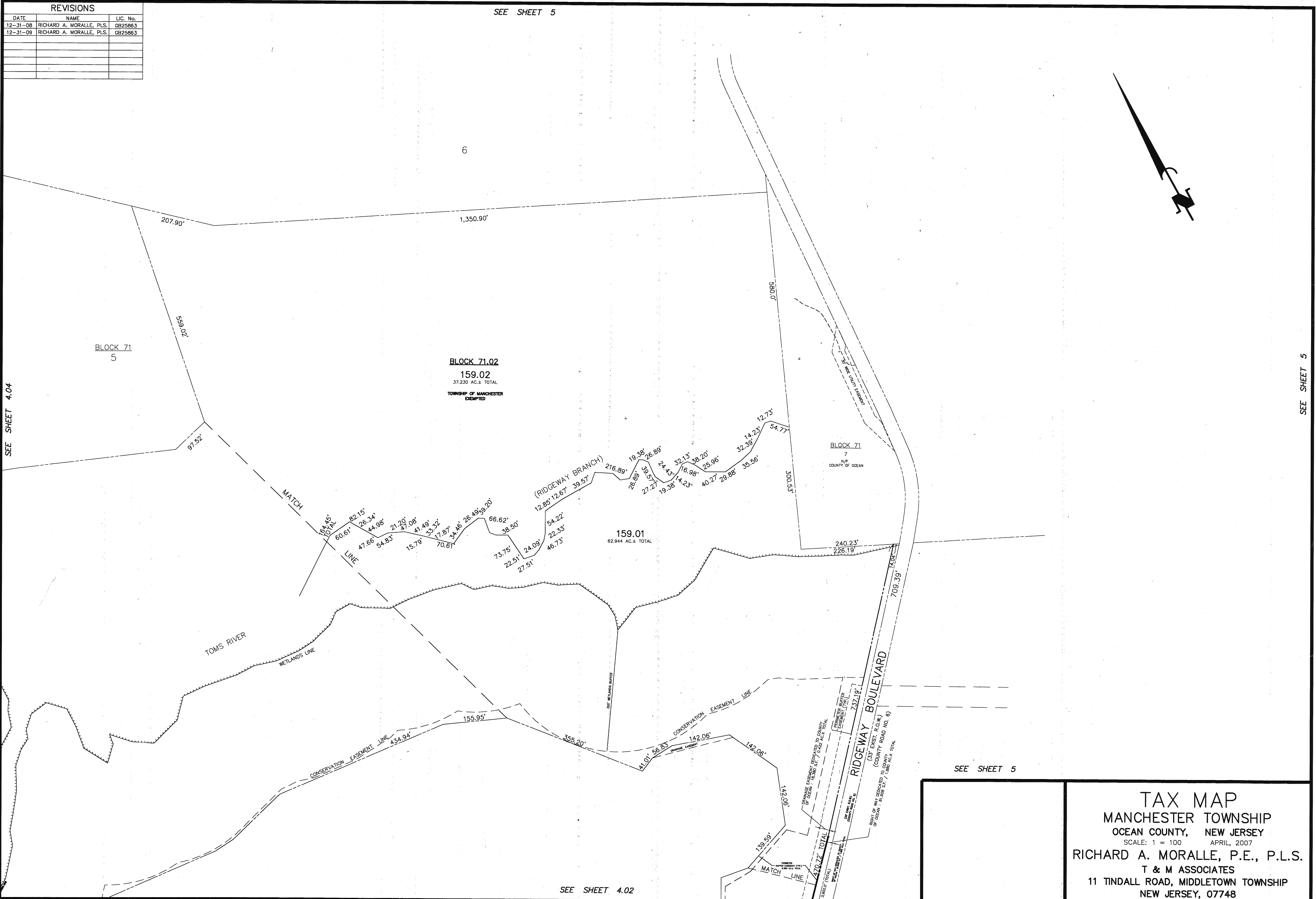
REVISIONS		
DATE	NAME	LIC. No.
12-31-08	RICHARD A. MORALLE, PLS.	GB25863
12-31-09	RICHARD A. MORALLE, PLS.	GB25863

SEE SHEET 5



SEE SHEET 4.04

SEE SHEET 5



SEE SHEET 4.02

SEE SHEET 5

TAX MAP
MANCHESTER TOWNSHIP
 OCEAN COUNTY, NEW JERSEY
 SCALE: 1 = 100 APRIL, 2007
 RICHARD A. MORALLE, P.E., P.L.S.
 T & M ASSOCIATES
 11 TINDALL ROAD, MIDDLETOWN TOWNSHIP
 NEW JERSEY, 07748