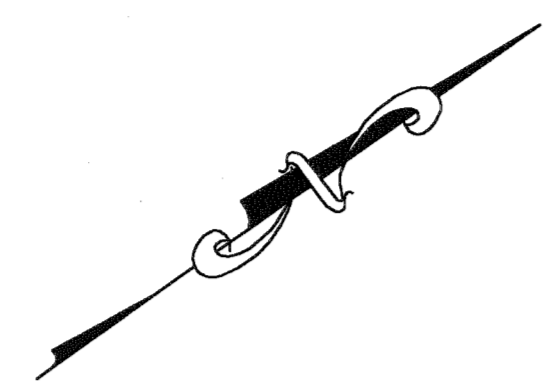


REVISIONS		
DATE	NAME	LIC. No.
12/31/10	RICHARD A. MORALLE, PLS	GB25863

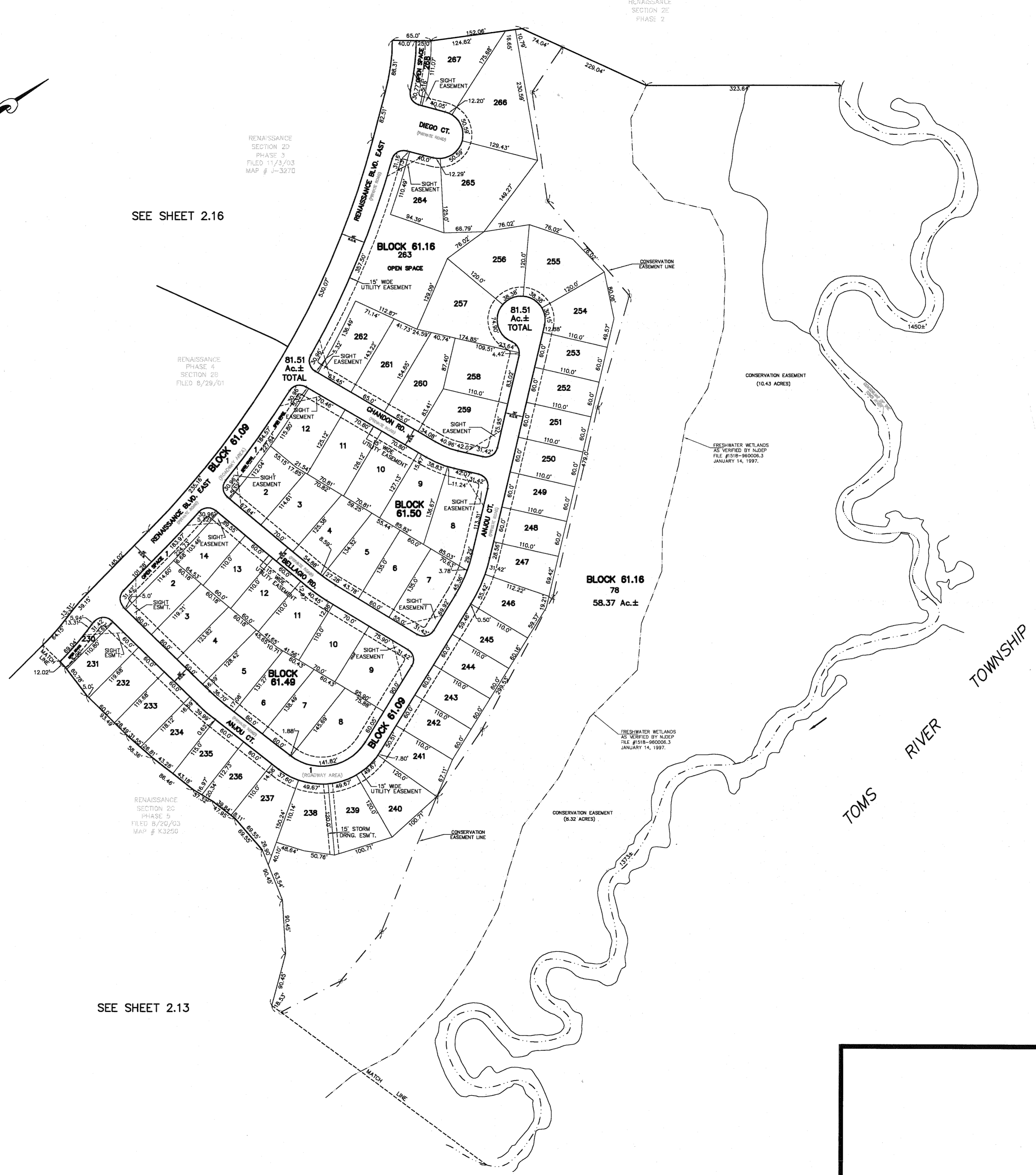
SEE SHEET 2.18



SEE SHEET 2.16

SEE SHEET 2.09

SEE SHEET 2.13



TAX MAP
MANCHESTER TOWNSHIP
 OCEAN COUNTY, NEW JERSEY
 SCALE: 1" = 100' JUNE, 2005
 RICHARD A. MORALLE, P.E., P.L.S.
 T & M ASSOCIATES
 11 TINDALL ROAD, MIDDLETOWN TOWNSHIP
 NEW JERSEY, 07748