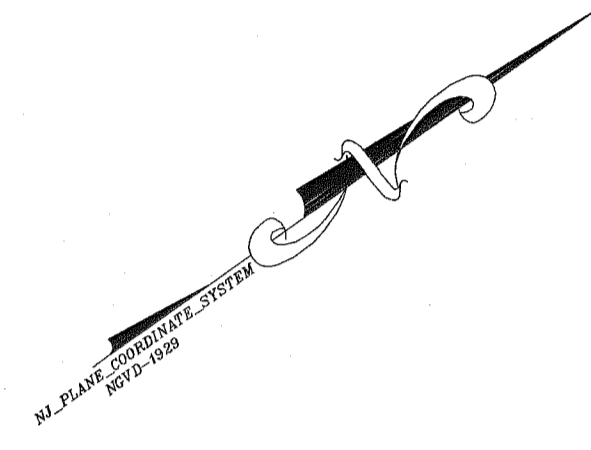
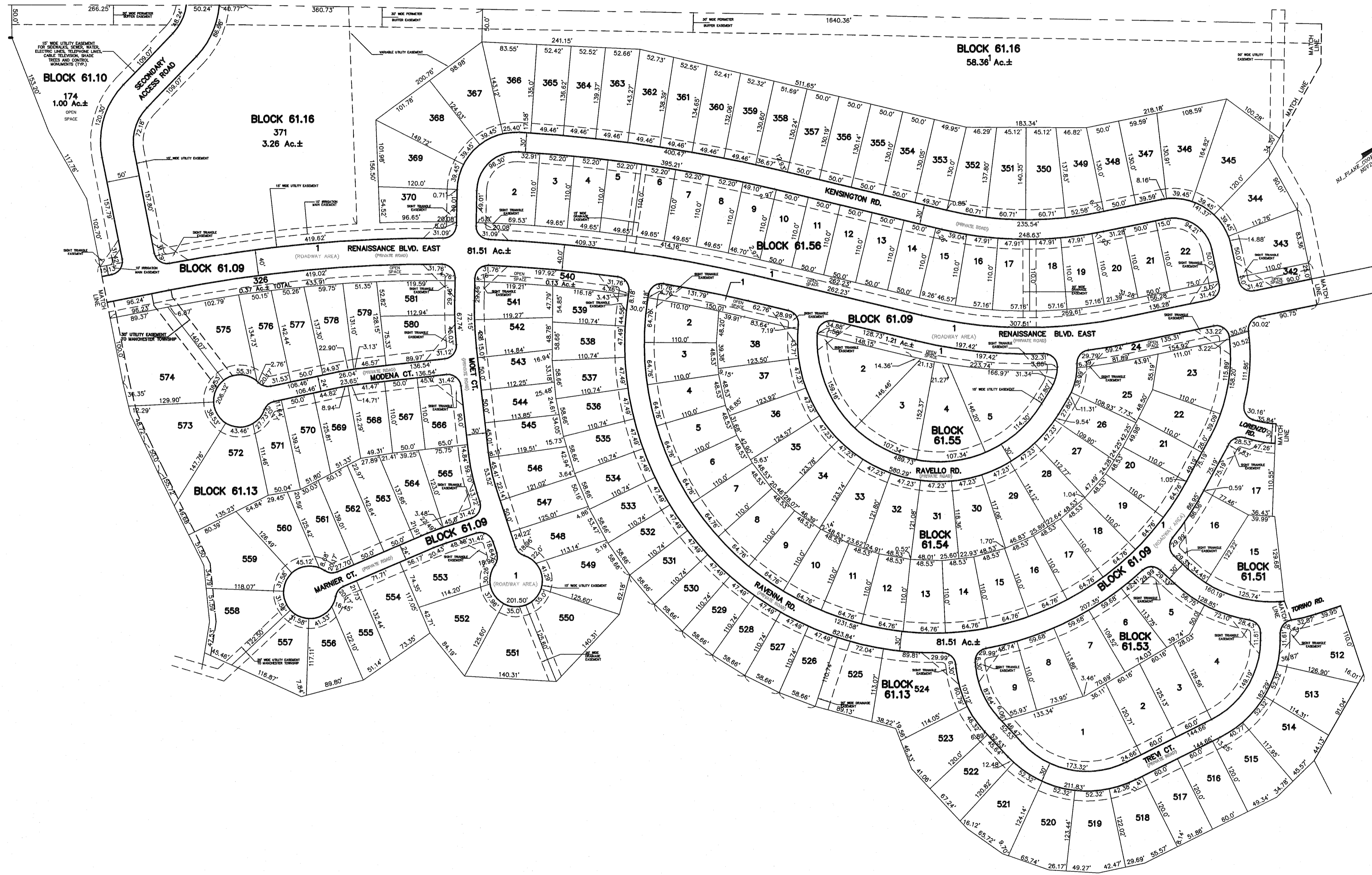


SEE SHEET 2

REVISIONS		
DATE	NAME	LIC. No.
07/31/05	RICHARD A. MORALLE, PLS	GB25863
07/31/05	RICHARD A. MORALLE, PLS	GB25863
07/31/06	RICHARD A. MORALLE, PLS	GB25863
12/31/11	RICHARD A. MORALLE, PLS	GB25863



SEE SHEET 2.09

SEE SHEET 2.18

SEE SHEET 2.16

SEE SHEET 2.16

SEE SHEET 2.08

**TAX MAP**  
**MANCHESTER TOWNSHIP**  
 OCEAN COUNTY, NEW JERSEY  
 SCALE: 1" = 100' DECEMBER, 2004  
 RICHARD A. MORALLE, P.E., P.L.S.  
 T & M ASSOCIATES  
 11 TINDALL ROAD, MIDDLETOWN TOWNSHIP  
 NEW JERSEY, 07748