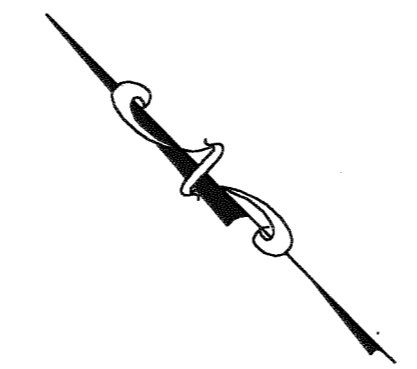


REVISION INFO	
DATE	DESCRIPTION
11/19/02	R.O.W. EASEMENT - BLOCK 58, LOTS 675.09 & 675.10
12/31/03	DRW. REVISION LOT 675.28

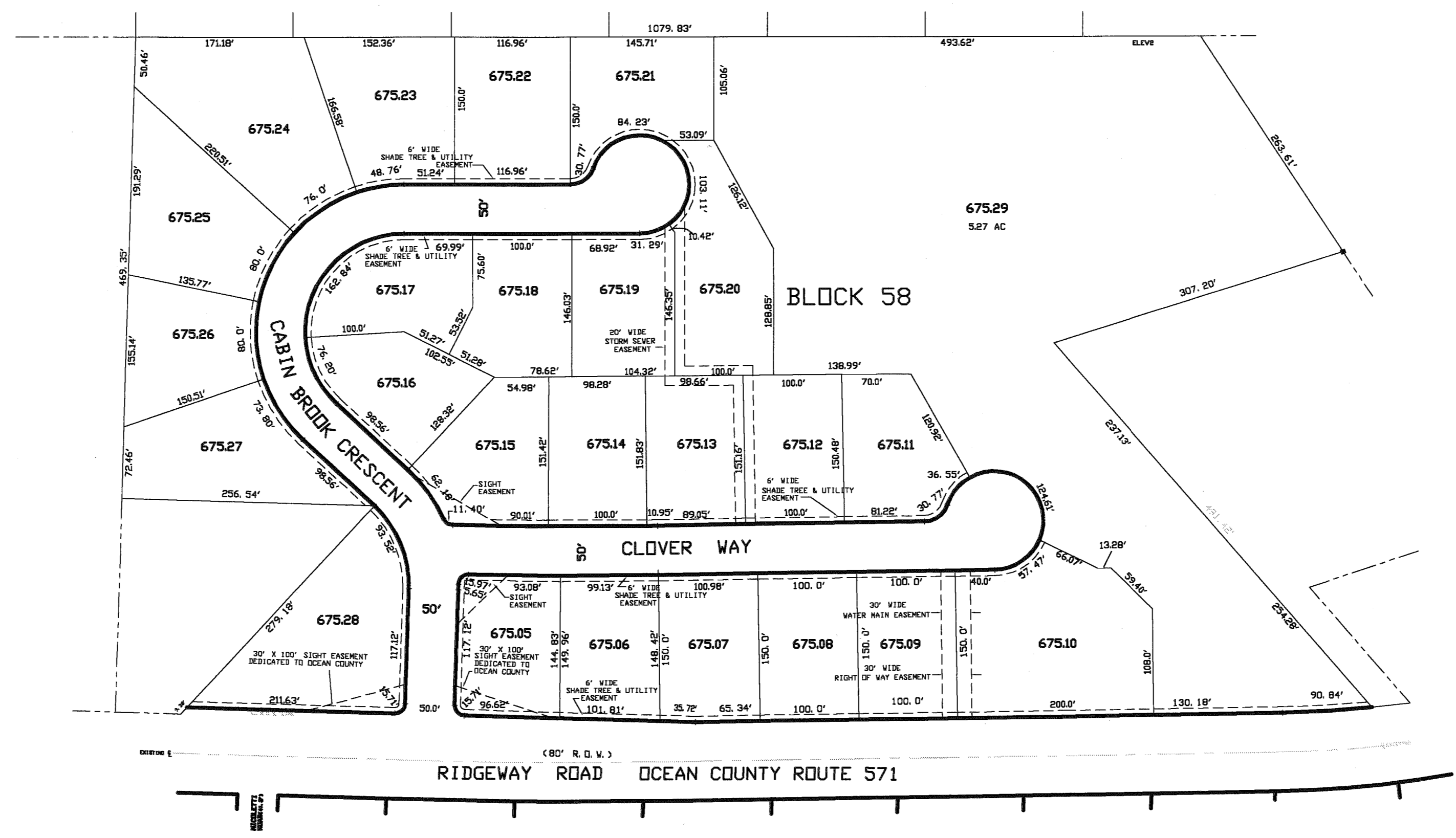
REVISIONS		
DATE	NAME	LIC. No.
11/30/02	RICHARD A. MORALLE, PLS	0B25863
12/31/03	RICHARD A. MORALLE, PLS	0B25863

SEE SHEET 2



SEE SHEET 2

SEE SHEET 2



SEE SHEET 5

TAX MAP
MANCHESTER TOWNSHIP
 OCEAN COUNTY, NEW JERSEY
 SCALE: 1" = 100' SEPTEMBER, 2002
 RICHARD A. MORALLE, P.E., P.L.S.
 T & M ASSOCIATES
 11 TINDALL ROAD, MIDDLETOWN TOWNSHIP
 NEW JERSEY, 07748