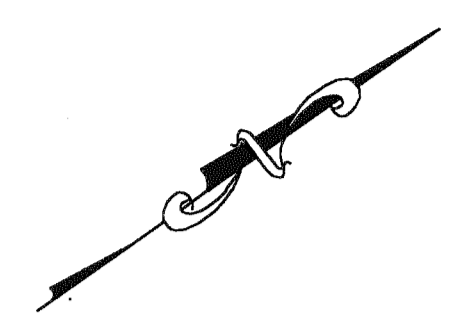


REVISIONS		
DATE	NAME	LIC. No.
11/30/01	RICHARD A. MORALLE, PLS	25863
12/31/03	RICHARD A. MORALLE, PLS	0825863
12/31/04	RICHARD A. MORALLE, PLS	0825863
07/31/06	RICHARD A. MORALLE, PLS	0825863



SEE SHEET 2

SEE SHEET 2.05

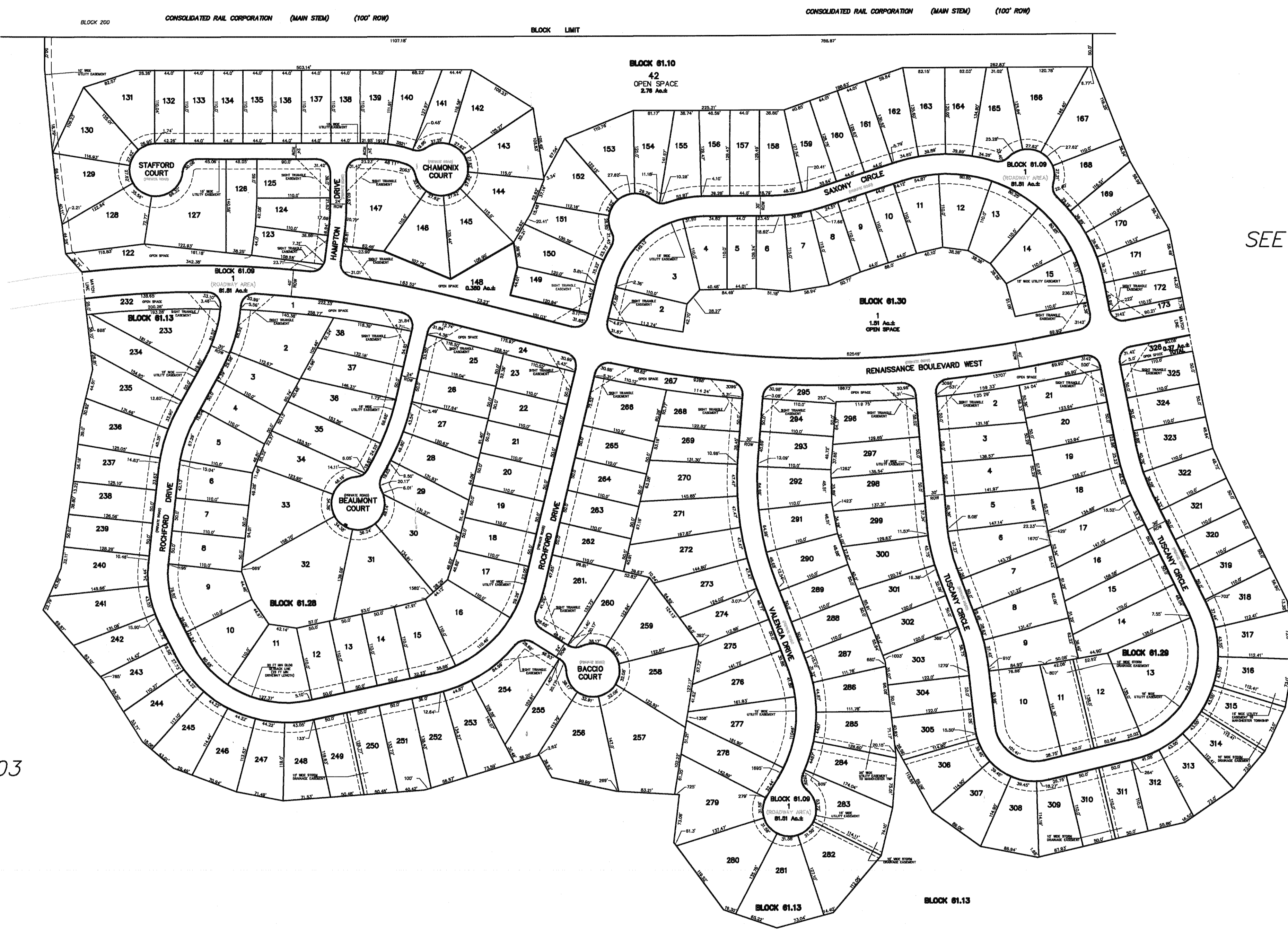
SEE SHEET 2.15

SEE SHEET 2.05

SEE SHEET 2.03

SEE SHEET 2.03

SEE SHEET 2.08



TAX MAP
MANCHESTER TOWNSHIP
OCEAN COUNTY, NEW JERSEY
 SCALE: 1 = 100 DECEMBER, 1998
RICHARD A. SCHULZ, P.E., P.L.S.
 T & M ASSOCIATES
 11 TINDALL ROAD, MIDDLETOWN TOWNSHIP
 NEW JERSEY, 07748