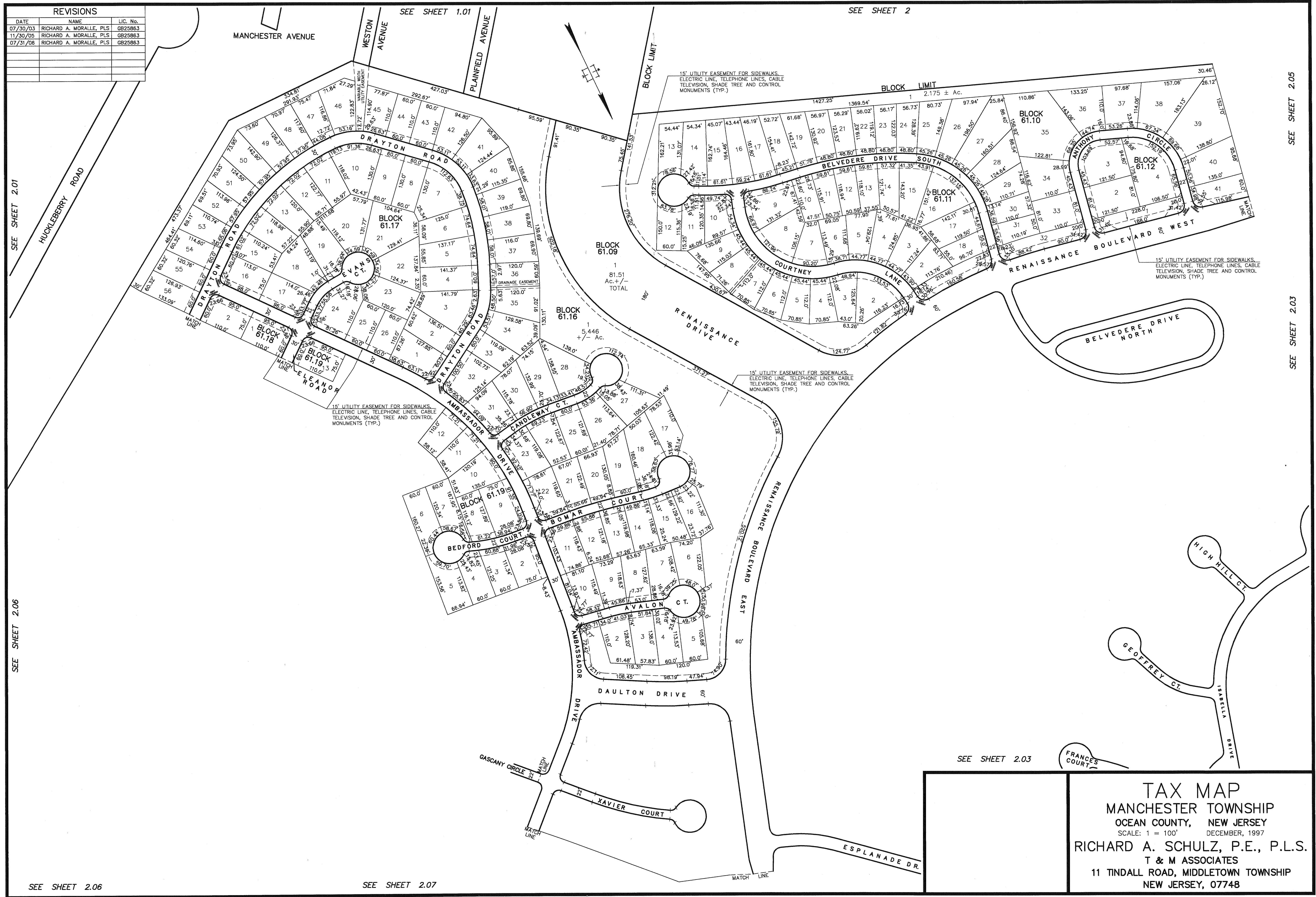


REVISIONS		
DATE	NAME	LIC. No.
07/30/03	RICHARD A. MORALLE, PLS	GB29863
11/30/05	RICHARD A. MORALLE, PLS	GB29863
07/31/06	RICHARD A. MORALLE, PLS	GB29863



SEE SHEET 2.01

SEE SHEET 2.06

SEE SHEET 1.01

SEE SHEET 2

SEE SHEET 2.05

SEE SHEET 2.03

SEE SHEET 2.03

TAX MAP
MANCHESTER TOWNSHIP
 OCEAN COUNTY, NEW JERSEY
 SCALE: 1 = 100' DECEMBER, 1997
 RICHARD A. SCHULZ, P.E., P.L.S.
 T & M ASSOCIATES
 11 TINDALL ROAD, MIDDLETOWN TOWNSHIP
 NEW JERSEY, 07748

SEE SHEET 2.06

SEE SHEET 2.07