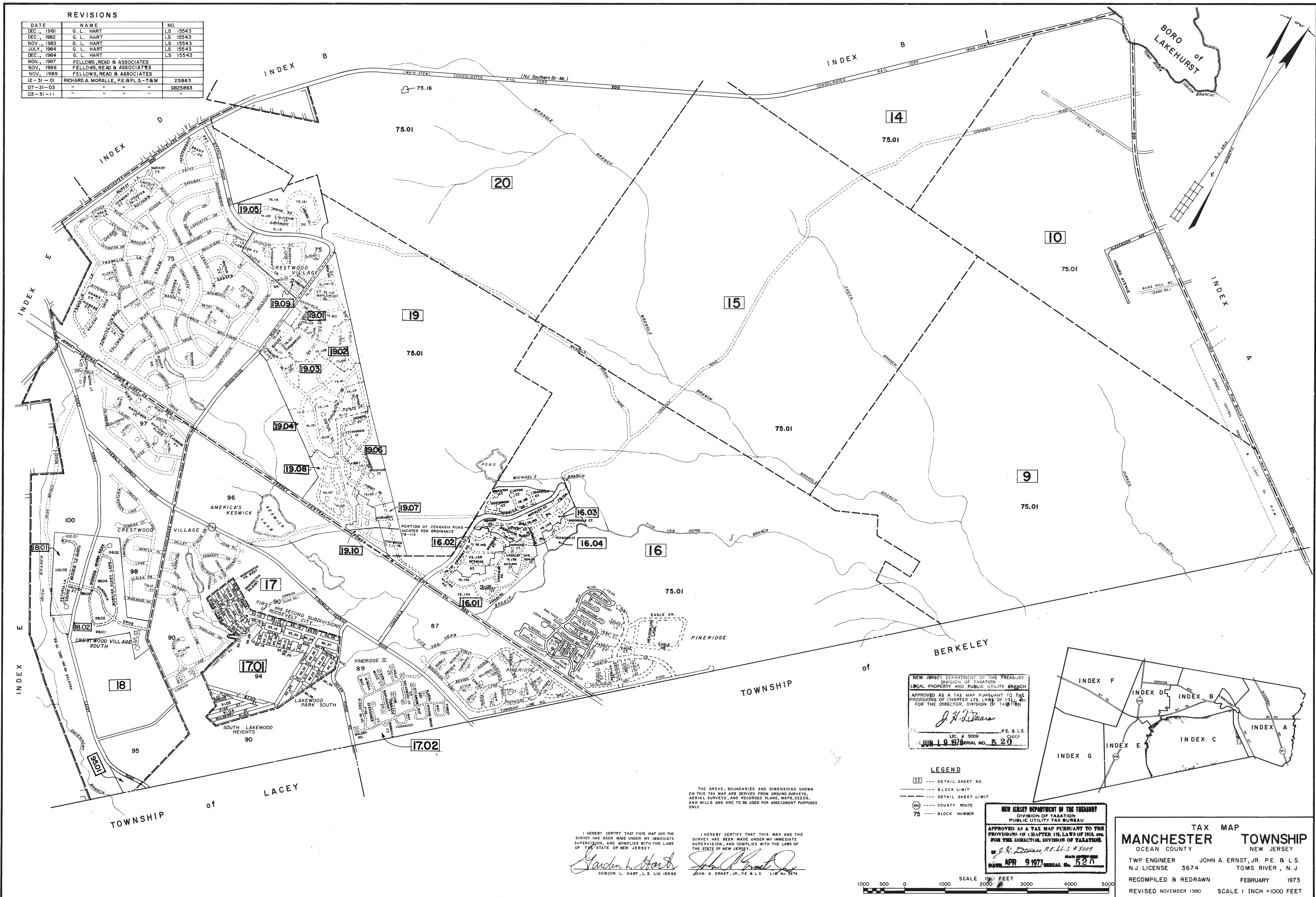


REVISIONS		
DATE	NAME	NO.
DEC., 1981	G. L. HART	LS 15543
DEC., 1982	G. L. HART	LS 15543
NOV., 1983	G. L. HART	LS 15543
JULY, 1984	G. L. HART	LS 15543
DEC., 1984	G. L. HART	LS 15543
NOV., 1987	FELLOWS, READ & ASSOCIATES	
NOV., 1988	FELLOWS, READ & ASSOCIATES	
NOV., 1989	FELLOWS, READ & ASSOCIATES	
12-31-01	RICHARD A. MORALLE, P.E. & P.L.S.-T&M	25863
07-31-03	" " " "	6825863
03-31-11	" " " "	" "



NEW JERSEY DEPARTMENT OF THE TREASURY  
 DIVISION OF TAXATION  
 LOCAL PROPERTY AND PUBLIC UTILITY BRANCH  
 APPROVED AS A TAX MAP PURSUANT TO THE  
 PROVISIONS OF CHAPTER 175, LAWS OF 1913, ETC.  
 FOR THE DIRECTOR, DIVISION OF TAXATION  
*J. N. Deans*  
 P.E. & L.S.  
 LIC. # 5009  
 CHIEF  
 JUN 19 1973 SERIAL NO. 520

**LEGEND**  
 --- DETAIL SHEET NO.  
 --- BLOCK LIMIT  
 --- DETAIL SHEET LIMIT  
 --- COUNTY ROUTE  
 --- BLOCK NUMBER

NEW JERSEY DEPARTMENT OF THE TREASURY  
 DIVISION OF TAXATION  
 PUBLIC UTILITY TAX BUREAU  
 APPROVED AS A TAX MAP PURSUANT TO THE  
 PROVISIONS OF CHAPTER 175, LAWS OF 1913, ETC.  
 FOR THE DIRECTOR, DIVISION OF TAXATION  
*J. R. Deans*, P.E. & L.S. # 5009  
 APR 9 1973 SERIAL NO. 520

**TAX MAP**  
**MANCHESTER TOWNSHIP**  
 OCEAN COUNTY NEW JERSEY  
 TWP ENGINEER JOHN A. ERNST, JR. P.E. & L.S.  
 N.J. LICENSE 3674 TOMS RIVER, N.J.  
 RECOMPIL & REDRAWN FEBRUARY 1973  
 REVISED NOVEMBER 1980 SCALE 1 INCH = 1000 FEET

I HEREBY CERTIFY THAT THIS MAP AND THE SURVEY HAS BEEN MADE UNDER MY IMMEDIATE SUPERVISION, AND COMPLIES WITH THE LAWS OF THE STATE OF NEW JERSEY.  
*Gordon L. Hart*  
 GORDON L. HART, L.S. LIC. 15543

I HEREBY CERTIFY THAT THIS MAP AND THE SURVEY HAS BEEN MADE UNDER MY IMMEDIATE SUPERVISION, AND COMPLIES WITH THE LAWS OF THE STATE OF NEW JERSEY.  
*John A. Ernst, Jr.*  
 JOHN A. ERNST, JR., P.E. & L.S. LIC. NO. 3674

