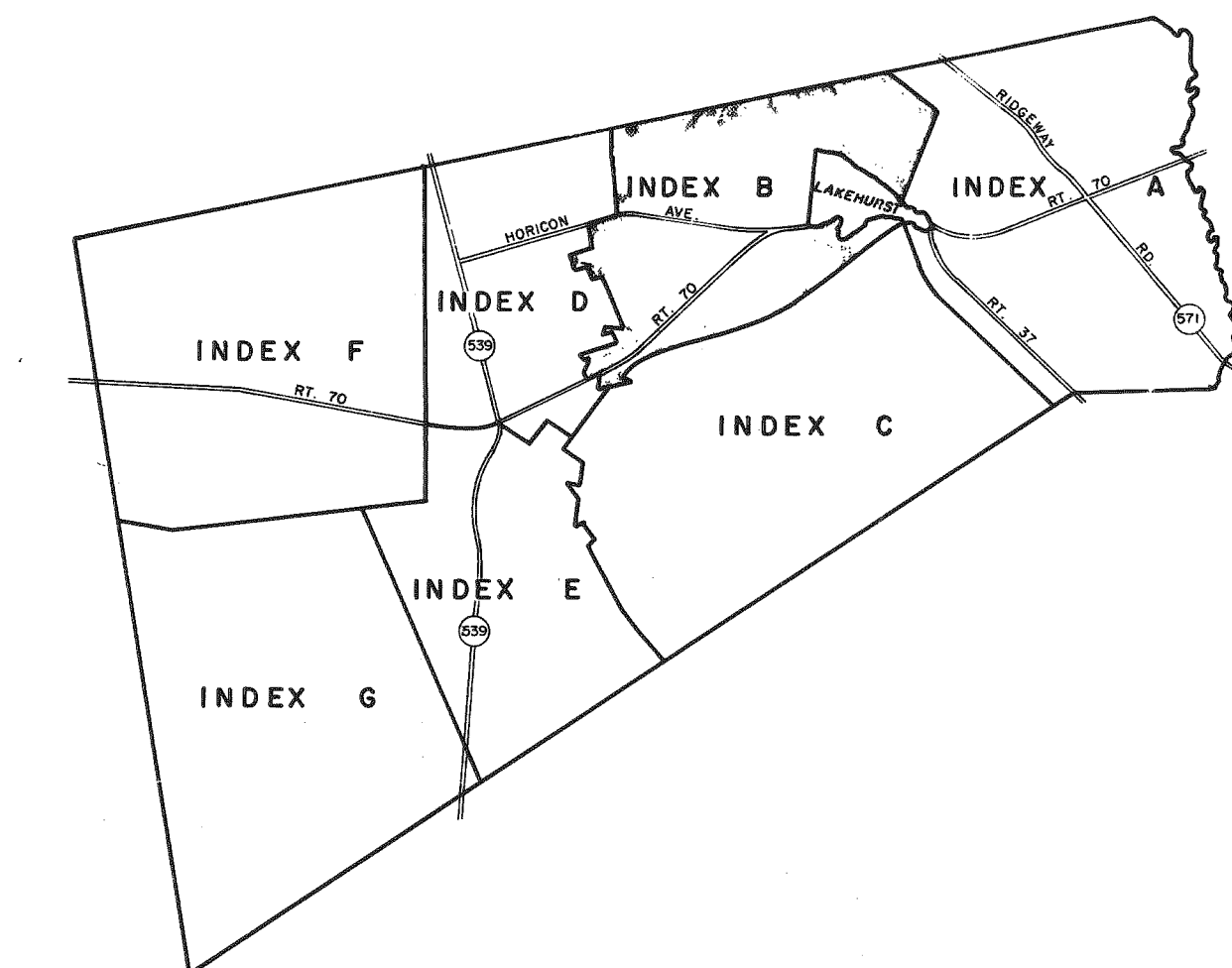
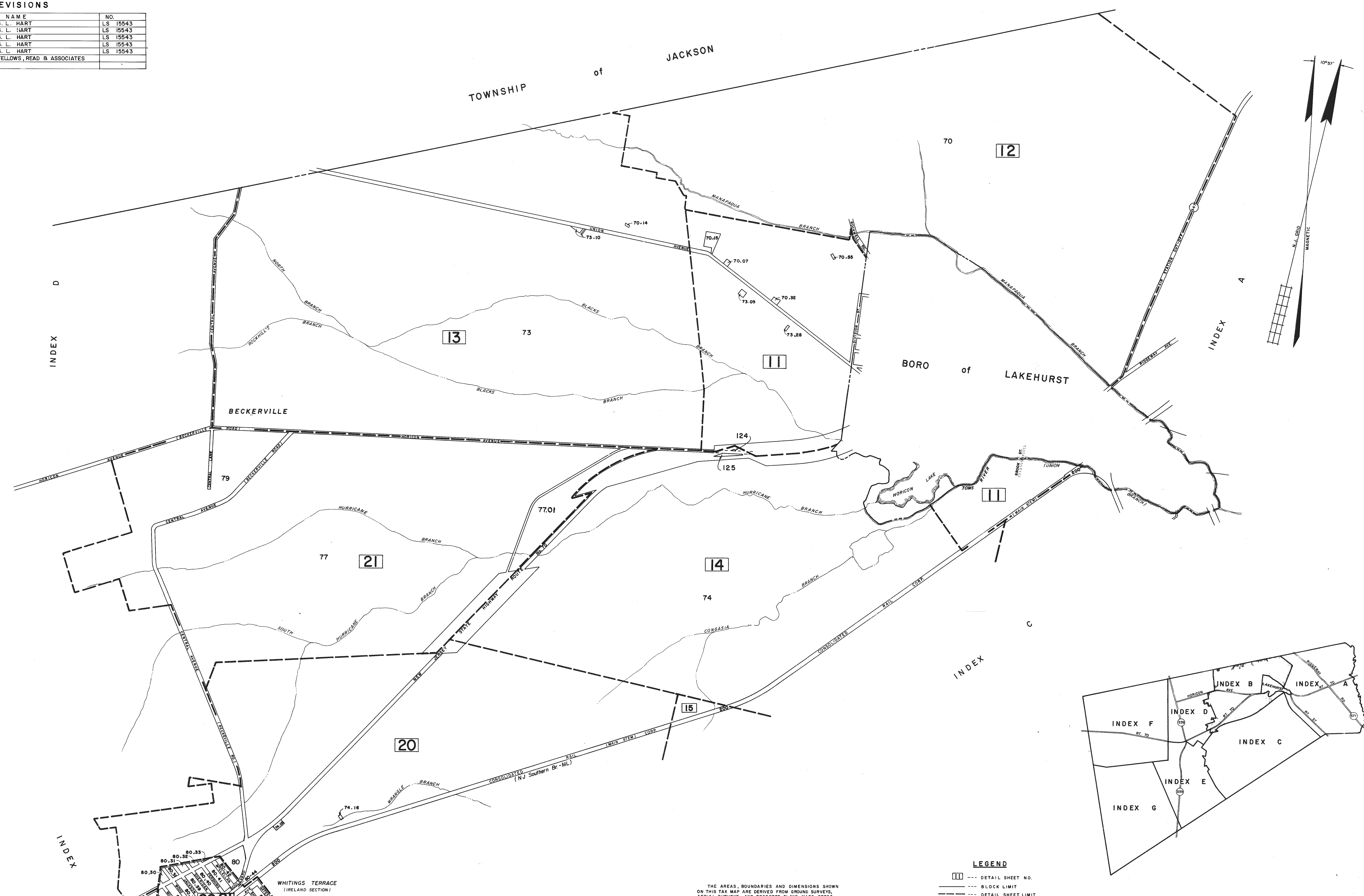


REVISIONS		
DATE	NAME	NO.
DEC., 1981	G. L. HART	LS 15543
DEC., 1982	G. L. HART	LS 15543
NOV., 1983	G. L. HART	LS 15543
JULY, 1984	G. L. HART	LS 15543
DEC., 1984	G. L. HART	LS 15543
MAR., 1986	FELLOWS, READ & ASSOCIATES	



THE AREAS, BOUNDARIES AND DIMENSIONS SHOWN ON THIS TAX MAP ARE DERIVED FROM GROUND SURVEYS, AERIAL SURVEYS, AND RECORDED PLANS, MAPS, DEEDS, AND WILLS AND ARE TO BE USED FOR ASSESSMENT PURPOSES ONLY.

I HEREBY CERTIFY THAT THIS MAP AND THE SURVEY HAS BEEN MADE UNDER MY IMMEDIATE SUPERVISION, AND COMPLIES WITH THE LAWS OF THE STATE OF NEW JERSEY.

Gordon L. Hart
GORDON L. HART, L.S. LIC. 15843

I HEREBY CERTIFY THAT THIS MAP AND THE SURVEY HAS BEEN MADE UNDER MY IMMEDIATE SUPERVISION, AND COMPLIES WITH THE LAWS OF THE STATE OF NEW JERSEY.

John A. Ernst, Jr.
JOHN A. ERNST, JR., P.E. & L.S. LIC. NO. 3674

- LEGEND**
- III --- DETAIL SHEET NO.
 - BLOCK LIMIT
 - DETAIL SHEET LIMIT
 - COUNTY ROUTE
 - 75 --- BLOCK NUMBER

NEW JERSEY DEPARTMENT OF THE TREASURY
DIVISION OF TAXATION
PUBLIC UTILITY TAX BUREAU

APPROVED AS A TAX MAP PURSUANT TO THE PROVISIONS OF CHAPTER 176, LAWS OF 1913, ETC. FOR THE DIRECTOR, DIVISION OF TAXATION.

J. H. Detwiler, P.E. & L.S. #5009
DATE: APR 9 1973 SERIAL No. 520

TAX MAP
MANCHESTER TOWNSHIP
OCEAN COUNTY NEW JERSEY

TWP ENGINEER JOHN A. ERNST, JR. P.E. & L.S.
N.J. LICENSE 3674 TOMS RIVER, N.J.

RECOMPILED & REDRAWN FEBRUARY 1973
REVISED NOVEMBER 1980 SCALE 1 INCH = 1000 FEET

